

Master Value LEDtube T8

MASTER LEDtube VLE 1200mm HO 14W 840 T8

A high-performance LED solution, the professional Master Value LED tube is ideal for replacing T8 fluorescent lamps using EM ballast or installing directly on the mains. This product provides a uniform lighting effect for use in all general lighting, as well as instant energy-efficiency, making for an environmentally friendly solution.

Product data

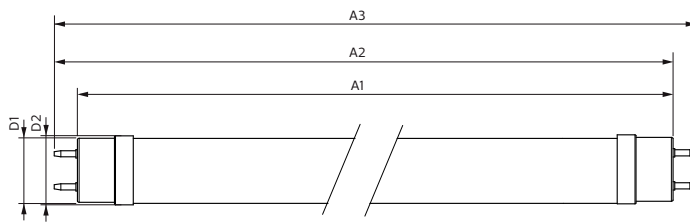
General Information		Lamp current (max.)	
Cap base	G13 [Medium Bi-Pin Fluorescent]		66 mA
EU RoHS compliant	Yes	Lamp current (min.)	60 mA
Nominal lifetime (nom.)	50000 h	Starting time (nom.)	0.5 s
Switching cycle	200,000X	Warm-up time to 60% light (nom.)	0.5 s
		Power factor (nom.)	0.9
		Voltage (Nom)	220-240 V
Light Technical		Temperature	
Colour Code	841 [CCT of 4100K (841)]	T-ambient (max.)	45 °C
Beam Angle (Nom)	240 °	T-ambient (min.)	-20 °C
Luminous flux (nom.)	2100 lm	T storage (max.)	65 °C
Colour designation	Cool White (CW)	T storage (min.)	-40 °C
Correlated Colour Temperature (Nom)	4000 K	T-Case maximum (nom.)	55 °C
Luminous efficacy (rated) (nom.)	150.00 lm/W		
Colour consistency	<6	Controls and Dimming	
Colour rendering index (nom.)	83	Dimmable	No
LLMF at end of nominal lifetime (nom.)	70 %	Mechanical and Housing	
Operating and Electrical		Bulb material	Glass
Input frequency	50 to 60 Hz		
Power (Rated) (Nom)	14 W		

Master Value LEDtube T8

Product length	1200 mm
Approval and Application	
Energy efficiency label (EEL)	A++
Energy-saving product	Yes
Approval marks	RoHS compliance CE marking KEMA Keur certificate
Energy consumption kWh/1,000 hours	14 kWh
Product Data	
Full product code	871869964687500

Order product name	MASTER LEDtube VLE 1200mm HO 14W 840 T8
EAN/UPC – product	8718699646875
Order code	64687500
SAP numerator – quantity per pack	1
Numerator – packs per outer box	10
SAP material	929002021502
SAP net weight (piece)	0.215 kg

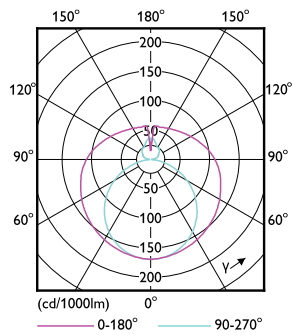
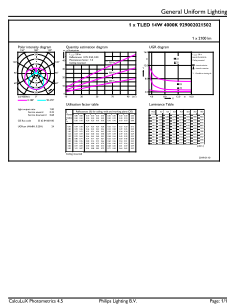
Dimensional drawing



Product	D1	D2	A1	A2	A3
MASTER LEDtube VLE 1200mm HO 14W 840 T8	25.8 mm	28 mm	1198.2 mm	1205.3 mm	1212.4 mm

TLED 4ft 220-240V 14-36W2100lm 4000K G13

Photometric data



LEDtube 220-240V G13 4ft 2100lm 4000k

LEDtube 220-240V G13

Master Value LEDtube T8

Photometric data



LEDtube 220-240V G13 4000k

Lifetime



LEDtube 220-240V G13 LumenVsTc



LEDtube 220-240V G13



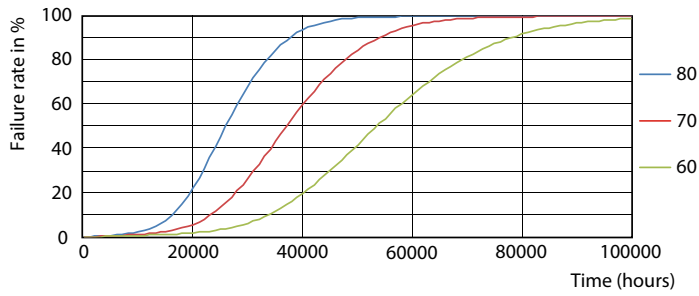
LEDtube 220-240V G13



LEDtube 220-240V G13 LifetimeVsTc

Master Value LEDtube T8

Lifetime



LEDtube 220-240V G13 FailureRate

