



Master Value LEDtube T8

MASTER LEDtube VLE 1200mm HO 14W 830 T8

A high-performance LED solution, the professional Master Value LED tube is ideal for replacing T8 fluorescent lamps using EM ballast or installing directly on the mains. This product provides a uniform lighting effect for use in all general lighting, as well as instant energy-efficiency, making for an environmentally friendly solution.

Product data

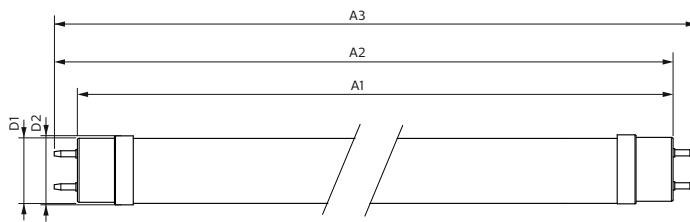
General Information		Lamp current (max.)	
Cap base	G13 [Medium Bi-Pin Fluorescent]	Lamp current (min.)	66 mA
EU RoHS compliant	Yes	Starting time (nom.)	60 mA
Nominal lifetime (nom.)	50000 h	Warm-up time to 60% light (nom.)	0.5 s
Switching cycle	200,000X	Power factor (nom.)	0.9
		Voltage (Nom)	220-240 V
Light Technical		Temperature	
Colour Code	830 [CCT of 3,000 K]	T-ambient (max.)	45 °C
Beam Angle (Nom)	240 °	T-ambient (min.)	-20 °C
Luminous flux (nom.)	2000 lm	T storage (max.)	65 °C
Colour designation	White (WH)	T storage (min.)	-40 °C
Correlated Colour Temperature (Nom)	3000 K	T-Case maximum (nom.)	55 °C
Luminous efficacy (rated) (nom.)	142.00 lm/W		
Colour consistency	<6	Controls and Dimming	
Colour rendering index (nom.)	83	Dimmable	No
LLMF at end of nominal lifetime (nom.)	70 %		
Operating and Electrical		Mechanical and Housing	
Input frequency	50 to 60 Hz	Bulb material	Glass
Power (Rated) (Nom)	14 W		

Master Value LEDtube T8

Product length	1200 mm
Approval and Application	
Energy efficiency label (EEL)	A++
Energy-saving product	Yes
Approval marks	RoHS compliance CE marking KEMA Keur certificate
Energy consumption kWh/1,000 hours	14 kWh
Product Data	
Full product code	871869964685100

Order product name	MASTER LEDtube VLE 1200mm HO 14W 830 T8
EAN/UPC – product	8718699646851
Order code	64685100
SAP numerator – quantity per pack	1
Numerator – packs per outer box	10
SAP material	929002021402
SAP net weight (piece)	0.215 kg

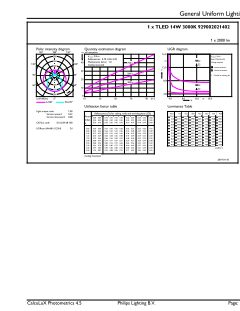
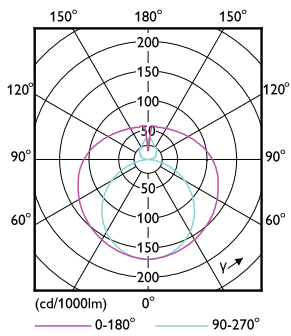
Dimensional drawing



Product	D1	D2	A1	A2	A3
MASTER LEDtube VLE 1200mm HO 14W 830 T8	25.8 mm	28 mm	1198.2 mm	1205.3 mm	1212.4 mm

TLED 4ft 220-240V 14-36W2000lm 3000K G13

Photometric data



LEDtube 220-240V G13

LEDtube 220-240V G13 4ft 2000lm 3000k

Master Value LEDtube T8

Photometric data



LEDtube 220-240V G13 3000k

Lifetime



LEDtube 220-240V G13 LumenVsTc



LEDtube 220-240V G13



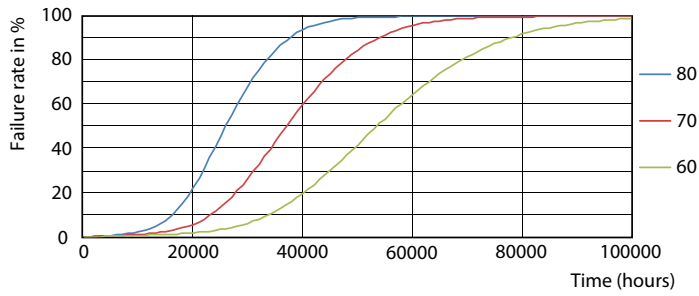
LEDtube 220-240V G13



LEDtube 220-240V G13 LifetimeVsTc

Master Value LEDtube T8

Lifetime



LEDtube 220-240V G13 FailureRate

