

Master Value LEDtube T8

MASTER LEDtube VLE 600mm HO 8W 840 T8

A high-performance LED solution, the professional Master Value LED tube is ideal for replacing T8 fluorescent lamps using EM ballast or installing directly on the mains. This product provides a uniform lighting effect for use in all general lighting, as well as instant energy-efficiency, making for an environmentally friendly solution.

Product data

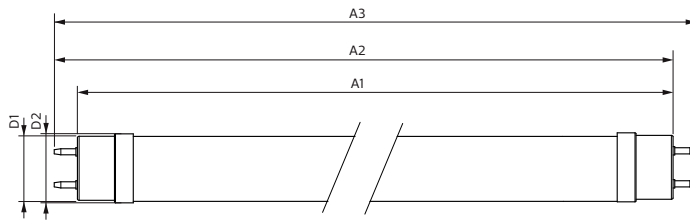
General Information		Lamp current (max.)		38 mA	
Cap base	G13 [Medium Bi-Pin Fluorescent]	Lamp current (min.)	34 mA		
EU RoHS compliant	Yes	Starting time (nom.)	0.5 s		
Nominal lifetime (nom.)	50000 h	Warm-up time to 60% light (nom.)	0.5 s		
Switching cycle	200,000X	Power factor (nom.)	0.9		
		Voltage (Nom)	220-240 V		
Light Technical		Temperature			
Colour Code	841 [CCT of 4100K (841)]	T-ambient (max.)	45 °C		
Beam Angle (Nom)	240 °	T-ambient (min.)	-20 °C		
Luminous flux (nom.)	1050 lm	T storage (max.)	65 °C		
Colour designation	Cool White (CW)	T storage (min.)	-40 °C		
Correlated Colour Temperature (Nom)	4000 K	T-Case maximum (nom.)	50 °C		
Luminous efficacy (rated) (nom.)	131.00 lm/W	Controls and Dimming			
Colour consistency	<6	Dimmable	No		
Colour rendering index (nom.)	83	Mechanical and Housing			
LLMF at end of nominal lifetime (nom.)	70 %	Bulb material	Glass		
Operating and Electrical					
Input frequency	50 to 60 Hz				
Power (Rated) (Nom)	8 W				

Master Value LEDtube T8

Product length	600 mm
Approval and Application	
Energy efficiency label (EEL)	A++
Energy-saving product	Yes
Approval marks	RoHS compliance CE marking KEMA Keur certificate
Energy consumption kWh/1,000 hours	8 kWh
Product Data	
Full product code	871869964681300

Order product name	MASTER LEDtube VLE 600mm HO 8W 840 T8
EAN/UPC – product	8718699646813
Order code	64681300
SAP numerator – quantity per pack	1
Numerator – packs per outer box	10
SAP material	929002021202
SAP net weight (piece)	0.120 kg

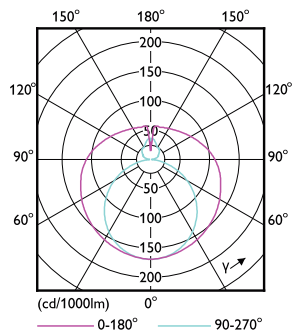
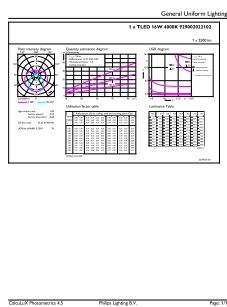
Dimensional drawing



Product	D1	D2	A1	A2	A3
MASTER LEDtube VLE 600mm HO 8W 840 T8	25.8 mm	28 mm	588.5 mm	595.5 mm	602.5 mm

TLED 2ft 220-240V 8-18W 1050lm 4000K G13

Photometric data



LEDtube 220-240V G13 2ft 1050lm 4000k

LEDtube 220-240V G13

Master Value LEDtube T8

Photometric data

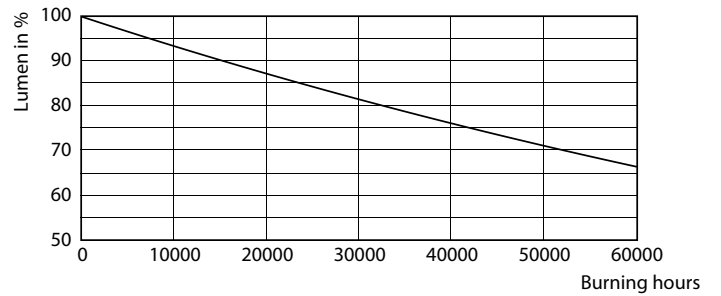


LEDtube 220-240V G13 4000k

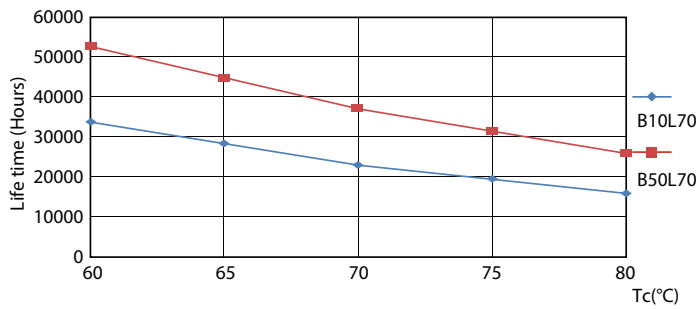
Lifetime



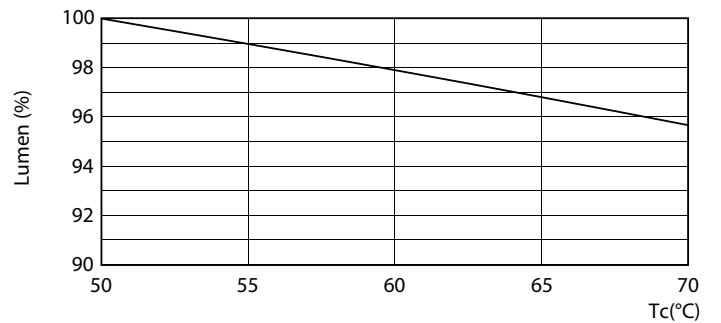
LEDtube 220-240V G13



LEDtube 220-240V G13



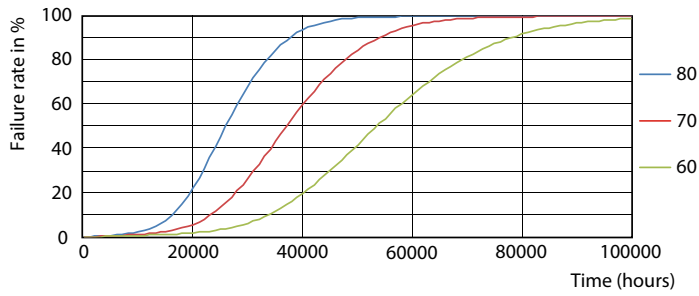
LEDtube 220-240V G13 LifetimeVsTc



LEDtube 220-240V G13 2ft LumenVsTc

Master Value LEDtube T8

Lifetime



LEDtube 220-240V G13 FailureRate

