



PrimaVision Mini for CDM

HID-PV m 20 /S CDM 220-240V 50/60Hz

Miniature HID electronic gear for PGJ5 CDM lamps – freeing up the boundaries of creativity and innovation in luminaire design

Product data

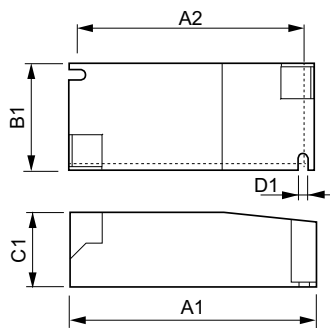
General Information		Constant wattage deviation	
Application code	HPF	Constant wattage deviation	-3%/ +3%
Type version	mk2	Power losses (nom.)	3.5 W
Lamp type	CDM	Inrush current peak (max.)	15 A
Number of lamps	1 piece/unit	Wiring	
Suitable for outdoor use	No	Cable capacity output wires mutual (nom.)	50 pF
Number of products on MCB (16 A type B) (nom.)	32	Cable length from device to lamp	0.5 m
Automatic restart	Yes	Wire strip length	8.5-9.5 mm
Operating and Electrical		Ballast contact wire cross section	0.75-1.50 mm ²
Input Voltage	220 to 240 V	Connector type	Insert
Input frequency	50 to 60 Hz	System characteristics	
Minimum mains voltage operation (min.)	198 V	Rated ballast-lamp power	20 W
Power factor 100% load (nom.)	0.95	Temperature	
Ignition voltage (max.)	4.5 kV	T-ambient (max.)	55 °C
Ignition voltage (min.)	3.3 kV	T-ambient (min.)	-20 °C
Ignition switch-off time (nom.)	21 min	T storage (max.)	80 °C
Mains voltage performance (AC)	198-254V	T storage (min.)	-25 °C
Mains voltage safety (AC)	180-264V	T-case lifetime (nom.)	80 °C
Earth leakage current (max.)	0.5 mA	T-Case maximum (max.)	80 °C
Inrush current width	0.25 ms		

PrimaVision Mini for CDM

Mechanical and Housing	
Housing	/S
Approval and Application	
Active temperature protection	Yes
EMI 9 kHz ... 300 MHz	CISPR 15 ed 7.2 / 2009
Vibration standard	IEC68-2-6 F c
Bumps standard	IEC 68-2-29 Eb
Approval marks	CE marking ENEC certificate VDE certificate
Humming and noise level	< 25 dB(A)

Product Data	
Full product code	871829167159600
Order product name	HID-PV m 20 /S CDM 220-240V 50/60Hz
EAN/UPC – product	8718291671596
Order code	67159600
SAP numerator – quantity per pack	1
Numerator – packs per outer box	12
Material no. (12 NC)	913700696066
SAP net weight (piece)	0.115 kg

Dimensional drawing



HID-PV m 20 /S CDM HPF 220-240V 50/60Hz

Product	D1	C1	A1	A2	B1
HID-PV m 20 /S CDM 220-240V 50/60Hz	4.2 mm	30.2 mm	97.3 mm	88.3 mm	43.3 mm

