



# The new generation of Mains T5 LEDtube lighting

## MASTER LEDtube Mains T5

The new Philips Master LEDtube Mains T5 brings simplicity to your lighting project. You don't need to pay attention to the driver technology anymore. Thanks to a unique design, Philips MASTER LEDtube Mains T5 installs in luminaires operating on mains power connection. So simple to operate! Perfectly safe, reliable & easy to install, the Philips MASTER LEDtube Mains T5 is the ideal alternative to standard fluorescent tubes to maximise value over lifetime with high energy savings and lower maintenance costs.

### Benefits

- Reduced operational cost thanks to lower energy consumption
- Lower maintenance cost thanks to a longer lifetime than conventional lamps
- The fastest and easiest way to upgrade existing luminaires to LEDtechnology; completely safe product and installation process

### Features

- Replacement of existing T5 lamps: operates with a mains power connection
- Energy savings compared with fluorescent tubes
- Long lifetime
- No mercury

### Application

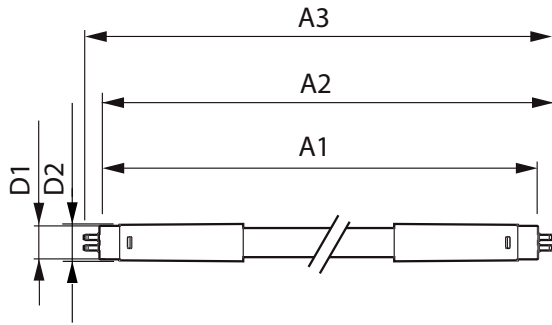
- Offices, shops, classrooms
- Industrial facilities and warehouses

# MASTER LEDtube Mains T5

## Versions



## Dimensional drawing



| Product                                | D1    | D2      | A1      | A2        | A3        |
|--|-------|---------|---------|-----------|-----------|
| MASTER LEDtube 1500mm<br>HO 26W 830 T5 | 15 mm | 16.9 mm | 1449 mm | 1456.1 mm | 1463.2 mm |
| MASTER LEDtube 1500mm<br>HO 26W 865 T5 | 15 mm | 16.9 mm | 1449 mm | 1456.1 mm | 1463.2 mm |
| MASTER LEDtube 1500mm<br>HO 26W 840 T5 | 15 mm | 16.9 mm | 1449 mm | 1456.1 mm | 1463.2 mm |

# MASTER LEDtube Mains T5

## Approval and Application

|                               |        |
|-------------------------------|--------|
| Energy Consumption kWh/1000 h | 26 kWh |
| Energy Efficiency Label (EEL) | A++    |

## Controls and Dimming

|          |    |
|----------|----|
| Dimmable | No |
|----------|----|

## Operating and Electrical

|                     |             |
|---------------------|-------------|
| Input Frequency     | 50 to 60 Hz |
| Voltage (Nom)       | 220-240 V   |
| Power (Rated) (Nom) | 26 W        |
| Starting Time (Nom) | 0.5 s       |

## General Information

|                        |          |
|------------------------|----------|
| Cap-Base               | G5       |
| Nominal Lifetime (Nom) | 50000 h  |
| Switching Cycle        | 200,000X |

## Light Technical

|                                       |       |
|---------------------------------------|-------|
| Beam Angle (Nom)                      | 200 ° |
| Colour Rendering Index (Nom)          | 80    |
| Llmf At End Of Nominal Lifetime (Nom) | 70 %  |

## Mechanical and Housing

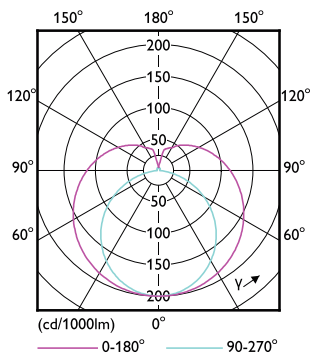
|            |                    |
|------------|--------------------|
| Bulb Shape | Tube, double-ended |
|------------|--------------------|

## Temperature

|                      |         |
|----------------------|---------|
| T-Ambient (Max)      | 45 °C   |
| T-Ambient (Min)      | -20 °C  |
| T-Case Maximum (Nom) | 67.4 °C |
| T-Storage (Max)      | 65 °C   |
| T-Storage (Min)      | -40 °C  |

## Light Technical

| Order Code | Full Product Name                   | Colour Code | Correlated Colour Temperature (Nom) | Luminous Flux (Nom) |
|------------|-------------------------------------|-------------|-------------------------------------|---------------------|
| 81929600   | MASTER LEDtube 1500mm HO 26W 830 T5 | 830         | 3000 K                              | 3600 lm             |
| 81931900   | MASTER LEDtube 1500mm HO 26W 840 T5 | 841         | 4000 K                              | 3900 lm             |
| 81933300   | MASTER LEDtube 1500mm HO 26W 865 T5 | 865         | 6500 K                              | 3900 lm             |



## MASTER LEDtube Mains T5

