



# TubePoint GEN2 – Luminaire range for traffic tunnels

## TubePoint gen2

Many tunnel authorities have an outdated tunnel-lighting installation that urgently needs to be replaced, but have only limited budget available. We are able to fulfil their requirements. TubePoint GEN2 is the result of years of experience in tunnel lighting combined with the latest technologies developed by Philips. With its modular design and modern LED architecture, TubePoint GEN2 is a versatile, cost-effective luminaire that meets the most stringent tunnel-lighting requirements. It is made of highest-quality components that are dedicated for tunnels, thus ensuring a long lifetime, good performance and low maintenance costs. The efficiency and wide choice of optics means that the number of luminaires can be reduced significantly compared with a conventional solution. And a high lumen per watt ratio at system level improves the total cost of ownership. TubePoint GEN2 is part of Philips' TotalTunnel solution for a complete tunnel lighting.

### Benefits

- Flexible mounting solution, quick release for easy maintenance
- Easy-connect, a wide range of connectivity options
- Excellent quality optics, longer distance between luminaires
- Fast payback
- Equipped with a service tag, a QR-based identification system that makes each luminaire uniquely identifiable and provides maintenance, installation and spare part information

# TubePoint gen2

## Features

- Direct replacement of existing conventional luminaires (Lumen packages exceeding SON-T 400 W)
- Flexibility in application thanks to a range of lumen outputs and tunnel optics
- Compatible with Philips' tunnel controls and options for third-party controls
- Option of remote driver for quick and easy maintenance
- Wide choice of mounting systems

## Application

- Traffic tunnels and underpasses

## Versions



TubePoint GEN2 Small



TubePoint GEN2 Medium

## Product details



TubePoint\_GEN2-BGP235\_MB-DPP.TIF

TubePoint\_GEN2-BGP235-1DPP.TIF



TubePoint\_GEN2-BGP235\_MBQ-S-2DPP.TIF

TubePoint\_GEN2-BGP235\_MBQ\_M-DPP.TIF



# TubePoint gen2

## Product details



TubePoint\_GEN2-  
BGP235\_BA\_SO-8DPP.TIF



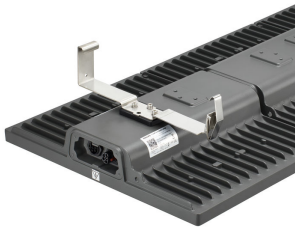
TubePoint\_GEN2-  
BGP235\_MBQ\_S-DPP.TIF



TubePoint\_GEN2-  
BGP235-2DPP.TIF



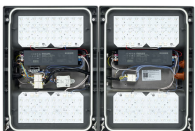
TubePoint\_GEN2-BGP235\_BA-  
DPP.TIF



TubePoint\_GEN2-  
BGP235\_MBQ\_L-DPP.TIF



TubePoint\_GEN2-BGP235\_MBA-  
DPP.TIF



TubePoint\_GEN2-  
BGP236-1DPP.TIF



TubePoint\_GEN2-  
BGP236-2DPP.TIF

# TubePoint gen2

## Application Conditions

Maximum dim level	10%
-------------------	-----

## Approval and Application

Mech. impact protection code	IK09
Surge Protection (Common/Differential)	Luminaire surge protection level up to 6 kV differential mode and 6 kV common mode

## Controls and Dimming

Dimmable	Yes
----------	-----

## General Information

Luminaire light beam spread	101° x 158°
CE mark	CE mark
Light source colour	740 neutral white
Optical cover/lens type	FG
Driver included	Yes
Flammability mark	F
Light source replaceable	Yes
Optic type	Distribution symmetrical medium 11

## Initial Performance (IEC Compliant)

Init. Corr. Colour Temperature	4000 K
Init. Colour Rendering Index	>70

## Light Technical

Standard tilt angle side entry	0°
Standard tilt angle posttop	-
Upward light output ratio	0

## Mechanical and Housing

Colour	Dark gray
--------	-----------

## General Information

Order Code	Full Product Name	Lamp family code	Number of gear units	Number of light sources	Product Family Code
48290900	BGP235 LED30-4S/740 DSM11 D9 MIO-CIO MBQ	LED30	1 unit	20	BGP235
48291600	BGP235 LED50-4S/740 DSM11 D9 MIO-CIO MBQ	LED50	1 unit	20	BGP235
48292300	BGP235 LED90-4S/740 DSM11 D9 MIO-CIO MBQ	LED90	1 unit	28	BGP235
48293000	BGP235 LED120-4S/740 DSM11 D9 MIO-CIO MB	LED120	1 unit	40	BGP235
48294700	BGP235 LED180-4S/740 DSM11 D9 MIO-CIO MB	LED180	1 unit	56	BGP235
48296100	BGP236 LED360-4S/740 DSM11 D9 MIO-CIO MB	LED360	2 units	112	BGP236

## Initial Performance (IEC Compliant)

Order Code	Full Product Name	Initial luminous flux	Order Code	Full Product Name	Initial luminous flux
48290900	BGP235 LED30-4S/740 DSM11 D9 MIO-CIO MBQ	2520 lm	48293000	BGP235 LED120-4S/740 DSM11 D9 MIO-CIO MB	9840 lm
48291600	BGP235 LED50-4S/740 DSM11 D9 MIO-CIO MBQ	4200 lm	48294700	BGP235 LED180-4S/740 DSM11 D9 MIO-CIO MB	14940 lm
48292300	BGP235 LED90-4S/740 DSM11 D9 MIO-CIO MBQ	7470 lm	48296100	BGP236 LED360-4S/740 DSM11 D9 MIO-CIO MB	29880 lm

## TubePoint gen2

