



# MASTER Value LEDtube T8

## MASTER LEDtube VLE 1200mm HO 14W840 T8

A high-performance LED solution, the professional MASTER Value LED tube is ideal for replacing T8 fluorescent lamps using EM ballast or installing directly on the mains. This product provides a uniform lighting effect for use in all general lighting, as well as instant energy-efficiency, making for an environmentally friendly solution.

### Product data

General Information	
Cap base	G13 [ Medium Bi-Pin Fluorescent]
EU RoHS compliant	Yes
Nominal lifetime (nom.)	50000 h
Switching cycle	200,000X

Light Technical	
Colour Code	841 [ CCT of 4100K (841)]
Beam Angle (Nom)	240 °
Luminous flux (nom.)	2100 lm
Colour designation	Cool White (CW)
Correlated Colour Temperature (Nom)	4000 K
Luminous efficacy (rated) (nom.)	150.00 lm/W
Colour consistency	<6
Colour rendering index (nom.)	83
LLMF at end of nominal lifetime (nom.)	70 %

Operating and Electrical	
Input frequency	50 to 60 Hz
Power (Rated) (Nom)	14 W

Lamp current (nom.)	66 mA
Starting time (nom.)	0.5 s
Warm-up time to 60% light (nom.)	0.5 s
Power factor (nom.)	0.9
Voltage (Nom)	220-240 V

Temperature	
T-ambient (max.)	45 °C
T-ambient (min.)	-20 °C
T storage (max.)	65 °C
T storage (min.)	-40 °C
T-Case maximum (nom.)	55 °C

Controls and Dimming	
Dimmable	No

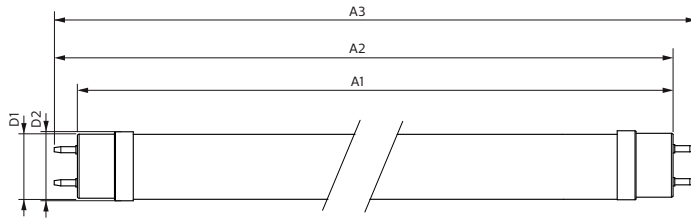
Mechanical and Housing	
Lamp Finish	Frosted
Bulb material	Glass
Product length	1200 mm

# MASTER Value LEDtube T8

Bulb shape	Tube, double-ended
<b>Approval and Application</b>	
Energy-saving product	Yes
Approval marks	RoHS compliance KEMA Keur certificate
<b>Product Data</b>	
Full product code	871951435076200
Order product name	MASTER LEDtube VLE 1200mm HO 14W840 T8

EAN/UPC – product	8719514350762
Order code	35076200
SAP numerator – quantity per pack	1
Numerator – packs per outer box	10
SAP material	929003070208
SAP net weight (piece)	0.215 kg

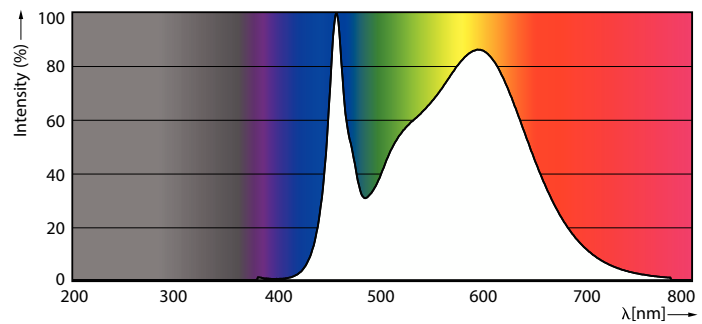
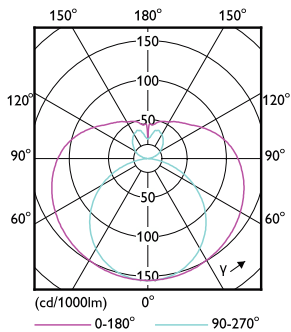
## Dimensional drawing



Product	D1	D2	A1	A2	A3
MASTER LEDtube VLE 1200mm HO 14W840 T8	25.8 mm	28 mm	1198.2 mm	1205.3 mm	1212.4 mm

MASTER LEDtube VLE 1200mm HO 14W840 T8

## Photometric data

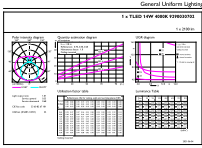


LEDtube MAS GMGC 14W G13 2000lm-LDD

LEDtube MAS GMGC 14W G13 2100lm 840-POC

# MASTER Value LEDtube T8

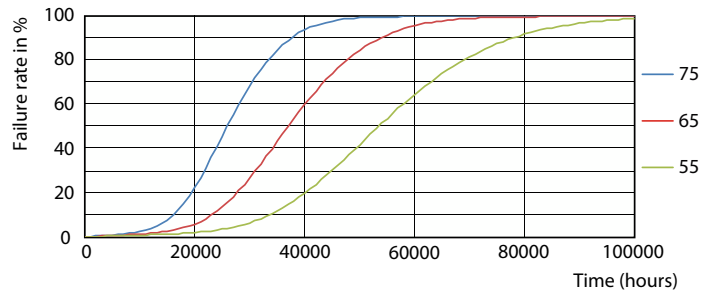
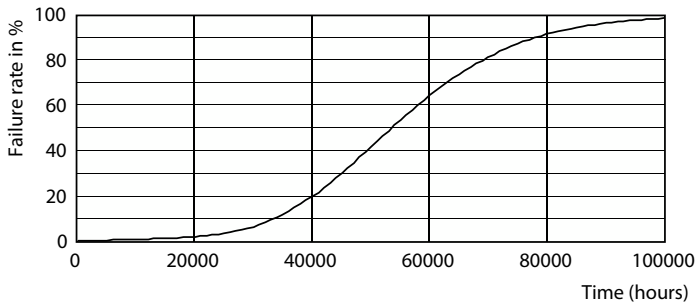
## Photometric data



Technical Parameters 43 Page 10

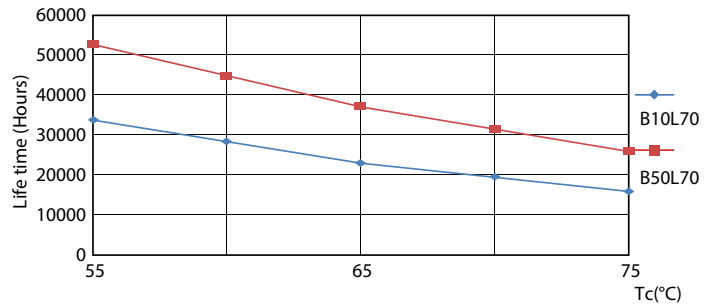
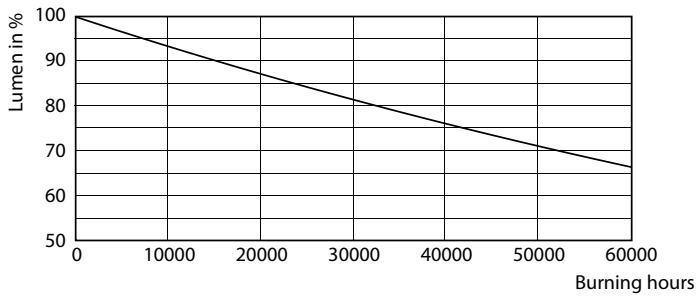
LEDtube MAS GMGC 14W G13 2100lm 840-GUL

## Lifetime



LEDtube 50K-LED

LEDtube 50K 5575 FailureRate-LED

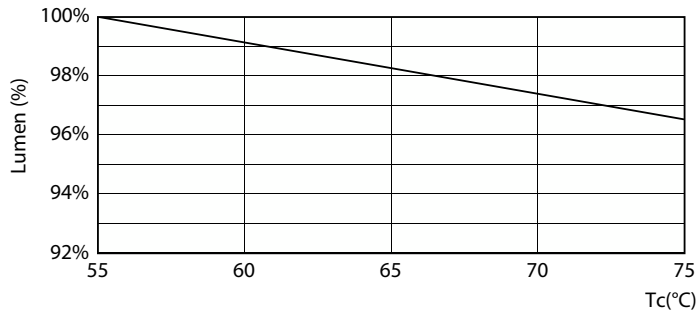


LEDtube 50K-LMP

LEDtube 50K 5575 LifetimeVsTc-LED

# MASTER Value LEDtube T8

## Lifetime



LEDtube MAS GMGC 8W 50K LumenVsTc-LMP

