

MASTER Value LEDtube T8

MASTER LEDtube VLE 600mm HO 8W 840 T8

A high-performance LED solution, the professional MASTER Value LED tube is ideal for replacing T8 fluorescent lamps using EM ballast or installing directly on the mains. This product provides a uniform lighting effect for use in all general lighting, as well as instant energy-efficiency, making for an environmentally friendly solution.

Product data

General Information	
Cap base	G13 [Medium Bi-Pin Fluorescent]
EU RoHS compliant	Yes
Nominal lifetime (nom.)	50000 h
Switching cycle	200,000X

Light Technical	
Colour Code	841 [CCT of 4100K (841)]
Beam Angle (Nom)	240 °
Luminous flux (nom.)	1050 lm
Colour designation	Cool White (CW)
Correlated Colour Temperature (Nom)	4000 K
Luminous efficacy (rated) (nom.)	131.00 lm/W
Colour consistency	<6
Colour rendering index (nom.)	83
LLMF at end of nominal lifetime (nom.)	70 %

Operating and Electrical	
Input frequency	50 to 60 Hz
Power (Rated) (Nom)	8 W

Lamp current (nom.)	39 mA
Starting time (nom.)	0.5 s
Warm-up time to 60% light (nom.)	0.5 s
Power factor (nom.)	0.9
Voltage (Nom)	220-240 V

Temperature	
T-ambient (max.)	45 °C
T-ambient (min.)	-20 °C
T storage (max.)	65 °C
T storage (min.)	-40 °C
T-Case maximum (nom.)	55 °C

Controls and Dimming	
Dimmable	No

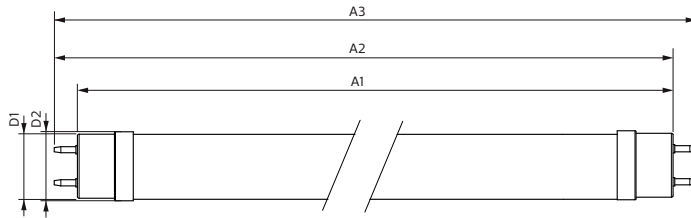
Mechanical and Housing	
Lamp Finish	Frosted
Bulb material	Glass
Product length	600 mm

MASTER Value LEDtube T8

Bulb shape	Tube, double-ended
Approval and Application	
Energy-saving product	Yes
Approval marks	RoHS compliance KEMA Keur certificate
Product Data	
Full product code	871951435070000
Order product name	MASTER LEDtube VLE 600mm HO 8W 840 T8

EAN/UPC – product	8719514350700
Order code	35070000
SAP numerator – quantity per pack	1
Numerator – packs per outer box	10
SAP material	929003069908
SAP net weight (piece)	0.120 kg

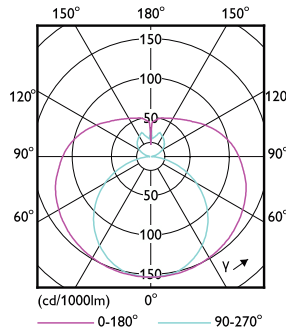
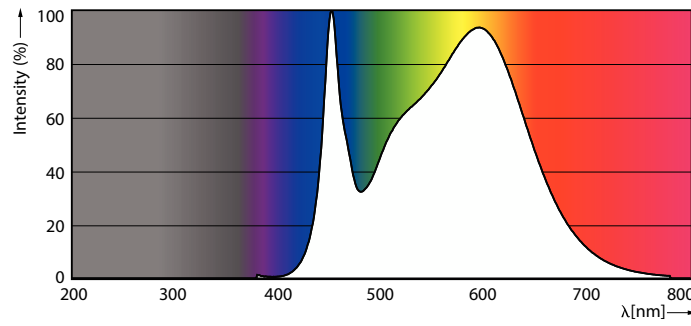
Dimensional drawing



Product	D1	D2	A1	A2	A3
MASTER LEDtube VLE 600mm HO 8W 840 T8	25.8 mm	28 mm	588.5 mm	595.5 mm	602.5 mm

MASTER LEDtube VLE 600mm HO 8W 840 T8

Photometric data

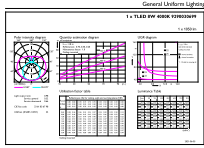


LEDtube MAS GMGC 8W G13 1050lm 840-POC

LEDtube MAS GMGC 8W G13 1050lm-LDD

MASTER Value LEDtube T8

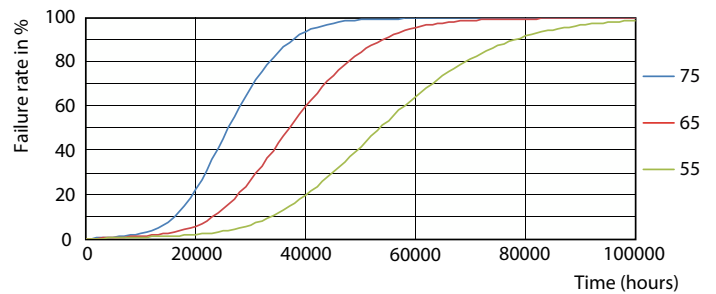
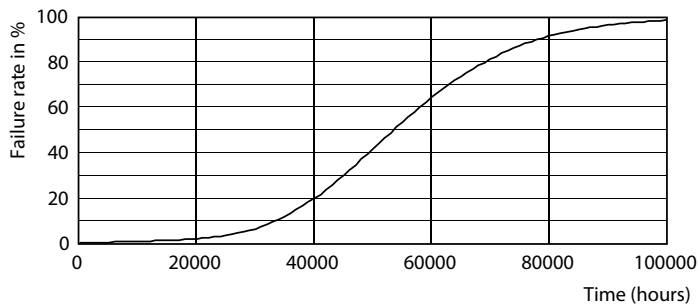
Photometric data



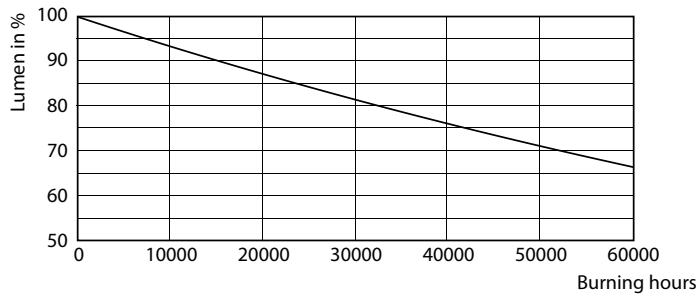
Master Value LEDtube T8
Page 10

LEDtube MAS GMGC 8W G13 1050lm 840-GUL

Lifetime

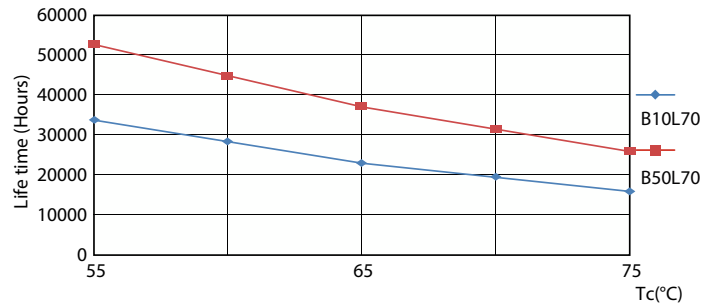


Life Expectancy Diagram



Lumen Maintenance Diagram

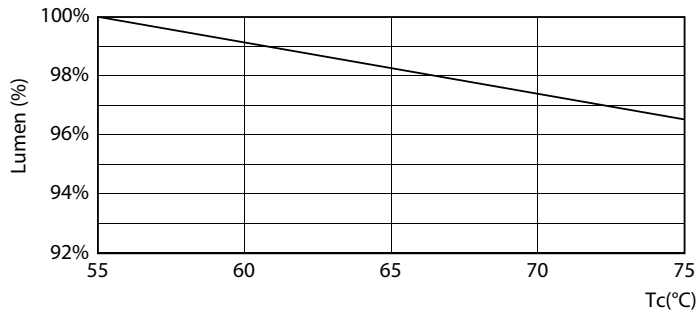
LEDtube 50K 5575 FailureRate-LED



LEDtube 50K 5575 LifetimeVsTc-LED

MASTER Value LEDtube T8

Lifetime



LEDtube MAS GMGC 8W 50K LumenVsTc-LMP

