



# MASTER LEDtube Mains T5

## MASTER LEDtube 1500mm HE 20W 865 T5

The new Philips Master LEDtube Mains T5 brings simplicity to your lighting project. You don't need to pay attention to the driver technology anymore. Thanks to a unique design, Philips MASTER LEDtube Mains T5 installs in luminaires operating on mains power connection. So simple to operate! ;Perfectly safe, reliable & easy to install, the Philips MASTER LEDtube Mains T5 is the ideal alternative to standard fluorescent tubes to maximise value over lifetime with high energy savings and lower maintenance costs.

### Product data

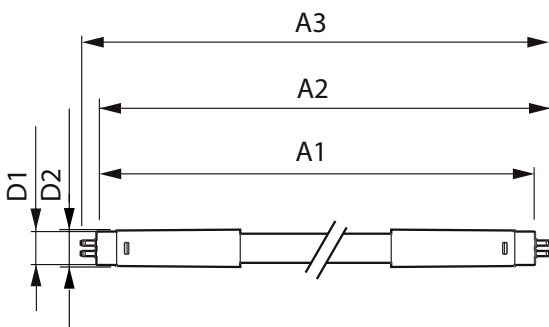
General information		LLMF at end of nominal lifetime (nom.) 70 %	
Cap base	G5 [ G5]		
EU RoHS compliant	Yes		
Nominal lifetime (nom.)	50000 h		
Switching cycle	200000		
Technical type	20-35W		
	Sphere		
Light technical		Operating and electrical	
Colour Code	865 [ CCT of 6,500 K]	Input frequency	50 to 60 Hz
Beam Angle (Nom)	200 °	Power (Rated) (Nom)	20 W
Luminous flux (nom.)	3000 lm	Lamp current (max.)	230 mA
Colour designation	Cool Daylight	Lamp current (min.)	85 mA
Correlated Colour Temperature (Nom)	6500 K	Starting time (nom.)	0.5 s
Luminous efficacy (rated) (nom.)	150.00 lm/W	Warm-up time to 60% light (nom.)	0.5 s
Colour consistency	<6	Power factor (nom.)	0.9
Colour rendering index (nom.)	80	Voltage (Nom)	100-240 V
		Temperature	
		T-ambient (max.)	45 °C
		T-ambient (min.)	-20 °C
		T storage (max.)	65 °C
		T storage (min.)	-40 °C

# MASTER LEDtube Mains T5

T-Case maximum (nom.)	75 °C
<b>Controls and dimming</b>	
Dimmable	No
<b>Mechanical and housing</b>	
Lamp Finish	Frosted
Bulb material	Glass
Product length	1500 mm
Bulb shape	Tube, double-ended
<b>Approval and application</b>	
Energy Efficiency Class	D
Energy-saving product	Yes
Approval marks	RoHS compliance CE marking KEMA Keur certificate

Energy consumption kWh/1,000 hours	20 kWh
	467356
<b>Product data</b>	
Full product code	871869978359400
Order product name	MASTER LEDtube 1500mm HE 20W 865 T5
EAN/UPC – product	8718699783594
Order code	78359400
SAP numerator – quantity per pack	1
Numerator – packs per outer box	10
SAP material	929002421408
Net Weight (Piece)	0.176 kg

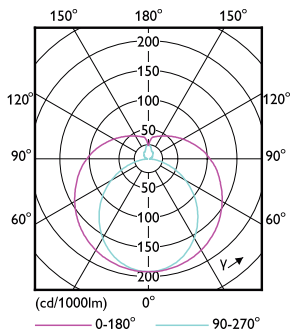
## Dimensional drawing



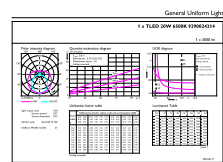
MASTER LEDtube 1500mm HE 20W 865 T5

Product	D1	D2	A1	A2	A3
MASTER LEDtube 1500mm HE 20W 865 T5	15.8 mm	19 mm	1449 mm	1454.9 mm	1463.2 mm

## Photometric data



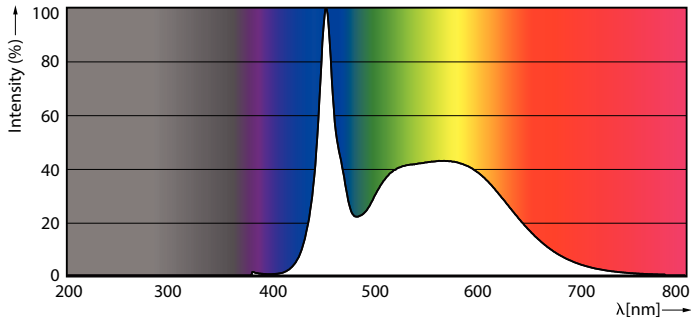
LEDtube MAS 8W G5 1000lm



LEDtube MAS 20W G5 3000lm 865

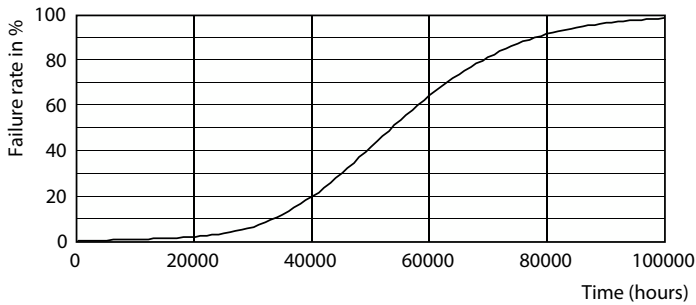
# MASTER LEDtube Mains T5

## Photometric data

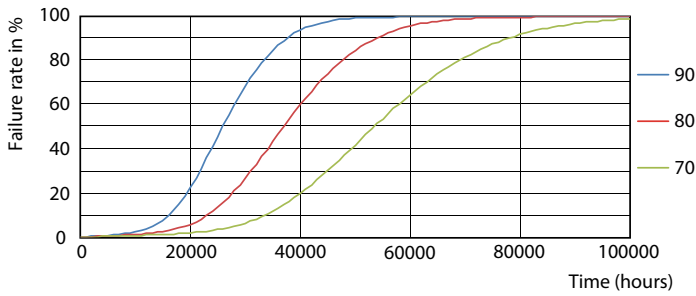


LEDtube MAS 16,5W G5 2500lm 865

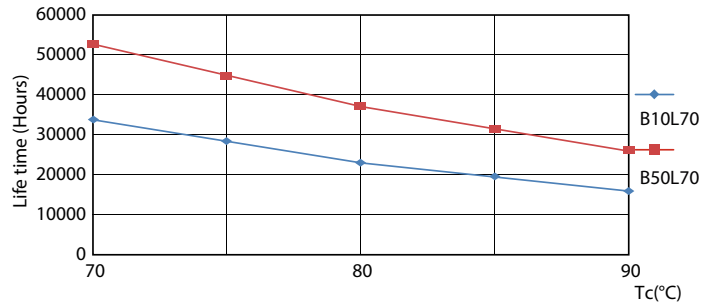
## Lifetime



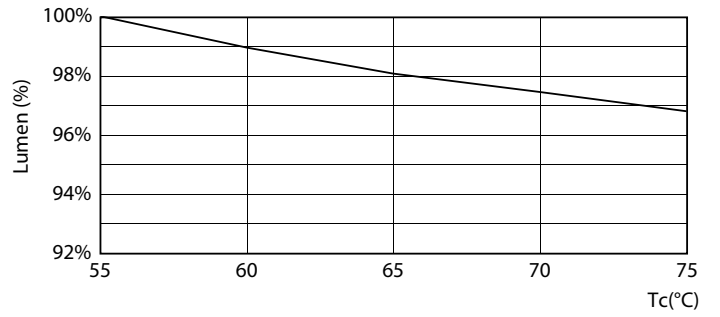
Life Expectancy Diagram



LEDtube MAS 1 26W 50K FailureRate-LED



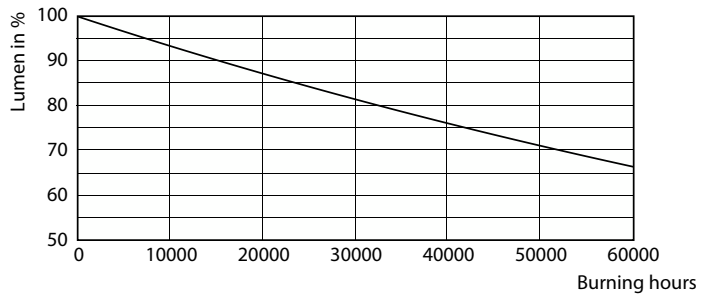
LEDtube MAS 1 26W 50K LifetimeVsTc-LED



LEDtube MAS G3 20W 50K LumenVsTc-LMP

# MASTER LEDtube Mains T5

## Lifetime



Lumen Maintenance Diagram

