



# MASTER LEDtube Mains T5

## MASTER LEDtube 1500mm HE 20W 840 T5

The new Philips Master LEDtube Mains T5 brings simplicity to your lighting project. You don't need to pay attention to the driver technology anymore. Thanks to a unique design, Philips MASTER LEDtube Mains T5 installs in luminaires operating on mains power connection. So simple to operate! ;Perfectly safe, reliable & easy to install, the Philips MASTER LEDtube Mains T5 is the ideal alternative to standard fluorescent tubes to maximise value over lifetime with high energy savings and lower maintenance costs.

### Product data

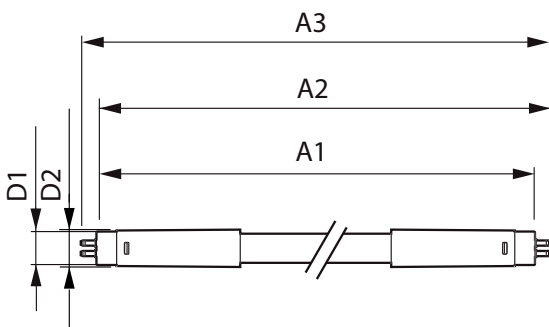
| General information                 |                           | LLMF at end of nominal lifetime (nom.) 70 % |             |
|-------------------------------------|---------------------------|---|-------------|
| Cap base                            | G5 [ G5]                  |   |             |
| EU RoHS compliant                   | Yes                       |   |             |
| Nominal lifetime (nom.)             | 50000 h                   |   |             |
| Switching cycle                     | 200000                    |   |             |
| Technical type                      | 20-35W                    |   |             |
|                                     | Sphere                    |   |             |
| Light technical                     |                           | Operating and electrical                    |             |
| Colour Code                         | 841 [ CCT of 4100K (841)] | Input frequency                             | 50 to 60 Hz |
| Beam Angle (Nom)                    | 200 °                     | Power (Rated) (Nom)                         | 20 W        |
| Luminous flux (nom.)                | 3000 lm                   | Lamp current (max.)                         | 230 mA      |
| Colour designation                  | Cool White (CW)           | Lamp current (min.)                         | 85 mA       |
| Correlated Colour Temperature (Nom) | 4000 K                    | Starting time (nom.)                        | 0.5 s       |
| Luminous efficacy (rated) (nom.)    | 150.00 lm/W               | Warm-up time to 60% light (nom.)            | 0.5 s       |
| Colour consistency                  | <6                        | Power factor (nom.)                         | 0.9         |
| Colour rendering index (nom.)       | 80                        | Voltage (Nom)                               | 100-240 V   |
|                                     |                           | Temperature                                 |             |
|                                     |                           | T-ambient (max.)                            | 45 °C       |
|                                     |                           | T-ambient (min.)                            | -20 °C      |
|                                     |                           | T storage (max.)                            | 65 °C       |
|                                     |                           | T storage (min.)                            | -40 °C      |

# MASTER LEDtube Mains T5

|                                 |  |
|---------------------------------|--|
| T-Case maximum (nom.)           | 75 °C  |
| <b>Controls and dimming</b>     |  |
| Dimmable                        | No   |
| <b>Mechanical and housing</b>   |  |
| Lamp Finish                     | Frosted  |
| Bulb material                   | Glass  |
| Product length                  | 1500 mm  |
| Bulb shape                      | Tube, double-ended                               |
| <b>Approval and application</b> |  |
| Energy Efficiency Class         | D  |
| Energy-saving product           | Yes  |
| Approval marks                  | RoHS compliance CE marking KEMA Keur certificate |

|                                    |                                     |
|------------------------------------|-------------------------------------|
| Energy consumption kWh/1,000 hours | 20 kWh                              |
|                                    | 467355                              |
| <b>Product data</b>                |                                     |
| Full product code                  | 871869978357000                     |
| Order product name                 | MASTER LEDtube 1500mm HE 20W 840 T5 |
| EAN/UPC – product                  | 8718699783570                       |
| Order code                         | 78357000                            |
| SAP numerator – quantity per pack  | 1                                   |
| Numerator – packs per outer box    | 10                                  |
| SAP material                       | 929002421308                        |
| Net Weight (Piece)                 | 0.176 kg                            |

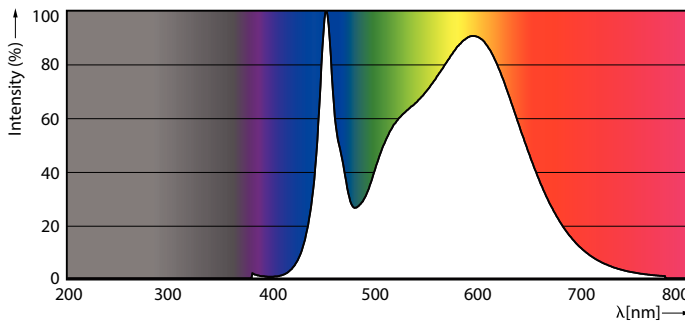
## Dimensional drawing



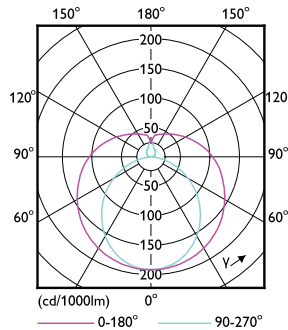
MASTER LEDtube 1500mm HE 20W 840 T5

| Product                             | D1      | D2    | A1      | A2        | A3        |
|-------------------------------------|---------|-------|---------|-----------|-----------|
| MASTER LEDtube 1500mm HE 20W 840 T5 | 15.8 mm | 19 mm | 1449 mm | 1454.9 mm | 1463.2 mm |

## Photometric data



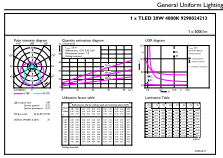
LEDtube MAS 16,5W G5 2500lm 840



LEDtube MAS 8W G5 1000lm

# MASTER LEDtube Mains T5

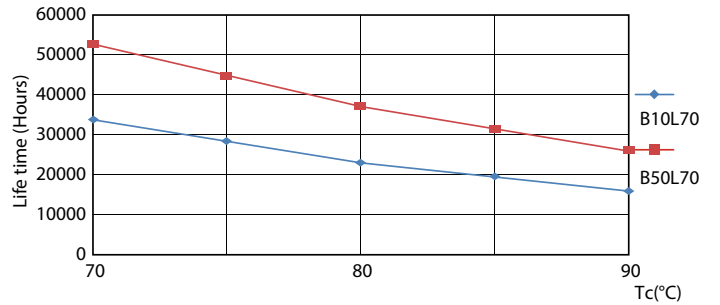
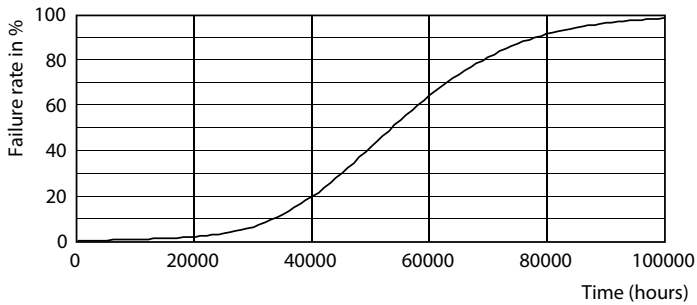
## Photometric data



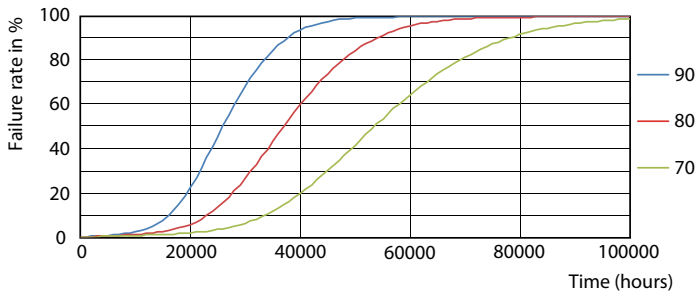
© 2022 Philips Lighting B.V. Page 11 of 11

LEDtube MAS 20W G5 3000lm 840

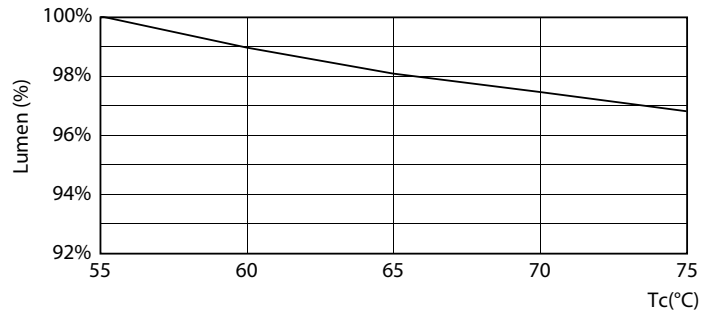
## Lifetime



Life Expectancy Diagram



LEDtube MAS 1 26W 50K LifetimeVsTc-LED

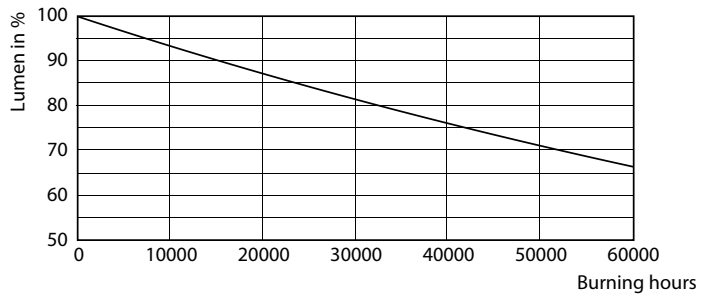


LEDtube MAS 1 26W 50K FailureRate-LED

LEDtube MAS G3 20W 50K LumenVsTc-LMP

# MASTER LEDtube Mains T5

## Lifetime



Lumen Maintenance Diagram

