



MASTER LEDtube InstantFit HF T5

Master LEDtube HF 600mm HE 8W 830 T5

The Philips MASTER LEDtube integrates a LED light source into a traditional fluorescent form factor. Its unique design creates a perfectly uniform visual appearance, which cannot be distinguished from traditional fluorescent. These T5 lighting tubes are the right choice for absolute performance and are designed to stand up to everyday conditions. Unparalleled savings thanks to low energy consumption and an exceptionally long lifetime make these T5 LED tubes the choice for every demanding application.

Product data

Approval and Application		LLMF At End Of Nominal Lifetime (Nom)	
Cap-Base	G5 [G5]		70 %
CE mark	Yes	Photobiological safety according to EN 62471	RG0
Nominal lifetime	60,000 hour(s)		
Switching Cycle	50,000		
Lighting Technology	LED		
Flux measurement reference	Sphere		
EU RoHS compliant	Yes		
Light Technical		Operating and Electrical	
Color Code	830 [CCT of 3000K]	Line Frequency	30K to 100K Hz
Beam Angle (Nom)	200 degree(s)	Input Frequency	30K to 100K Hz
Luminous Flux	1,000 lumen	Power Consumption	8 W
Color Designation	White (WH)	Starting Time (Nom)	0.5 s
Correlated Color Temperature (Nom)	3000 K	Warm-up time to 60% light	0.5 s
Luminous Efficacy (rated) (Nom)	125.00 lm/W	Power Factor (Fraction)	0.92
Color Consistency	<6	Voltage (Nom)	40-70 V
Color rendering index (CRI)	80	LED alternative to fluorescent lamp power	14 W
		Temperature	
		Ambient temperature range	-20 °C to 45 °C
		T-Case Maximum (Nom)	65 °C

MASTER LEDtube InstantFit HF T5

Controls and Dimming

Dimmable	Yes - Check ballast compatibility
----------	-----------------------------------

Mechanical and Housing

Bulb Finish	Frosted
Bulb Material	Glass
Product Length	600 mm
Bulb Shape	Tube, double-ended

Approval and Application

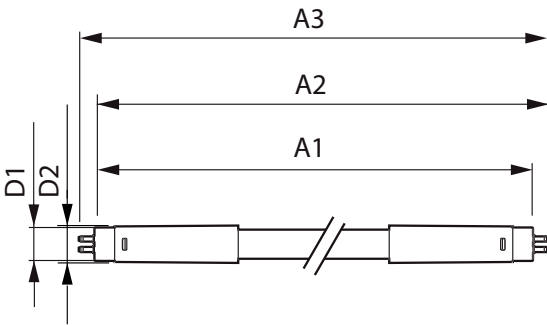
Energy Efficiency Class	E
Energy Saving Product	Yes
Approval Marks	RoHS compliance TUV CE marking KEMA Keur certificate
Energy Consumption kWh/1000 h	8 kWh

EPREL Registration Number	1384131
---------------------------	---------

Product Data

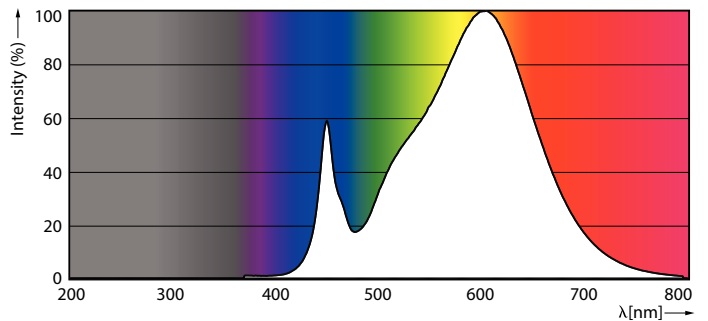
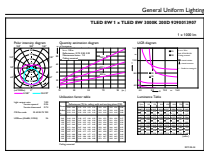
Full product code	871869674323200
Order product name	MAS LEDtube HF 600mm HE 8W 830 T5
Order code	74323200
Numerator - Quantity Per Pack	1
Numerator - Packs per outer box	10
Material Nr. (12NC)	929001390702
Full product name	Master LEDtube HF 600mm HE 8W 830 T5
EAN/UPC - Case	8718696743249

Dimensional drawing



Product	D1	D2	A1	A2	A3
MAS LEDtube HF 600mm HE 8W 830 T5	15.5 mm	18.8 mm	549 mm	556.1 mm	563.2 mm

Photometric data

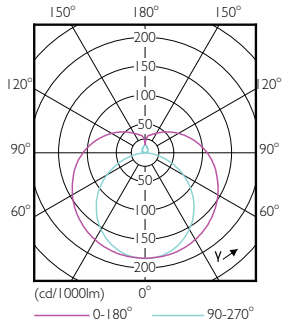


General uniform lighting - MAS LEDtube HF 600mm HE 8W 830 T5

Spectral Power Distribution Colour - MAS LEDtube HF 600mm HE 8W 830 T5

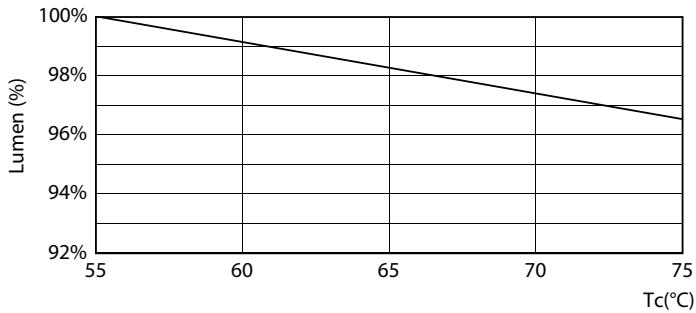
MASTER LEDtube InstantFit HF T5

Photometric data

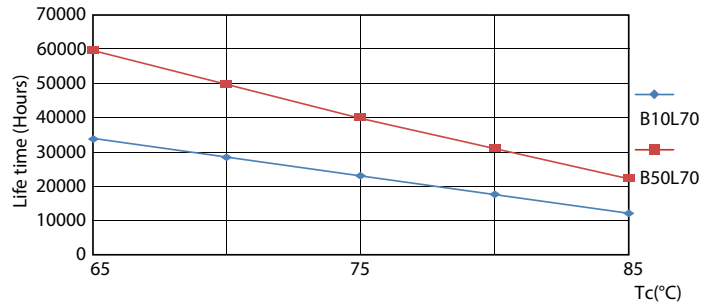


Light Distribution Diagram - MAS LEDtube HF 600mm HE 8W 830 T5

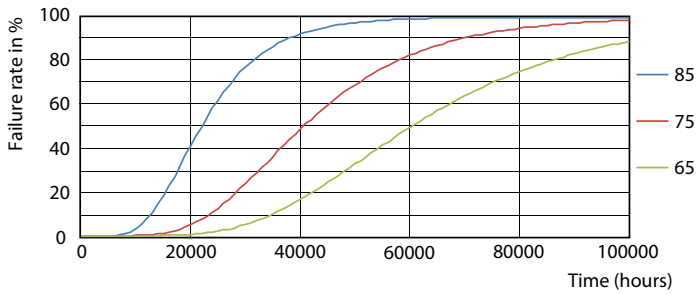
Lifetime



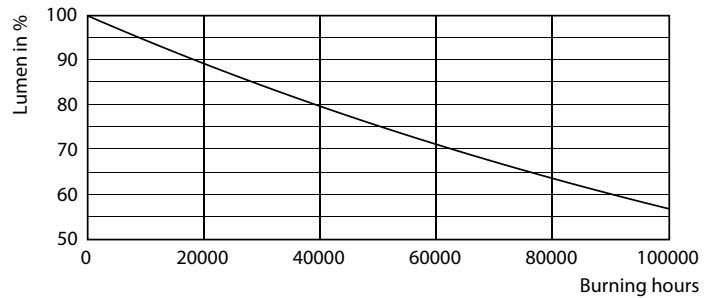
Lumen Maintenance Diagram - MAS LEDtube HF 600mm HE 8W 830 T5



Life Expectancy Diagram - MAS LEDtube HF 600mm HE 8W 830 T5



Life Expectancy Diagram - MAS LEDtube HF 600mm HE 8W 830 T5



Lumen Maintenance Diagram - MAS LEDtube HF 600mm HE 8W 830 T5

MASTER LEDtube InstantFit HF T5

Lifetime



Life Expectancy Diagram - MAS LEDtube HF 600mm HE 8W 830 T5

