



SmartBright LED Downlight – perfect green light

SmartBright LED Downlight

When switching from conventional CFL to LED lighting, most customers want a green solution with an attractive total cost of ownership. SmartBright LED Downlight is characterized by low cost and high efficiency, providing the end-user with the perfect green light fixture.

Benefits

- Cost-effective
- 60% energy saving compared with CFL
- Simple yet elegant design

Features

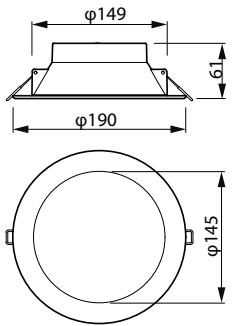
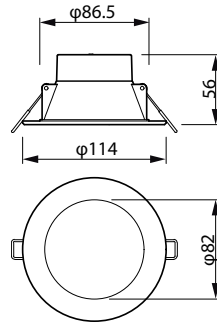
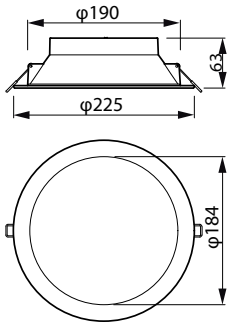
- System efficiency > 85 lm/W
- Good color consistency, ensuring visual comfort
- Safe and stable

Application

- Shops
- Public areas

SmartBright LED Downlight

Dimensional drawing



SmartBright LED Downlight

General Information

Driver included	Yes
Flammability mark	For mounting on normally flammable surfaces
Glow-wire test	Temperature 750 °C, duration 5 s
Light source replaceable	No
Number of gear units	1 unit

Light Technical

Correlated Color Temperature (Nom)	3000 K
Color rendering index (CRI)	80
Optic type	Beam angle 100°

Operating and Electrical

Input Voltage	220 to 240 V
Line Frequency	50 or 60 Hz

Temperature

Ambient temperature range	-20 to +40 °C
---------------------------	---------------

Controls and Dimming

Dimmable	Yes
----------	-----

Mechanical and Housing

Housing Color	White
---------------	-------

Approval and Application

Protection class IEC	Safety class II
Mech. impact protection code	IK03
Ingress protection code	IP40/IP54 front

Initial Performance (IEC Compliant)

Initial chromaticity	(3000K@, 0.4400, 0.40304000K@0.37600.36566500 K@0.31300.3370) 6
Luminous flux tolerance	3000K: ±10%:4000K: -10% / +20%:6500K: -10% / +20%

Over Time Performance (IEC Compliant)

Driver failure rate at 5000 h	1.2 %
-------------------------------	-------

Application Conditions

Maximum dim level	10% (depends on dimmer, ELV)
Suitable for random switching	Not applicable

Light Technical

Order Code	Full Product Name	Luminous Efficacy (rated) (Nom)	Luminous Flux
27356600	DN029B G2 LED8/CCT PSR-E D90 GM	106 lm/W	800 lumen
27360300	DN029B G2 LED12/CCT PSR-E D150 GM	114 lm/W	1,200 lumen
27362700	DN029B G2 LED20/CCT PSR-E D200 GM	111 lm/W	2,000 lumen

SmartBright LED Downlight

Operating and Electrical

Order Code	Full Product Name	Power Consumption	Order Code	Full Product Name	Power Consumption
27356600	DN029B G2 LED8/CCT PSR-E D90 GM	7.5 W	27362700	DN029B G2 LED20/CCT PSR-E D200 GM	18 W
27360300	DN029B G2 LED12/CCT PSR-E D150 GM	10.5 W			

