



MASTER LEDtube InstantFit HF T5

Master LEDtube HF 1500mm HO 26W 840 T5 OE

Philips MASTER LEDtube InstantFit T5 integrates a LED light source into a traditional fluorescent form factor. Its unique design creates a perfectly uniform visual appearance which cannot be distinguished from traditional fluorescents. The Philips MASTER LEDtube InstantFit T5 is the ideal solution for customers who have higher light output requirements and want to maximise value over the lifetime. The full energy savings & longer lifetime result in attractive payback times and TCO benefits.

Product data

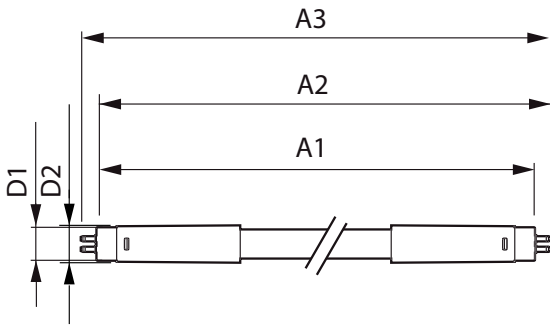
| General Information | | Operating and Electrical | |
|--|---------------------------|----------------------------------|------------------|
| Cap base | G5 [G5] | Input frequency | 20 K to 140 K Hz |
| EU RoHS compliant | Yes | Power (Rated) (Nom) | 26 W |
| Nominal lifetime (nom.) | 60000 h | Lamp current (max.) | 420 mA |
| Switching cycle | 50,000X | Lamp current (min.) | 150 mA |
| Technical type | 26-49W | Starting time (nom.) | 0.5 s |
| | Sphere | Warm-up time to 60% light (nom.) | 0.5 s |
| | | Power factor (nom.) | 0.9 |
| | | Voltage (Nom) | 60-120 V |
| Light Technical | | Temperature | |
| Colour Code | 841 [CCT of 4100K (841)] | T-ambient (max.) | 45 °C |
| Beam Angle (Nom) | 200 ° | T-ambient (min.) | -20 °C |
| Luminous flux (nom.) | 3900 lm | T storage (max.) | 65 °C |
| Colour designation | Cool White (CW) | T storage (min.) | -40 °C |
| Correlated Colour Temperature (Nom) | 4000 K | T-Case maximum (nom.) | 50 °C |
| Luminous efficacy (rated) (nom.) | 150.00 lm/W | | |
| Colour consistency | <6 | Mechanical and Housing | |
| Colour rendering index (nom.) | 80 | Lamp Finish | Frosted |
| LLMF at end of nominal lifetime (nom.) | 70 % | | |

MASTER LEDtube InstantFit HF T5

| | |
|------------------------------------|--|
| Bulb material | Glass |
| Product length | 1500 mm |
| Bulb shape | Tube, double-ended |
| Approval and Application | |
| Energy Efficiency Class | D |
| Energy-saving product | Yes |
| Approval marks | RoHS compliance CE marking KEMA Keur certificate |
| Energy consumption kWh/1,000 hours | 26 kWh 406213 |

| | |
|-----------------------------------|---|
| Product Data | |
| Full product code | 871869974959000 |
| Order product name | Master LEDtube HF 1500mm HO 26W 840 T5 OE |
| EAN/UPC – product | 8718699749590 |
| Order code | 74959000 |
| SAP numerator – quantity per pack | 1 |
| Numerator – packs per outer box | 10 |
| SAP material | 929002352402 |
| SAP net weight (piece) | 0.380 kg |

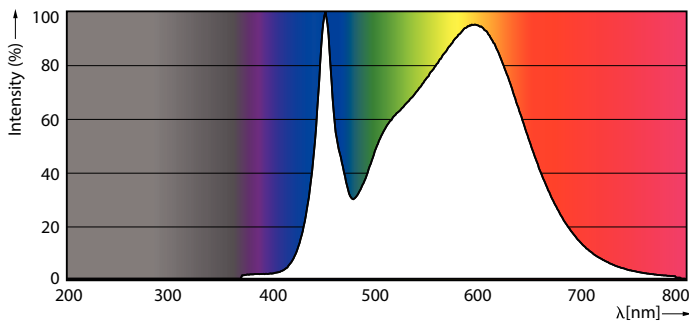
Dimensional drawing



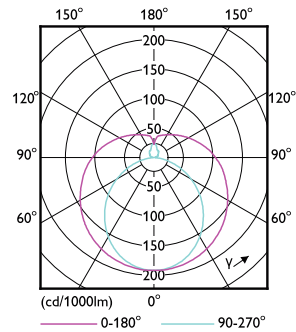
TLED 1500mm HF 26W 3900lm 4000K G5

| Product | D1 | D2 | A1 | A2 | A3 |
|--|---------|-------|---------|---------|---------|
| Master LEDtube HF 1500mm HO 26W 840 T5 OE | 15.5 mm | 19 mm | 1449 mm | 1456 mm | 1463 mm |

Photometric data



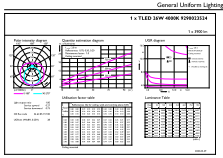
LEDtube MAS 26W G5 3900lm 840



LEDtube MAS 26W G5 3700lm

MASTER LEDtube InstantFit HF T5

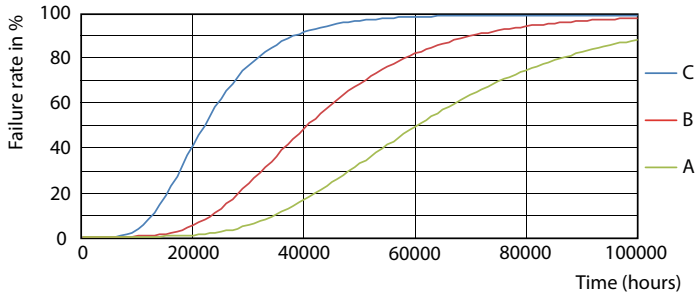
Photometric data



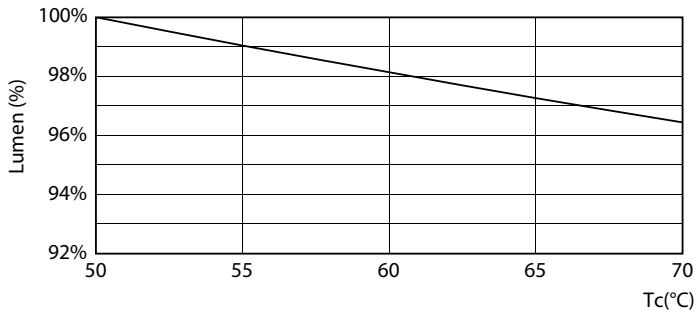
© 2021 Philips Lighting B.V. Page 10 of 11

LEDtube MAS 26W G5 3900lm 840 1500mm

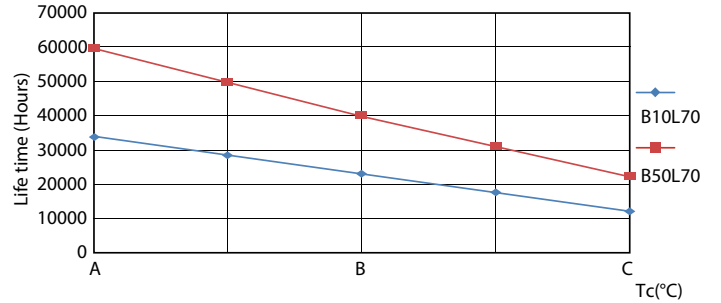
Lifetime



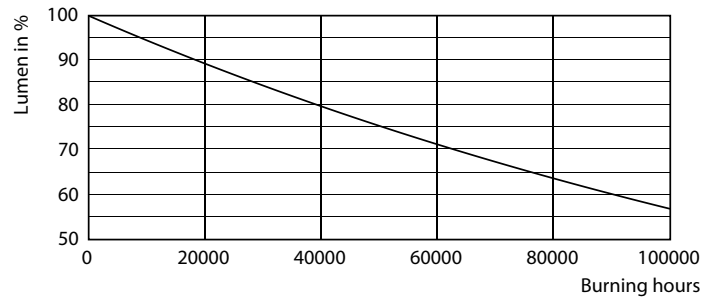
LEDtube_60K_FailureRate



LEDtube 26W 60K LumenVsTc 2



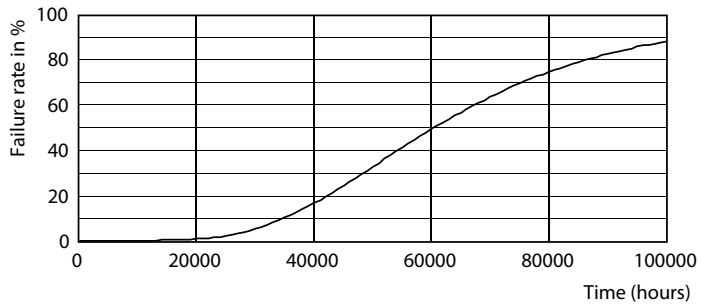
LEDtube_60K_LifetimeVsTc



LEDtube_60K

MASTER LEDtube InstantFit HF T5

Lifetime



LEDtube_60K

