



Master Value LEDtube T8

MASTER LEDtube VLE 1500mm HO 20.5W 840 T8

A high-performance LED solution, the professional Master Value LED tube is ideal for replacing T8 fluorescent lamps using EM ballast or installing directly on the mains. This product provides a uniform lighting effect for use in all general lighting, as well as instant energy-efficiency, making for an environmentally friendly solution.

Product data

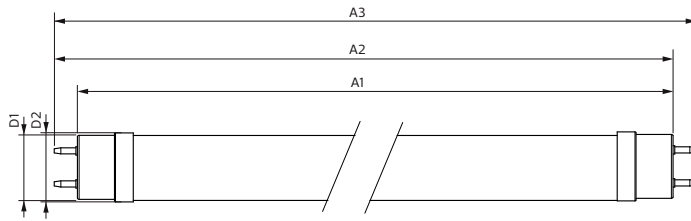
General Information		Power (Rated) (Nom)	
Cap base	G13 [Medium Bi-Pin Fluorescent]		20.5 W
EU RoHS compliant	Yes	Lamp current (max.)	97 mA
Nominal lifetime (nom.)	60000 h	Lamp current (min.)	89 mA
Switching cycle	200,000X	Starting time (nom.)	0.5 s
	Sphere	Warm-up time to 60% light (nom.)	0.5 s
		Power factor (nom.)	0.9
		Voltage (Nom)	220-240 V
Light Technical		Temperature	
Colour Code	841 [CCT of 4100K (841)]	T-ambient (max.)	45 °C
Beam Angle (Nom)	190 °	T-ambient (min.)	-20 °C
Luminous flux (nom.)	3100 lm	T storage (max.)	65 °C
Colour designation	Cool White (CW)	T storage (min.)	-40 °C
Correlated Colour Temperature (Nom)	4000 K	T-Case maximum (nom.)	65 °C
Luminous efficacy (rated) (nom.)	151.00 lm/W		
Colour consistency	<6	Controls and Dimming	
Colour rendering index (nom.)	80	Dimmable	No
LLMF at end of nominal lifetime (nom.)	70 %		
Operating and Electrical		Mechanical and Housing	
Input frequency	50 to 60 Hz	Lamp Finish	Frosted

Master Value LEDtube T8

Bulb material	Glass
Product length	1500 mm
Bulb shape	Tube, double-ended
Approval and Application	
Energy Efficiency Class	D
Energy-saving product	Yes
Approval marks	RoHS compliance CE marking KEMA Keur certificate
Energy consumption kWh/1,000 hours	21 kWh 403616

Product Data	
Full product code	871869964693600
Order product name	MASTER LEDtube VLE 1500mm HO 20.5W 840 T8
EAN/UPC – product	8718699646936
Order code	64693600
SAP numerator – quantity per pack	1
Numerator – packs per outer box	10
SAP material	929002021802
SAP net weight (piece)	0.270 kg

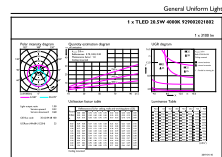
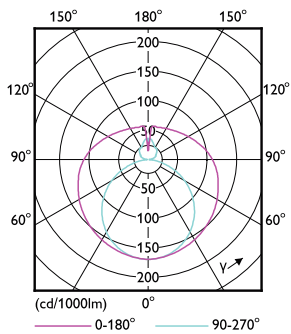
Dimensional drawing



Product	D1	D2	A1	A2	A3
MASTER LEDtube VLE 1500mm HO 20.5W 840 T8	25.8 mm	28 mm	1498.7 mm	1505.8 mm	1512.9 mm

TLED 5ft 220-240V 20.5-58W 3100lm 4000K G13

Photometric data

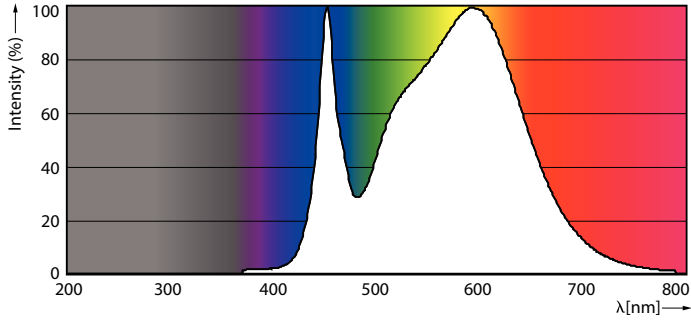


LEDtube 220-240V G13

LEDtube 220-240V G13 5ft 3100lm 4000k

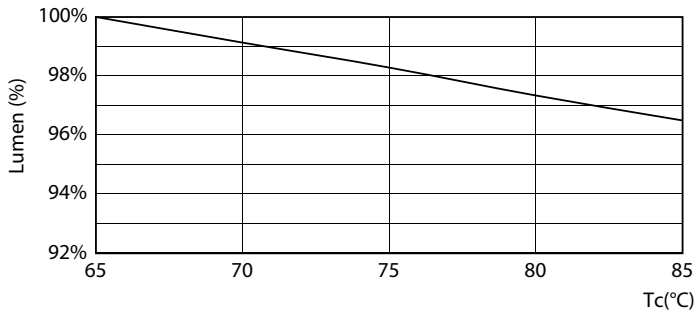
Master Value LEDtube T8

Photometric data

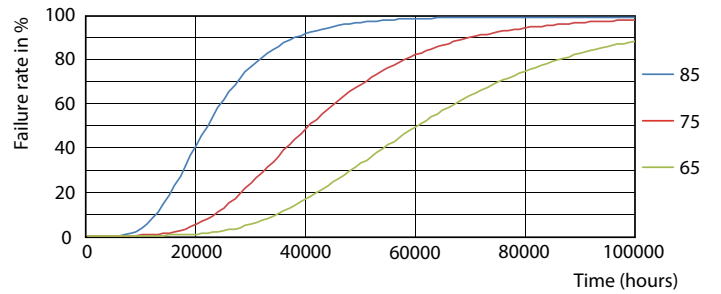


LEDtube 220-240V G13 4000k

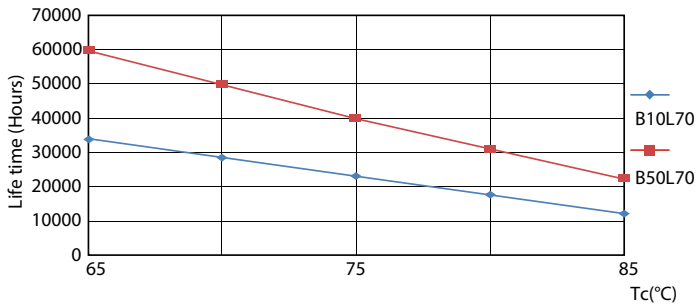
Lifetime



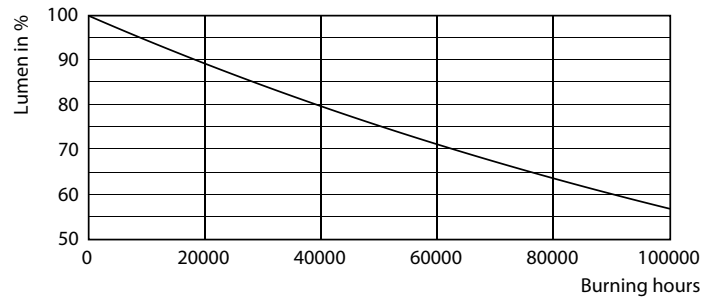
LEDtube MAS SLR 20,5W 60K LumenVsTc-LMP



LEDtube MAS SLR 20,5W 60K FailureRate-LED



LEDtube MAS SLR 20,5W 60K LifetimeVsTc-LED



LEDtube_60K

Master Value LEDtube T8

Lifetime



LEDtube_60K

