

# Master Value LEDtube T8



## MASTER LEDtube VLE 1500mm HO 20.5W 830 T8

A high-performance LED solution, the professional Master Value LED tube is ideal for replacing T8 fluorescent lamps using EM ballast or installing directly on the mains. This product provides a uniform lighting effect for use in all general lighting, as well as instant energy-efficiency, making for an environmentally friendly solution.

### Product data

General Information		Power (Rated) (Nom)	
Cap base	G13 [ Medium Bi-Pin Fluorescent]		20.5 W
EU RoHS compliant	Yes	Lamp current (max.)	97 mA
Nominal lifetime (nom.)	60000 h	Lamp current (min.)	89 mA
Switching cycle	200,000X	Starting time (nom.)	0.5 s
	Sphere	Warm-up time to 60% light (nom.)	0.5 s
		Power factor (nom.)	0.9
		Voltage (Nom)	220-240 V
Light Technical		Temperature	
Colour Code	830 [ CCT of 3,000 K]	T-ambient (max.)	45 °C
Beam Angle (Nom)	190 °	T-ambient (min.)	-20 °C
Luminous flux (nom.)	2900 lm	T storage (max.)	65 °C
Colour designation	White (WH)	T storage (min.)	-40 °C
Correlated Colour Temperature (Nom)	3000 K	T-Case maximum (nom.)	65 °C
Luminous efficacy (rated) (nom.)	141.00 lm/W		
Colour consistency	<6	Controls and Dimming	
Colour rendering index (nom.)	80	Dimmable	No
LLMF at end of nominal lifetime (nom.)	70 %		
Operating and Electrical		Mechanical and Housing	
Input frequency	50 to 60 Hz	Lamp Finish	Frosted

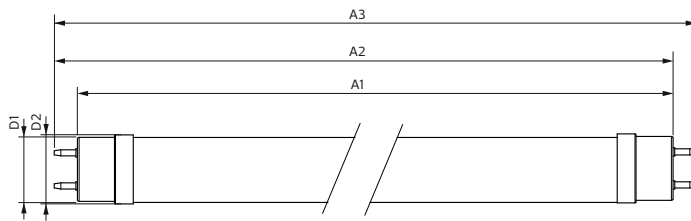
# Master Value LEDtube T8

<b>Bulb material</b>	Glass
<b>Product length</b>	1500 mm
<b>Bulb shape</b>	Tube, double-ended
<b>Approval and Application</b>	
<b>Energy Efficiency Class</b>	D
<b>Energy-saving product</b>	Yes
<b>Approval marks</b>	RoHS compliance CE marking KEMA Keur certificate
<b>Energy consumption kWh/1,000 hours</b>	21 kWh 403615

## Product Data

<b>Full product code</b>	871869964691200
<b>Order product name</b>	MASTER LEDtube VLE 1500mm HO 20.5W 830 T8
<b>EAN/UPC – product</b>	8718699646912
<b>Order code</b>	64691200
<b>SAP numerator – quantity per pack</b>	1
<b>Numerator – packs per outer box</b>	10
<b>SAP material</b>	929002021702
<b>SAP net weight (piece)</b>	0.270 kg

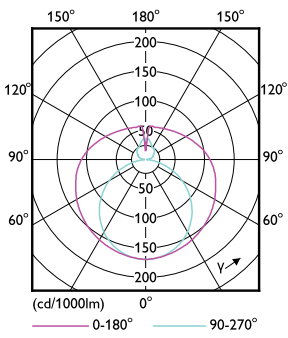
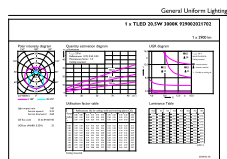
## Dimensional drawing



Product	D1	D2	A1	A2	A3
MASTER LEDtube VLE 1500mm HO 20.5W 830 T8	25.8 mm	28 mm	1498.7 mm	1505.8 mm	1512.9 mm

## TLED 5ft 220-240V20.5-58W2900lm3000K G13

## Photometric data

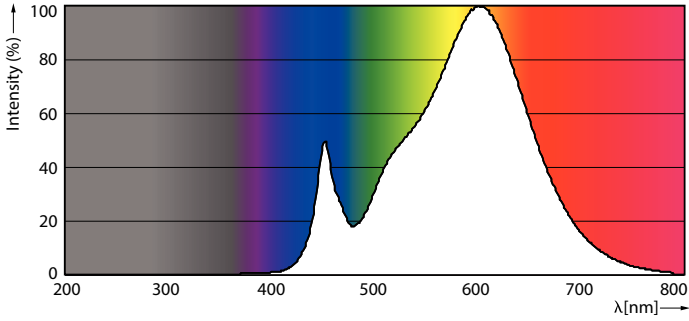


## LEDtube 220-240V G13 5ft 2900lm 3000k

## LEDtube 220-240V G13

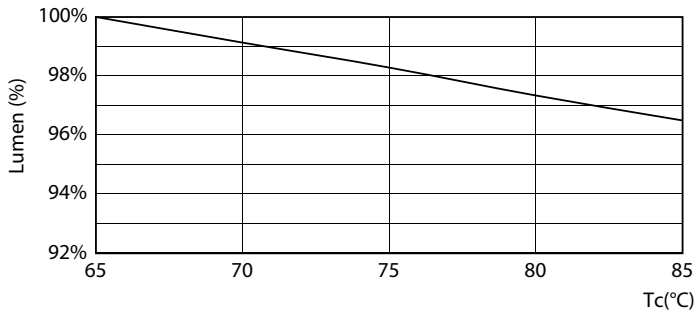
# Master Value LEDtube T8

## Photometric data

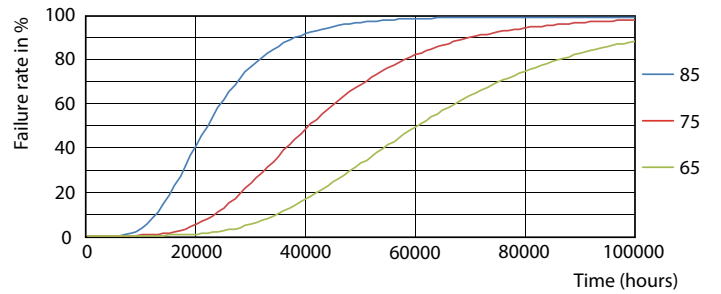


LEDtube 220-240V G13 3000k

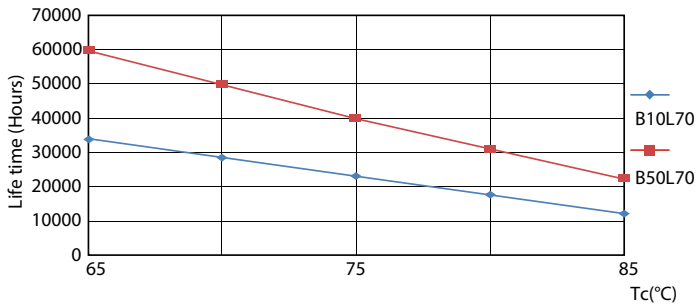
## Lifetime



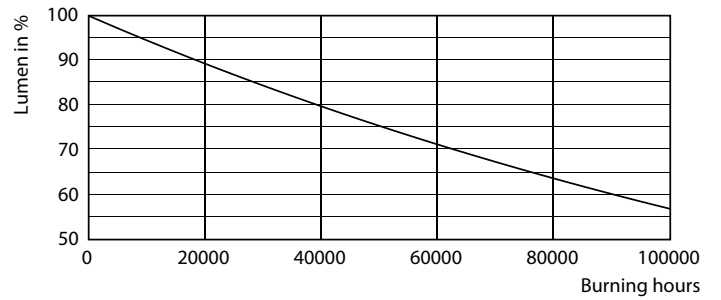
LEDtube MAS SLR 20,5W 60K LumenVsTc-LMP



LEDtube MAS SLR 20,5W 60K FailureRate-LED



LEDtube MAS SLR 20,5W 60K LifetimeVsTc-LED



LEDtube\_60K

# Master Value LEDtube T8

## Lifetime



LEDtube\_60K

