



# MASTER Value LEDtube T8

## MASTER LEDtube VLE 600mm HO 8W 865 T8

A high-performance LED solution, the professional MASTER Value LED tube is ideal for replacing T8 fluorescent lamps using EM ballast or installing directly on the mains. This product provides an optimal combination of value and performance – for use in all general lighting, office, industry, retail and hospitality applications. The unique design of this LED T8 tube light offers wide compatibility, safety and fast installation, as well as instant energy savings.

### Product data

| General information     |                                  |
|-------------------------|----------------------------------|
| Cap base                | G13 [ Medium Bi-Pin Fluorescent] |
| CE mark                 | Yes                              |
| EU RoHS compliant       | Yes                              |
| Nominal lifetime (nom.) | 60000 h                          |
| Switching cycle         | 200000                           |
|                         | Sphere                           |
| Tier                    | MASTER Value                     |

| Light technical                     |                       |
|-------------------------------------|-----------------------|
| Colour Code                         | 865 [ CCT of 6,500 K] |
| Beam Angle (Nom)                    | 190 °                 |
| Luminous flux (nom.)                | 1050 lm               |
| Colour designation                  | Cool Daylight         |
| Correlated Colour Temperature (Nom) | 6500 K                |
| Luminous efficacy (rated) (nom.)    | 131 lm/W              |
| Colour consistency                  | <6                    |
| Colour rendering index (nom.)       | 80                    |

|   |  |
|---|--|
| LLMF at end of nominal lifetime (nom.) 70 % |  |
|---|--|

| Operating and electrical         |             |
|----------------------------------|-------------|
| Input frequency                  | 50 to 60 Hz |
| Power (Rated) (Nom)              | 8 W         |
| Lamp current (max.)              | 38 mA       |
| Lamp current (min.)              | 34 mA       |
| Starting time (nom.)             | 0.5 s       |
| Warm-up time to 60% light (nom.) | 0.5 s       |
| Power factor (nom.)              | 0.9         |
| Voltage (Nom)                    | 220–240 V   |

| Temperature           |        |
|-----------------------|--------|
| T-ambient (max.)      | 45 °C  |
| T-ambient (min.)      | -20 °C |
| T storage (max.)      | 65 °C  |
| T storage (min.)      | -40 °C |
| T-Case maximum (nom.) | 55 °C  |

# MASTER Value LEDtube T8

## Controls and dimming

|          |    |
|----------|----|
| Dimmable | No |
|----------|----|

## Mechanical and housing

|                |                    |
|----------------|--------------------|
| Lamp Finish    | Frosted            |
| Bulb material  | Glass              |
| Product length | 600 mm             |
| Bulb shape     | Tube, double-ended |

## Approval and application

|                         |  |
|-------------------------|--|
| Energy Efficiency Class | E  |
| Energy-saving product   | Yes  |
| Approval marks          | RoHS compliance TUV CE marking KEMA Keur certificate |

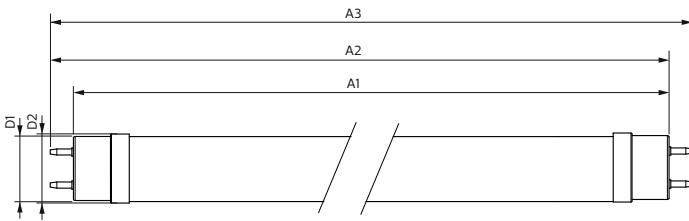
Energy consumption kWh/1,000 hours 8 kWh

1095864

## Product data

|                                   |                                       |
|-----------------------------------|---------------------------------------|
| Full product code                 | 871869964683700                       |
| Order product name                | MASTER LEDtube VLE 600mm HO 8W 865 T8 |
| EAN/UPC – product                 | 8718699646837                         |
| Order code                        | 64683700                              |
| SAP numerator – quantity per pack | 1                                     |
| Numerator – packs per outer box   | 10                                    |
| SAP material                      | 929002021302                          |
| Net Weight (Piece)                | 0.110 kg                              |

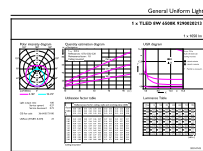
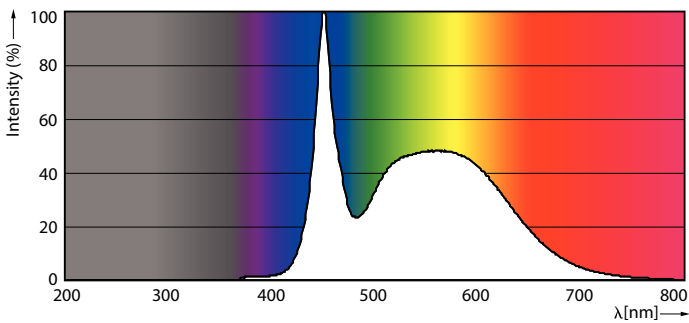
## Dimensional drawing



| Product                                  | D1      | D2    | A1       | A2       | A3       |
|--|---------|-------|----------|----------|----------|
| MASTER LEDtube VLE<br>600mm HO 8W 865 T8 | 25.8 mm | 28 mm | 588.5 mm | 595.5 mm | 602.5 mm |

## MASTER LEDtube VLE 600mm HO 8W 865 T8

## Photometric data



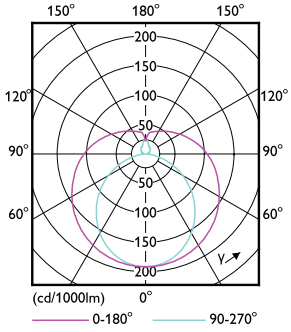
OSRAM ROADWORKER LED Lighting BV Page 1/1

## LEDtube 220-240V G13 6500k

## LEDtube MAS SLR 8W G13 1050lm 865-GUL

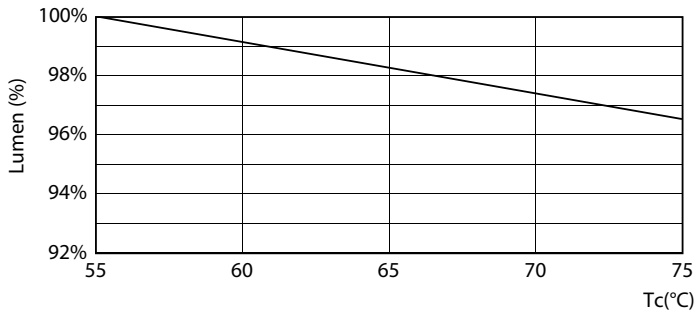
# MASTER Value LEDtube T8

## Photometric data

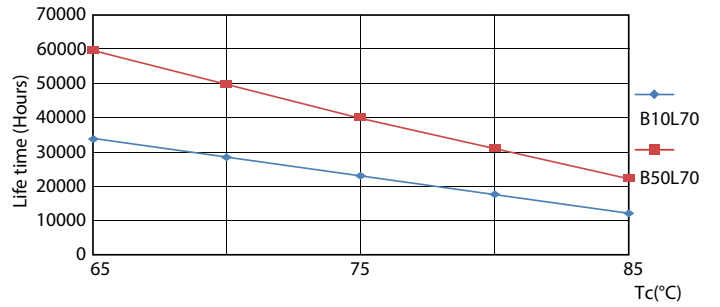


Light Distribution Diagram

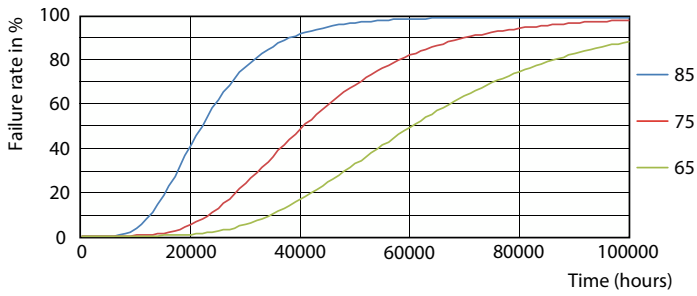
## Lifetime



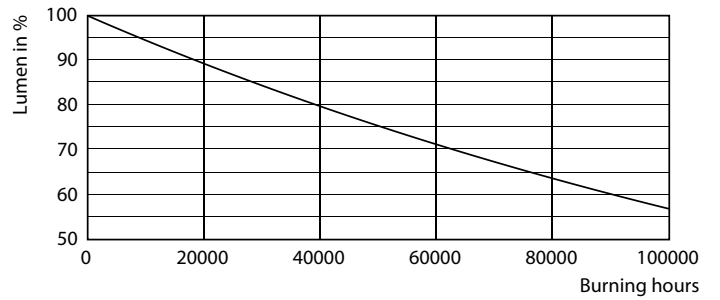
LumenVsTc



LifetimeVsTc



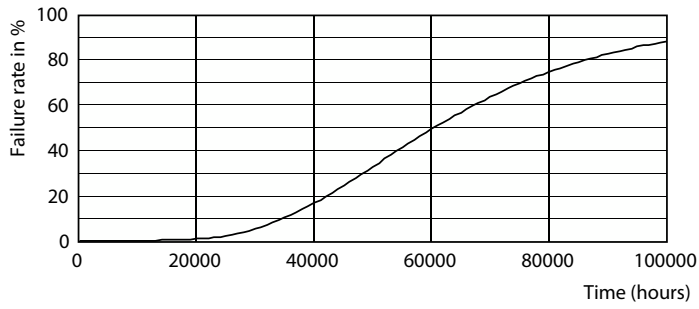
FailureRate



Lumen Maintenance Diagram

# MASTER Value LEDtube T8

## Lifetime



### Life Expectancy Diagram

