



MASTER LEDtube EM/ Mains

MASTER LEDtube 1200mm HO 12.5W 840 T8

The Philips MASTER LEDtube integrates a LED light source into a traditional fluorescent form factor. Its unique design creates a perfectly uniform visual appearance which cannot be distinguished from traditional fluorescent. For those that are looking for value for money within limited budget and re-lamping efforts for better light effect and lifetime.

Warnings and Safety

• -

Product data

General Information	
Cap base	G13 ROT (Rotating) [Medium Bi-Pin Fluorescent]
EU RoHS compliant	Yes
Nominal lifetime (nom.)	70000 h
Switching cycle	200,000X Sphere
Light Technical	
Colour Code	841 [CCT of 4100K (841)]
Beam Angle (Nom)	160 °
Luminous flux (nom.)	2100 lm
Colour designation	Cool White (CW)
Correlated Colour Temperature (Nom)	4000 K
Luminous efficacy (rated) (nom.)	168.00 lm/W
Colour consistency	<6
Colour rendering index (nom.)	80

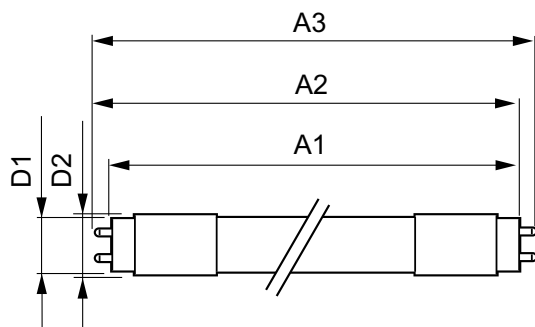
LLMF at end of nominal lifetime (nom.) 70 %	
Operating and Electrical	
Input frequency	50 to 60 Hz
Power (Rated) (Nom)	12.5 W
Lamp current (max.)	63 mA
Lamp current (min.)	52 mA
Starting time (nom.)	0.5 s
Warm-up time to 60% light (nom.)	0.5 s
Power factor (nom.)	0.9
Voltage (Nom)	220-240 V
Temperature	
T-ambient (max.)	45 °C
T-ambient (min.)	-20 °C
T storage (max.)	65 °C
T storage (min.)	-40 °C

MASTER LEDtube EM/Mains

T-Case maximum (nom.)	50 °C
Controls and Dimming	
Dimmable	No
Mechanical and Housing	
Lamp Finish	Frosted
Bulb material	Plastic
Product length	1200 mm
Bulb shape	Tube, double-ended
Approval and Application	
Energy Efficiency Class	C
Energy-saving product	Yes
Approval marks	RoHS compliance CE marking KEMA Keur certificate

Energy consumption kWh/1,000 hours	13 kWh
	403591
Product Data	
Full product code	871869959237000
Order product name	MASTER LEDtube 1200mm HO 12.5W 840 T8
EAN/UPC – product	8718699592370
Order code	59237000
SAP numerator – quantity per pack	1
Numerator – packs per outer box	10
SAP material	929001922702
SAP net weight (piece)	0.270 kg

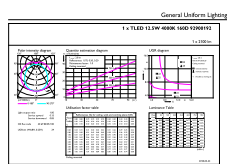
Dimensional drawing



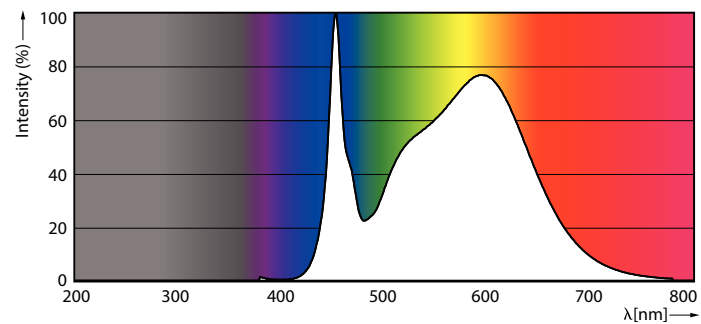
TLED master HE 2100lm 12.35w 4ft 4000k

Product	D1	D2	A1	A2	A3
MASTER LEDtube 1200mm HO 12.5W 840 T8	25.8 mm	28 mm	1198.2 mm	1205.3 mm	1212.4 mm

Photometric data



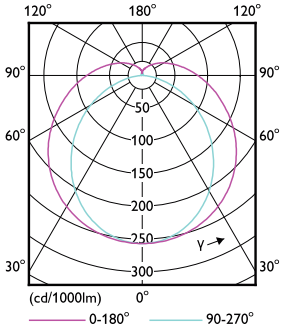
LEDtube MAS HO 12.5W G13 840 16D ND



LEDtube MAS SLR 12,5W G13 2100lm 840-POC-POC

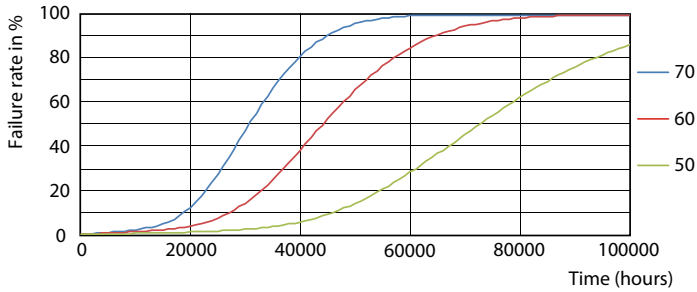
MASTER LEDtube EM/Mains

Photometric data

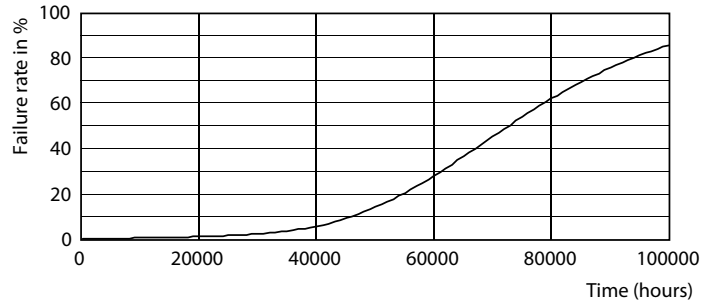


LEDtube MAS HO 12.5W G13 830 16D ND

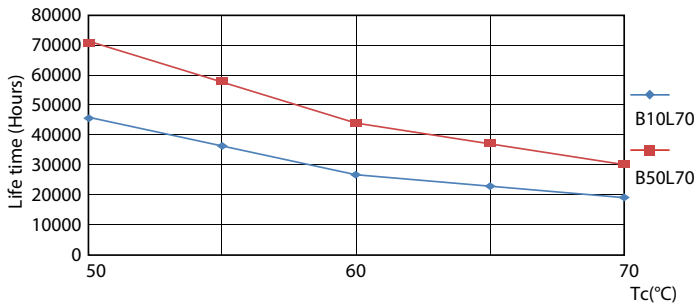
Lifetime



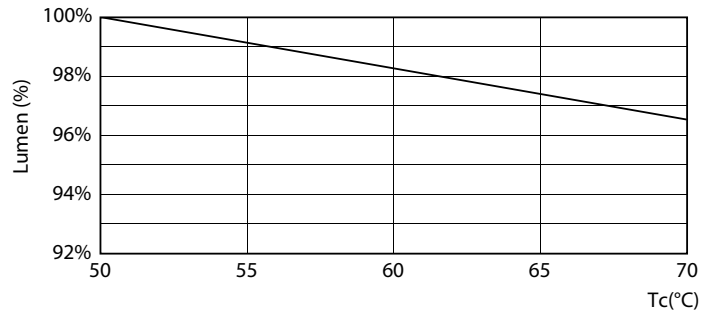
LEDtube MAS SLR 12,5W 70K FailureRate-LED-LED



LEDtube_70K-LED



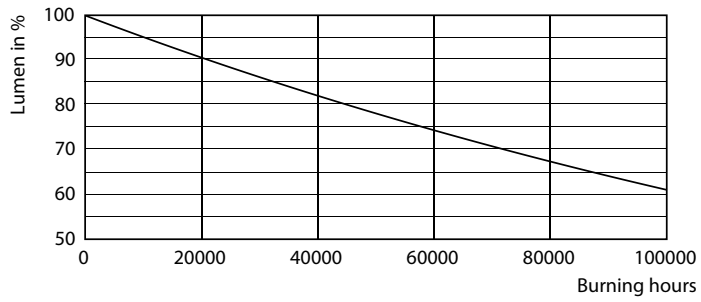
LEDtube MAS SLR 12,5W 70K LifetimeVsTc-LED-LED



LEDtube MAS SLR 12,5W 70K LumenVsTc-LMP-LMP

MASTER LEDtube EM/Mains

Lifetime



LEDtube_70K-LMP

