



# MASTER LEDtube EM/ Mains

## MASTER LEDtube 600mm HO VWV 10W 865 T8

The Philips MASTER LEDtube integrates a LED light source into a traditional fluorescent form factor. Its unique design creates a perfectly uniform visual appearance which cannot be distinguished from traditional fluorescent. For those that are looking for value for money within limited budget and re-lamping efforts for better light effect and lifetime.

### Warnings and Safety

• -

### Product data

General information	
Cap base	G13 [ Medium Bi-Pin Fluorescent]
EU RoHS compliant	Yes
Nominal lifetime (nom.)	60000 h
Switching cycle	200000

Light technical	
Colour Code	865 [ CCT of 6,500 K]
Beam Angle (Nom)	160 °
Luminous flux (nom.)	1050 lm
Colour designation	Cool Daylight
Correlated Colour Temperature (Nom)	6500 K
Luminous efficacy (rated) (nom.)	105.00 lm/W
Colour consistency	<6
Colour rendering index (nom.)	80
LLMF at end of nominal lifetime (nom.)	70 %

Operating and electrical	
Input frequency	50 to 60 Hz
Power (Rated) (Nom)	10 W
Lamp current (max.)	101 mA
Lamp current (min.)	38 mA
Starting time (nom.)	0.5 s
Warm-up time to 60% light (nom.)	0.5 s
Power factor (nom.)	0.90
Voltage (Nom)	100-277 V

Temperature	
T-ambient (max.)	45 °C
T-ambient (min.)	-20 °C
T storage (max.)	65 °C
T storage (min.)	-40 °C
T-Case maximum (nom.)	60 °C

# MASTER LEDtube EM/Mains

## Controls and dimming

Dimmable No

## Mechanical and housing

Lamp Finish Frosted  
 Product length 600 mm  
 Bulb shape Tube, single-ended

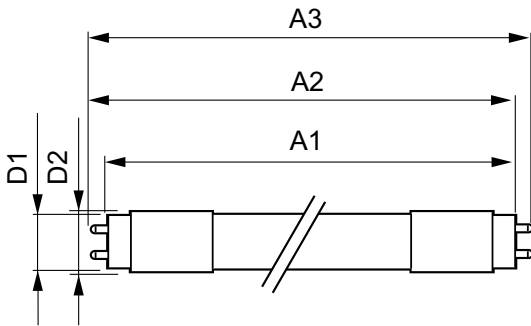
## Approval and application

Energy-saving product Yes  
 Approval marks RoHS compliance CE marking UL certificate  
 KEMA Keur certificate  
 Energy consumption kWh/1,000 hours 10 kWh

## Product data

Full product code 871869681127600  
 Order product name MASTER LEDtube 600mm HO VWV 10W 865 T8  
 EAN/UPC – product 8718696811276  
 Order code 81127600  
 SAP numerator – quantity per pack 1  
 Numerator – packs per outer box 10  
 SAP material 929001877612  
 Net Weight (Piece) 0.115 kg

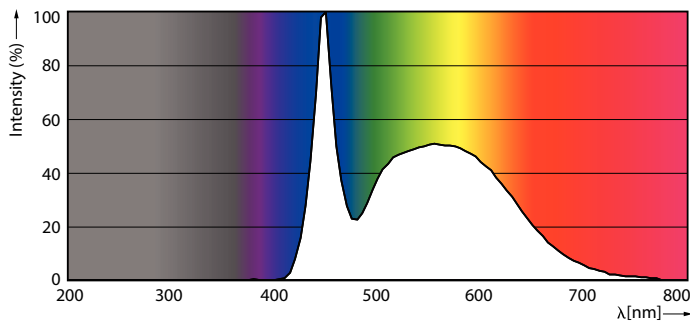
## Dimensional drawing



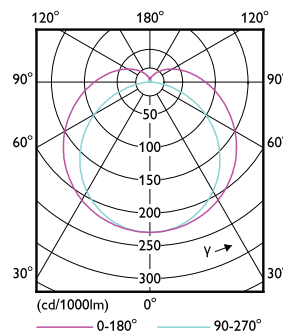
MASTER LEDtube 600mm HO VWV 10W 865 T8

Product	D1	D2	A1	A2	A3
MASTER LEDtube 600mm HO VWV 10W 865 T8	25.8 mm	28 mm	588.6 mm	595.6 mm	602.6 mm

## Photometric data



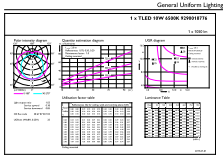
LEDtube\_10W\_G13\_1050lm\_865



LEDtube\_G13\_2

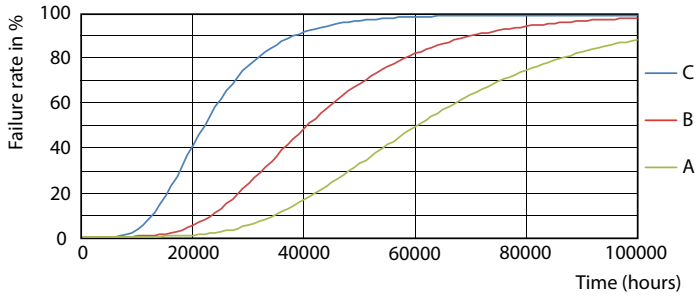
# MASTER LEDtube EM/Mains

## Photometric data

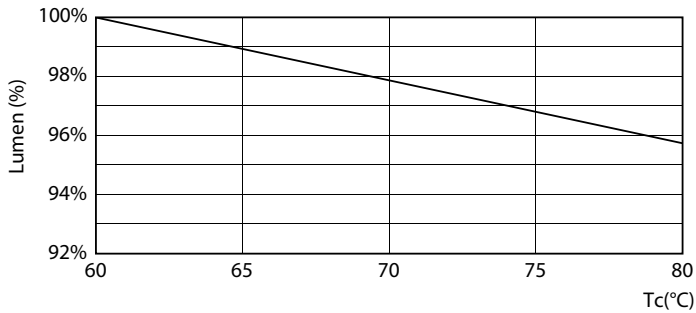


LEDtube\_10W\_G13\_1050lm\_865

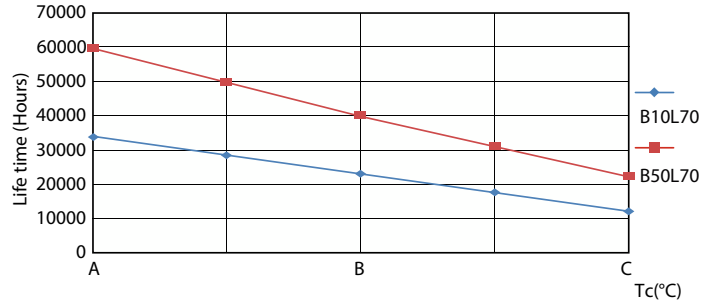
## Lifetime



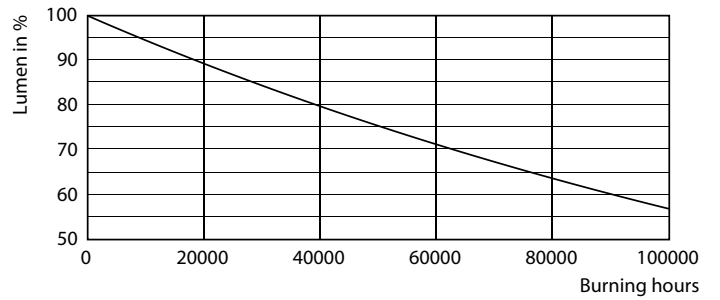
FailureRate



LEDtube\_60K\_LumenVsTc



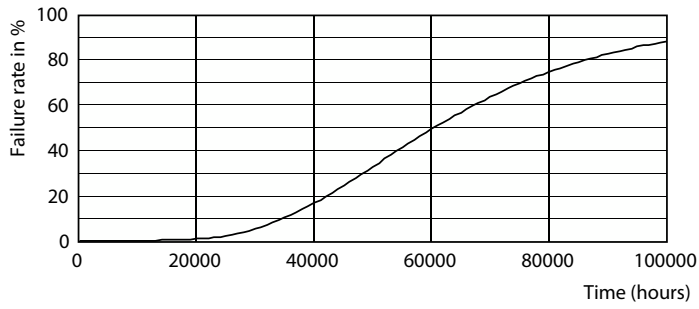
LifetimeVsTc



Lumen Maintenance Diagram

# MASTER LEDtube EM/Mains

## Lifetime



### Life Expectancy Diagram

