

# MASTER LEDtube EM/ Mains

## MASTER LEDtube 1200mm HO VWV 18W 840 T8

The Philips MASTER LEDtube integrates a LED light source into a traditional fluorescent form factor. Its unique design creates a perfectly uniform visual appearance which cannot be distinguished from traditional fluorescent. For those that are looking for value for money within limited budget and re-lamping efforts for better light effect and lifetime.

### Warnings and Safety

• -

### Product data

General information	
Cap base	G13 [ Medium Bi-Pin Fluorescent]
EU RoHS compliant	Yes
Nominal lifetime (nom.)	60000 h
Switching cycle	200,000X
Technical type	18-32-36W
Light technical	
Colour Code	841 [ CCT of 4100K (841)]
Beam Angle (Nom)	160 °
Luminous flux (nom.)	2100 lm
Colour designation	Cool White (CW)
Correlated Colour Temperature (Nom)	4000 K
Luminous efficacy (rated) (nom.)	116.00 lm/W
Colour consistency	<6
Colour rendering index (nom.)	80

LLMF at end of nominal lifetime (nom.) 70 %	
Operating and electrical	
Input frequency	50 to 60 Hz
Power (Rated) (Nom)	18 W
Lamp current (max.)	183 mA
Lamp current (min.)	69 mA
Starting time (nom.)	0.5 s
Warm-up time to 60% light (nom.)	0.5 s
Power factor (nom.)	0.90
Voltage (Nom)	100-277 V
Temperature	
T-ambient (max.)	45 °C
T-ambient (min.)	-20 °C
T storage (max.)	65 °C
T storage (min.)	-40 °C

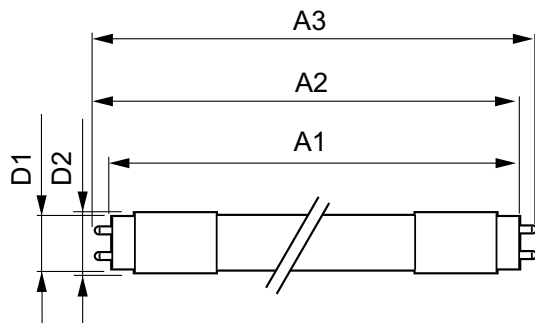
# MASTER LEDtube EM/Mains

T-Case maximum (nom.)	60 °C
<b>Controls and dimming</b>	
Dimmable	No
<b>Mechanical and housing</b>	
Product length	1200 mm
Bulb shape	Tube, single-ended
<b>Approval and application</b>	
Energy-saving product	Yes
Approval marks	RoHS compliance CE marking UL certificate KEMA Keur certificate
Energy consumption kWh/1,000 hours	18 kWh

## Product data

Full product code	87186968119100
Order product name	MASTER LEDtube 1200mm HO VWV 18W 840 T8
EAN/UPC – product	871869681191
Order code	8119100
SAP numerator – quantity per pack	1
Numerator – packs per outer box	10
SAP material	929001877312
Copy Net Weight (Piece)	0.220 kg

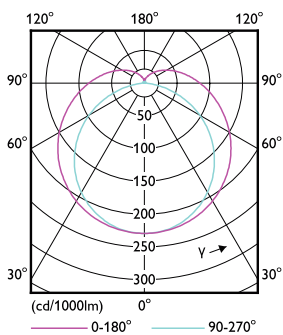
## Dimensional drawing



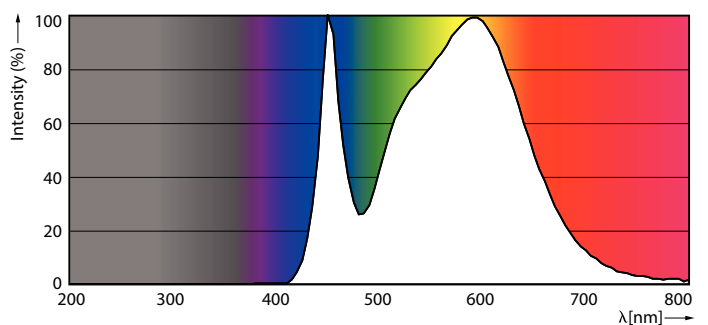
MASTER LEDtube 1200mm HO VWV 18W 840 T8

Product	D1	D2	A1	A2	A3
MASTER LEDtube 1200mm HO VWV 18W 840 T8	25.8 mm	28 mm	1198.2 mm	1205.3 mm	1212.4 mm

## Photometric data



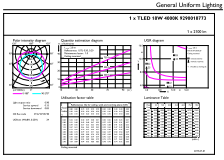
LEDtube\_G13\_2



LEDtube\_18W\_G13\_2100lm\_840

# MASTER LEDtube EM/Mains

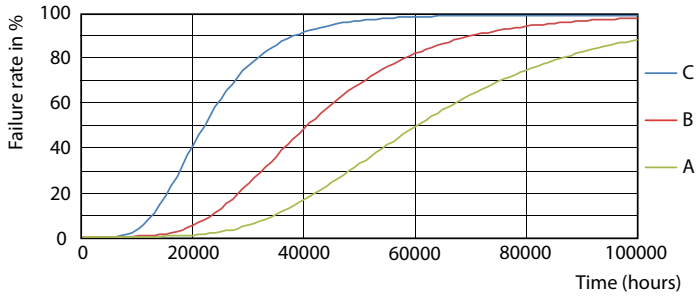
## Photometric data



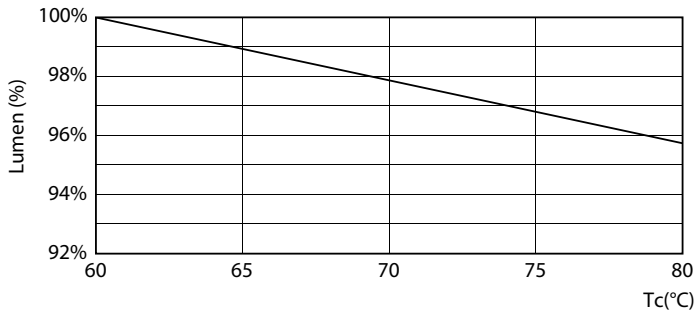
© 2022 Philips Lighting B.V. Page 10

LEDtube\_18W\_G13\_2100lm\_840\_1

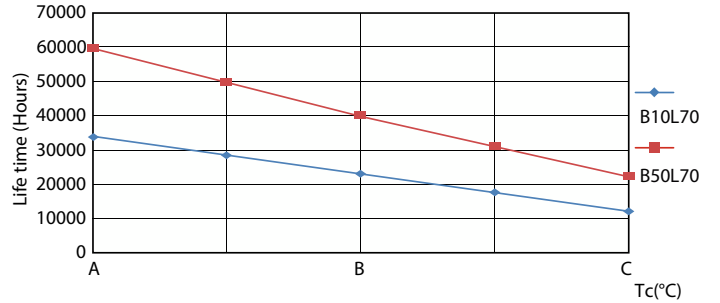
## Lifetime



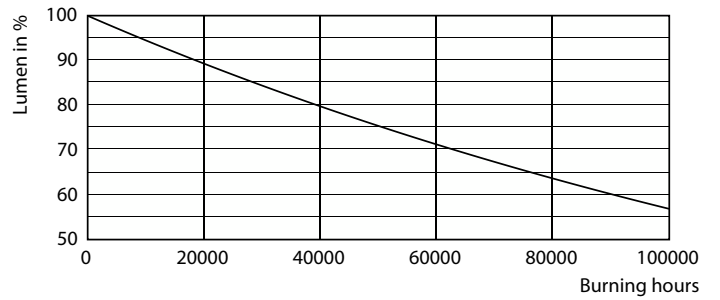
FailureRate



LEDtube\_60K\_LumenVsTc



LifetimeVsTc



Lumen Maintenance Diagram

# MASTER LEDtube EM/Mains

## Lifetime



### Life Expectancy Diagram

