



MASTER LEDtube InstantFit HF T5

Master LEDtube HF 1200mm HE 16.5W 865 T5

The Philips MASTER LEDtube integrates an LED light source into a traditional fluorescent form factor. Its unique design creates a perfectly uniform visual appearance, which cannot be distinguished from traditional fluorescents. These T5 lighting tubes are the right choice for absolute performance and are designed to stand up to everyday conditions. Unparalleled savings, thanks to low energy consumption and an exceptionally long lifetime, make these T5 LED tubes the choice for every demanding applications.

Product data

| General information | |
|-------------------------|----------|
| Cap base | G5 [G5] |
| CE mark | Yes |
| EU RoHS compliant | Yes |
| Nominal lifetime (nom.) | 60000 h |
| Switching cycle | 50000 |
| | Sphere |
| Tier | MASTER |

| Light technical | |
|-------------------------------------|-----------------------|
| Colour Code | 865 [CCT of 6,500 K] |
| Beam Angle (Nom) | 200 ° |
| Luminous flux (nom.) | 2500 lm |
| Colour designation | Cool Daylight |
| Correlated Colour Temperature (Nom) | 6500 K |
| Luminous efficacy (rated) (nom.) | 151 lm/W |
| Colour consistency | <6 |
| Colour rendering index (nom.) | 80 |

| | |
|---|--|
| LLMF at end of nominal lifetime (nom.) 70 % | |
|---|--|

| Operating and electrical | |
|----------------------------------|------------------|
| Input frequency | 30 K to 100 K Hz |
| Power (Rated) (Nom) | 16.5 W |
| Lamp current (max.) | 350 mA |
| Lamp current (min.) | 150 mA |
| Starting time (nom.) | 0.5 s |
| Warm-up time to 60% light (nom.) | 0.5 s |
| Power factor (nom.) | 0.92 |
| Voltage (Nom) | 70-120 V |

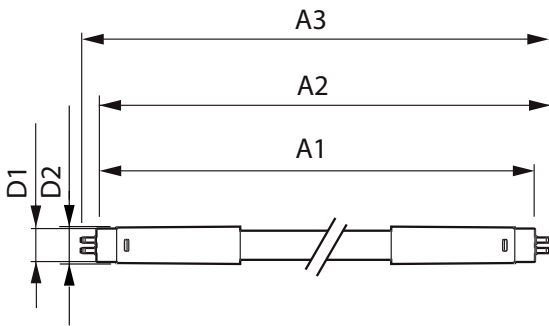
| Temperature | |
|------------------|--------|
| T-ambient (max.) | 45 °C |
| T-ambient (min.) | -20 °C |
| T storage (max.) | 65 °C |
| T storage (min.) | -40 °C |

MASTER LEDtube InstantFit HF T5

| | |
|---------------------------------|--|
| T-Case maximum (nom.) | 65 °C |
| Controls and dimming | |
| Dimmable | Yes – Check ballast compatibility |
| Mechanical and housing | |
| Lamp Finish | Frosted |
| Bulb material | Glass |
| Product length | 1200 mm |
| Bulb shape | Tube, double-ended |
| Approval and application | |
| Energy Efficiency Class | D |
| Energy-saving product | Yes |
| Approval marks | RoHS compliance TUV CE marking KEMA Keur certificate |

| | |
|------------------------------------|--|
| Energy consumption kWh/1,000 hours | 17 kWh |
| | 406188 |
| Product data | |
| Full product code | 871869674333100 |
| Order product name | Master LEDtube HF 1200mm HE 16.5W 865 T5 |
| EAN/UPC – product | 8718696743331 |
| Order code | 74333100 |
| SAP numerator – quantity per pack | 1 |
| Numerator – packs per outer box | 10 |
| SAP material | 929001391202 |
| Net Weight (Piece) | 0.160 kg |

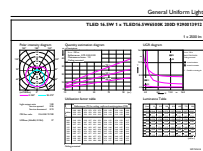
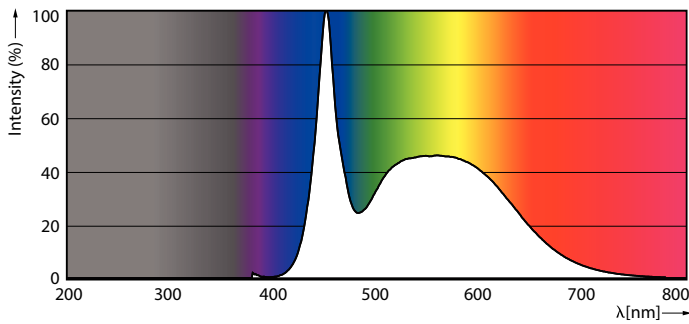
Dimensional drawing



Master LEDtube HF 1200mm HE 16.5W 865 T5

| Product | D1 | D2 | A1 | A2 | A3 |
|--|---------|---------|---------|-----------|-----------|
| Master LEDtube HF 1200mm HE 16.5W 865 T5 | 15.5 mm | 18.8 mm | 1149 mm | 1156.1 mm | 1163.2 mm |

Photometric data



LEDtubes, TLED T12 120-277V 20W 6500K G13

LEDtube 1200mm 16-5W G5 865 2500lm

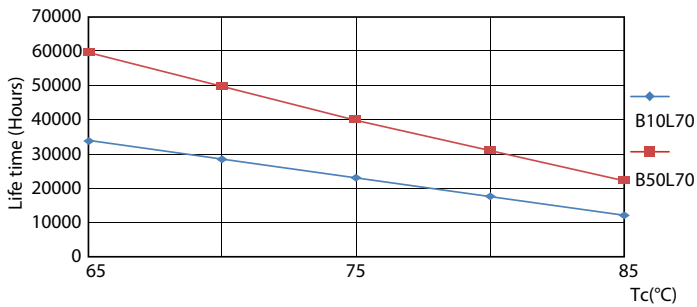
MASTER LEDtube InstantFit HF T5

Photometric data

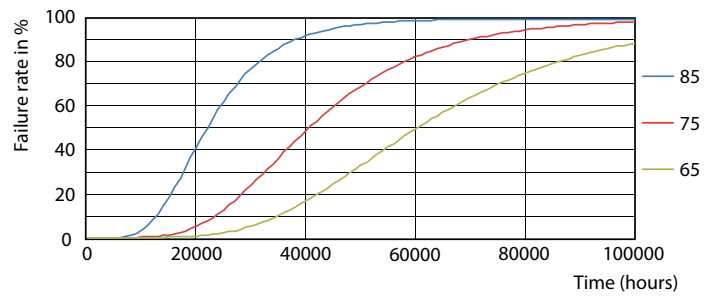


LEDtube 600mm 8W G5 830 1000lm

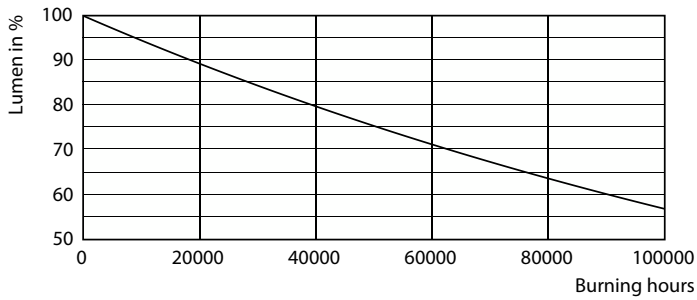
Lifetime



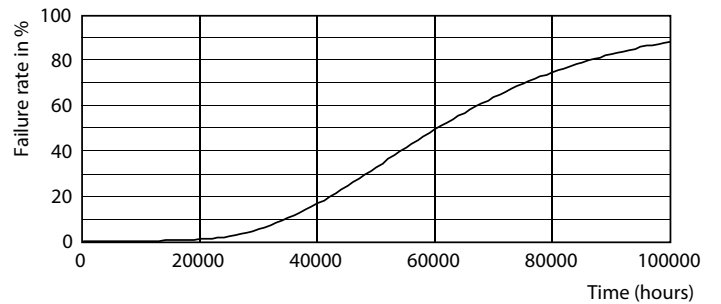
LifetimeVsTc



FailureRate



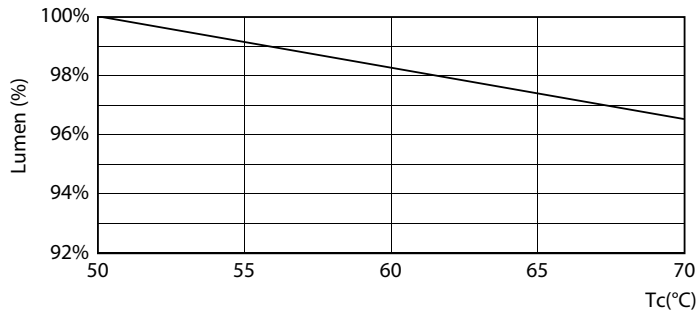
Lumen Maintenance Diagram



Life Expectancy Diagram

MASTER LEDtube InstantFit HF T5

Lifetime



LEDtube MAS SLR 16,5W 60K LumenVsTc-LMP

