



MASTER LEDtube InstantFit HF T5

Master LEDtube HF 1200mm HE 16.5W 830 T5

Philips MASTER LEDtube InstantFit T5 integrates a LED light source into a traditional fluorescent form factor. Its unique design creates a perfectly uniform visual appearance which cannot be distinguished from traditional fluorescents. The Philips MASTER LEDtube InstantFit T5 is the ideal solution for customers who have higher light output requirements and want to maximise value over the lifetime. The full energy savings & longer lifetime result in attractive payback times and TCO benefits.

Product data

General Information	
Cap base	G5 [G5]
EU RoHS compliant	Yes
Nominal lifetime (nom.)	60000 h
Switching cycle	50,000X
	Sphere

Light Technical	
Colour Code	830 [CCT of 3,000 K]
Beam Angle (Nom)	200 °
Luminous flux (nom.)	2300 lm
Colour designation	White (WH)
Correlated Colour Temperature (Nom)	3000 K
Luminous efficacy (rated) (nom.)	139.00 lm/W
Colour consistency	<6
Colour rendering index (nom.)	80
LLMF at end of nominal lifetime (nom.)	70 %

Operating and Electrical	
Power (Rated) (Nom)	16.5 W
Lamp current (max.)	350 mA
Lamp current (min.)	150 mA
Starting time (nom.)	0.5 s
Warm-up time to 60% light (nom.)	0.5 s
Power factor (nom.)	0.92
Voltage (Nom)	70-120 V

Temperature	
T-ambient (max.)	45 °C
T-ambient (min.)	-20 °C
T storage (max.)	65 °C
T storage (min.)	-40 °C
T-Case maximum (nom.)	65 °C

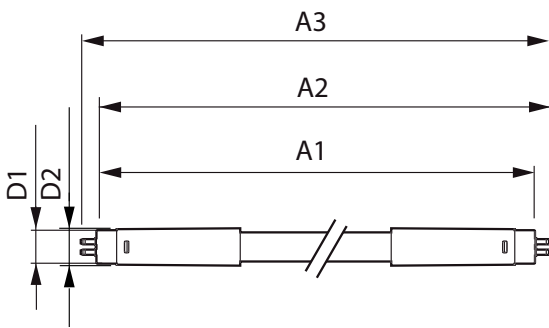
Mechanical and Housing	
Lamp Finish	Frosted
Bulb material	Glass

MASTER LEDtube InstantFit HF T5

Product length	1200 mm
Bulb shape	Tube, double-ended
Approval and Application	
Energy Efficiency Class	E
Energy-saving product	Yes
Approval marks	RoHS compliance CE marking KEMA Keur certificate
Energy consumption kWh/1,000 hours	17 kWh 406186

Product Data	
Full product code	871869674329400
Order product name	Master LEDtube HF 1200mm HE 16.5W 830 T5
EAN/UPC – product	8718696743294
Order code	74329400
SAP numerator – quantity per pack	1
Numerator – packs per outer box	10
SAP material	929001391002
SAP net weight (piece)	0.159 kg

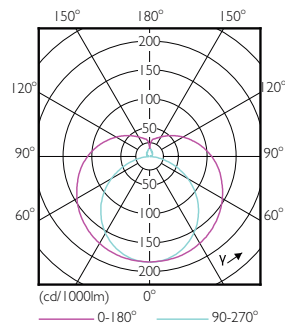
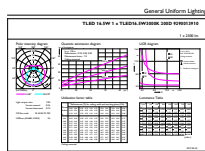
Dimensional drawing



TLED 1200mm 230V14W-28W 2100lm 160D 300

Product	D1	D2	A1	A2	A3
Master LEDtube HF 1200mm HE 16.5W 830 T5	15.5 mm	18.8 mm	1149 mm	1156.1 mm	1163.2 mm

Photometric data

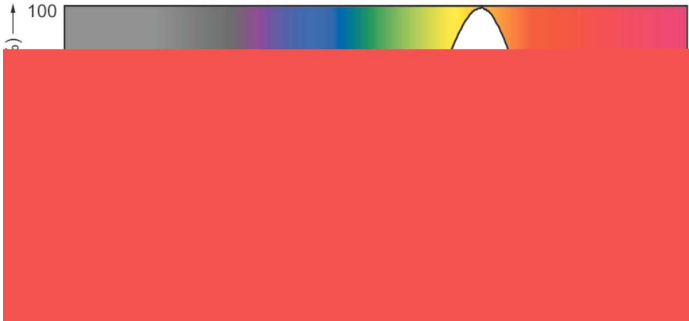


LEDtube 1200mm 16-5W G5 830 2300lm

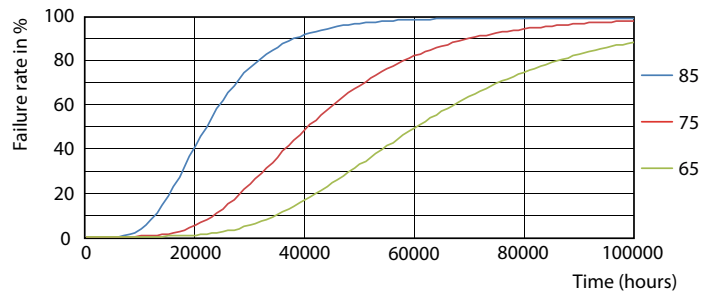
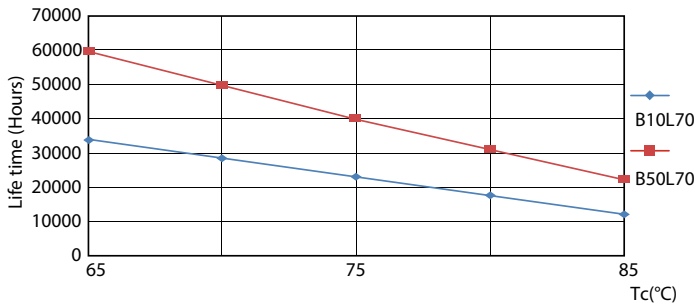
LEDtube 600mm 8W G5 830 1000lm

MASTER LEDtube InstantFit HF T5

Photometric data

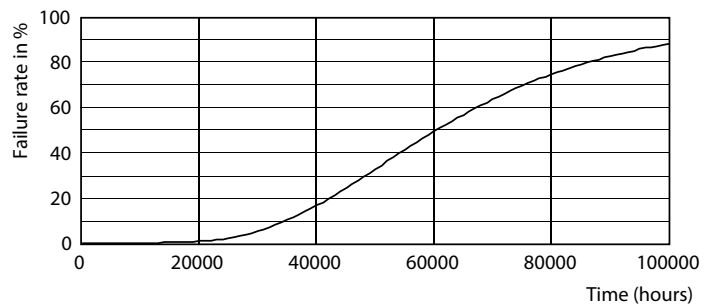
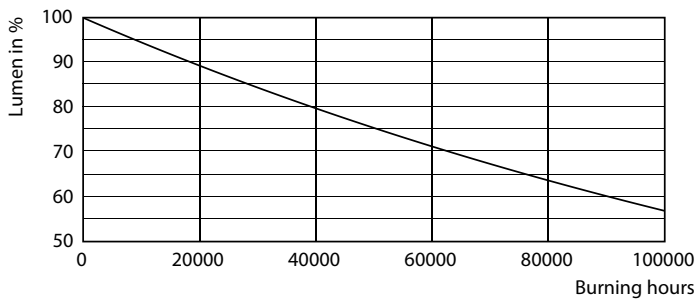


Lifetime



LEDtube MAS SLR 8W 60K LifetimeVsTc-LED

LEDtube MAS SLR 8W 60K FailureRate-LED

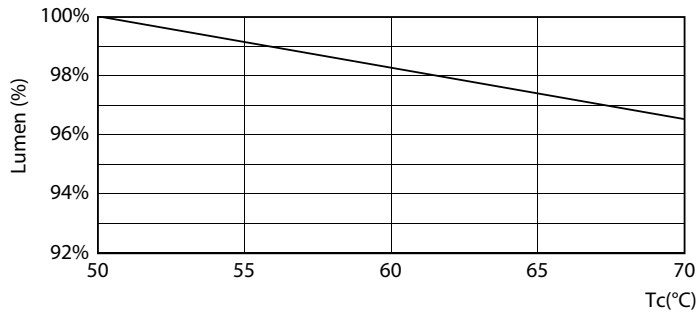


LEDtube_60K

LEDtube_60K

MASTER LEDtube InstantFit HF T5

Lifetime



LEDtube MAS SLR 16,5W 60K LumenVsTc-LMP

