



# MASTER LEDtube EM/ Mains

## MASTER LEDtube 1500mm UE 21.5W 840 T8

The Philips MASTER LEDtube integrates a LED light source into a traditional fluorescent form factor. Its unique design creates a perfectly uniform visual appearance which cannot be distinguished from traditional fluorescent. For those that are looking for value for money within limited budget and re-lamping efforts for better light effect and lifetime.

### Warnings and Safety

• -

### Product data

| General Information     |  |
|-------------------------|--|
| Cap base                | G13 ROT (Rotating) [ Medium Bi-Pin<br>Fluorescent] |
| EU RoHS compliant       | Yes  |
| Nominal lifetime (nom.) | 70000 h  |
| Switching cycle         | 200,000X   |

| Light Technical                     |                           |
|-------------------------------------|---------------------------|
| Colour Code                         | 841 [ CCT of 4100K (841)] |
| Beam Angle (Nom)                    | 160 °                     |
| Luminous flux (nom.)                | 3700 lm                   |
| Colour designation                  | Cool White (CW)           |
| Correlated Colour Temperature (Nom) | 4000 K                    |
| Luminous efficacy (rated) (nom.)    | 172.00 lm/W               |
| Colour consistency                  | <6                        |
| Colour rendering index (nom.)       | 83                        |

| Operating and Electrical         |             |
|----------------------------------|-------------|
| Input frequency                  | 50 to 60 Hz |
| Power (Rated) (Nom)              | 21.5 W      |
| Lamp current (max.)              | 111 mA      |
| Lamp current (min.)              | 83 mA       |
| Starting time (nom.)             | 0.5 s       |
| Warm-up time to 60% light (nom.) | 0.5 s       |
| Power factor (nom.)              | 0.9         |
| Voltage (Nom)                    | 220-240 V   |

| Temperature      |        |
|------------------|--------|
| T-ambient (max.) | 35 °C  |
| T-ambient (min.) | -20 °C |
| T storage (max.) | 65 °C  |
| T storage (min.) | -40 °C |

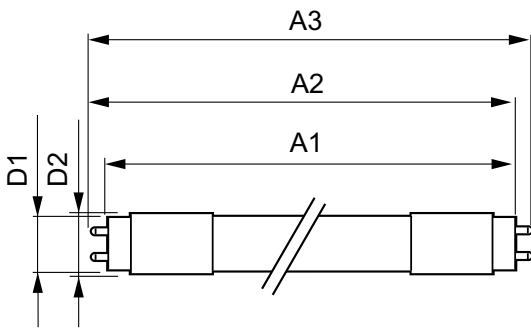
|  |      |
|--|------|
| LLMF at end of nominal lifetime (nom.) | 70 % |
|--|------|

# MASTER LEDtube EM/Mains

|                                 |  |
|---------------------------------|--|
| T-Case maximum (nom.)           | 60 °C  |
| <b>Controls and Dimming</b>     |  |
| Dimmable                        | No   |
| <b>Mechanical and Housing</b>   |  |
| Bulb material                   | Plastic  |
| Product length                  | 1500 mm  |
| <b>Approval and Application</b> |  |
| Energy efficiency label (EEL)   | A++  |
| Energy-saving product           | Yes  |
| Approval marks                  | CE marking RoHS compliance KEMA Keur certificate |

|                                    |                                       |
|------------------------------------|---------------------------------------|
| Energy consumption kWh/1,000 hours | 22 kWh                                |
| <b>Product Data</b>                |                                       |
| Full product code                  | 871869673154300                       |
| Order product name                 | MASTER LEDtube 1500mm UE 21.5W 840 T8 |
| EAN/UPC – product                  | 8718696731543                         |
| Order code                         | 73154300                              |
| SAP numerator – quantity per pack  | 1                                     |
| Numerator – packs per outer box    | 10                                    |
| SAP material                       | 929001377002                          |
| SAP net weight (piece)             | 0.270 kg                              |

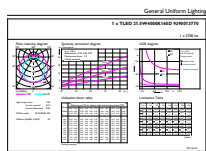
## Dimensional drawing



TLED 5ft 21.5-58W 3700lm 4000K G13 ND

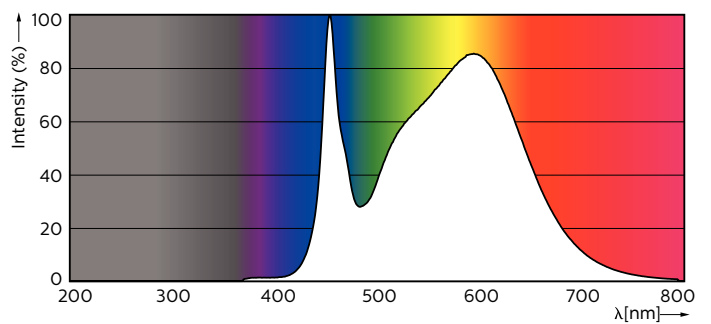
| Product                               | D1      | D2    | A1        | A2        | A3      |
|---------------------------------------|---------|-------|-----------|-----------|---------|
| MASTER LEDtube 1500mm UE 21.5W 840 T8 | 25.8 mm | 28 mm | 1498.8 mm | 1505.9 mm | 1513 mm |

## Photometric data



General Uniform Lighting  
1 x T840 in 1500mm tube (3700lm)  
Page 11

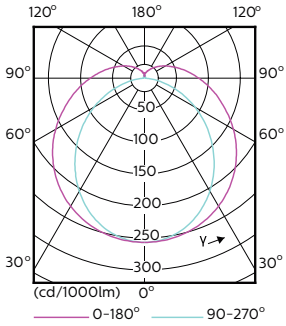
LEDtube 1500mm 22W G13 840 3700lm



LEDtube 1500mm 22W G13 840 3700lm

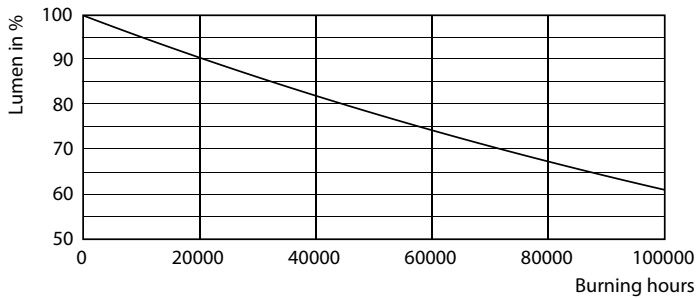
# MASTER LEDtube EM/Mains

## Photometric data

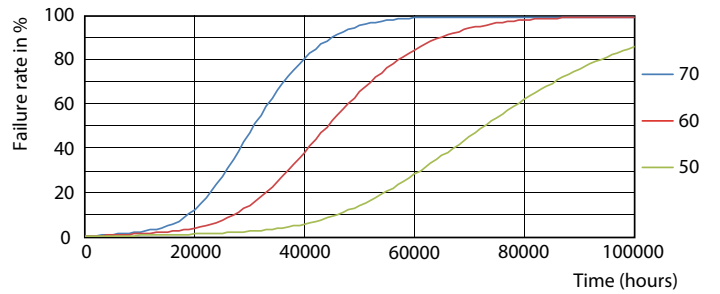


LEDtube 1200mm 15W G13 840 2500lm

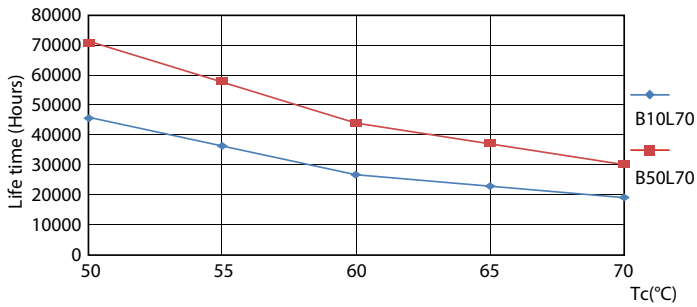
## Lifetime



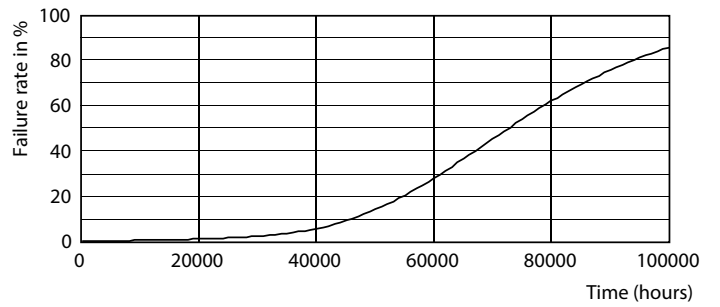
LEDtube G13 ND



LEDtube G13 ND FailureRate



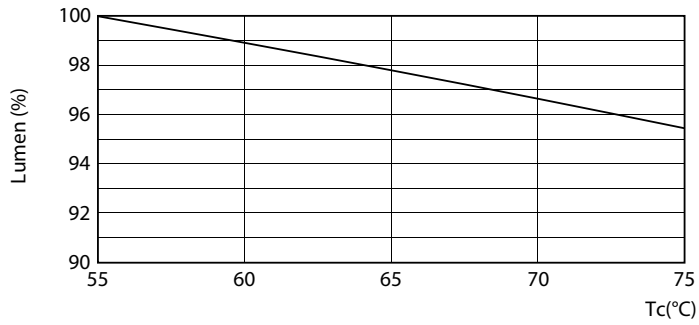
LEDtube G13 ND LifetimeVsTc



LEDtube G13 ND

# MASTER LEDtube EM/Mains

## Lifetime



LEDtube G13 21.5W ND LumenVsTc

