



MASTER LEDtube EM/ Mains

MASTER LEDtube 1200mm UE 14.5W 840 T8

The Philips MASTER LEDtube integrates a LED light source into a traditional fluorescent form factor. Its unique design creates a perfectly uniform visual appearance which cannot be distinguished from traditional fluorescent. For those that are looking for value for money within limited budget and re-lamping efforts for better light effect and lifetime.

Warnings and Safety

• -

Product data

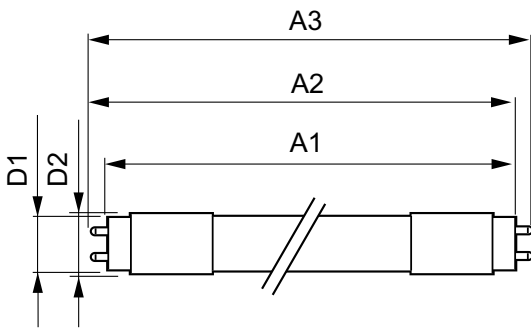
General Information		LLMF at end of nominal lifetime (nom.) 70 %	
Cap base	G13 ROT (Rotating) [Medium Bi-Pin Fluorescent]	Operating and Electrical	
EU RoHS compliant	Yes	Input frequency	50 to 60 Hz
Nominal lifetime (nom.)	70000 h	Power (Rated) (Nom)	14.5 W
Switching cycle	200,000X	Lamp current (max.)	74 mA
Light Technical		Lamp current (min.)	56 mA
Colour Code	841 [CCT of 4100K (841)]	Starting time (nom.)	0.5 s
Beam Angle (Nom)	160 °	Warm-up time to 60% light (nom.)	0.5 s
Luminous flux (nom.)	2500 lm	Power factor (nom.)	0.9
Colour designation	Cool White (CW)	Voltage (Nom)	220-240 V
Correlated Colour Temperature (Nom)	4000 K	Temperature	
Luminous efficacy (rated) (nom.)	172.00 lm/W	T-ambient (max.)	35 °C
Colour consistency	<6	T-ambient (min.)	-20 °C
Colour rendering index (nom.)	83	T storage (max.)	65 °C
		T storage (min.)	-40 °C

MASTER LEDtube EM/Mains

T-Case maximum (nom.)	55 °C
Controls and Dimming	
Dimmable	No
Mechanical and Housing	
Bulb material	Plastic
Product length	1200 mm
Bulb shape	Tube, double-ended
Approval and Application	
Energy-saving product	Yes
Approval marks	CE marking RoHS compliance KEMA Keur certificate

Energy consumption kWh/1,000 hours	15 kWh
Product Data	
Full product code	871869673150500
Order product name	MASTER LEDtube 1200mm UE 14.5W 840 T8
EAN/UPC – product	8718696731505
Order code	73150500
SAP numerator – quantity per pack	1
Numerator – packs per outer box	10
SAP material	929001376802
SAP net weight (piece)	0.235 kg

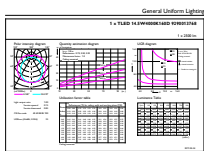
Dimensional drawing



TLED 4ft 14.5-36W 2500lm 4000K G13 ND

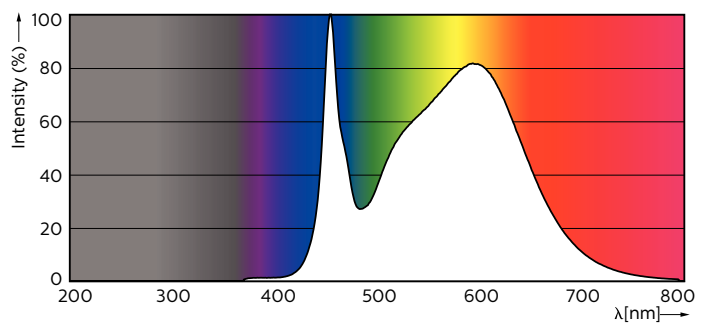
Product	D1	D2	A1	A2	A3
MASTER LEDtube 1200mm UE 14.5W 840 T8	25.8 mm	28 mm	1198.2 mm	1205.3 mm	1212.4 mm

Photometric data



General Uniform Lighting
1 x T840 14.5W LED tube 1200mm
Page 11

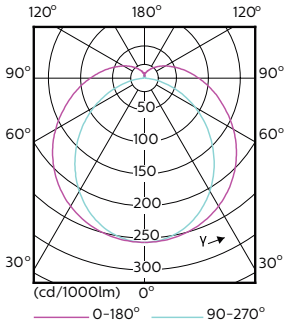
LEDtube 1200mm 15W G13 840 2500lm



LEDtube 1200mm 15W G13 840 2500lm

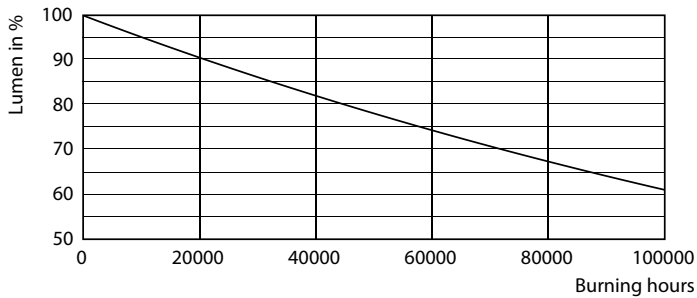
MASTER LEDtube EM/Mains

Photometric data

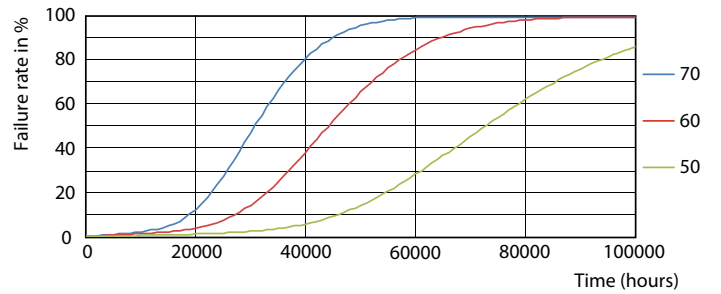


LEDtube 1200mm 15W G13 840 2500lm

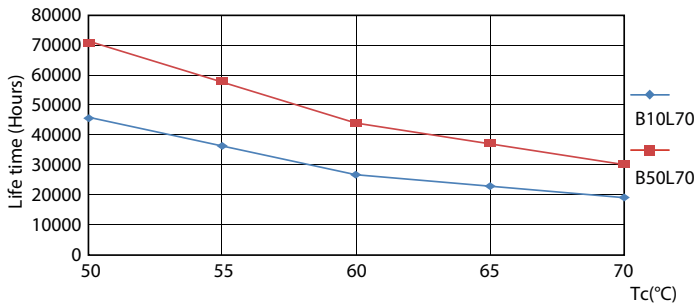
Lifetime



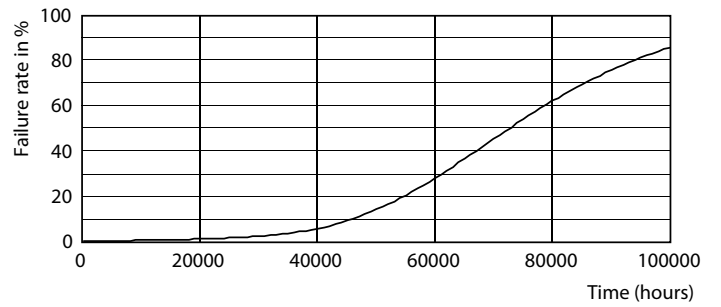
LEDtube G13 ND



LEDtube G13 ND FailureRate



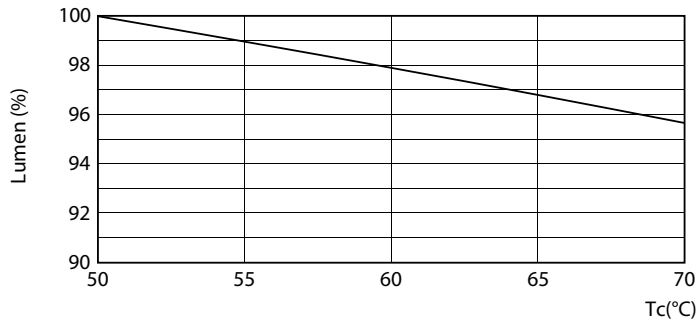
LEDtube G13 ND LifetimeVsTc



LEDtube G13 ND

MASTER LEDtube EM/Mains

Lifetime



LEDtube G13 14.5W ND LumenVsTc

