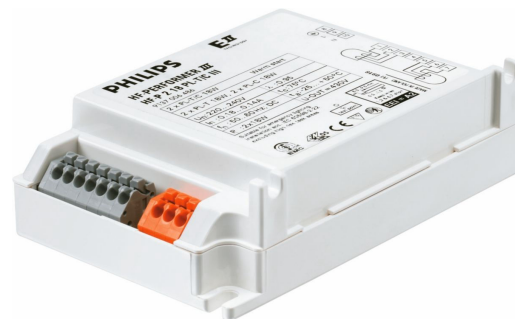


PHILIPS

Lighting



HF-Performer III for PL-T/C lamps

HF-P 1/218 PL-T/C III 220-240V 50/60Hz

HF-Performer III PL-T/C is a sustainable, slim and high-frequency electronic ballast for PL-T and PL-C fluorescent lamps. It is ideal for applications where high energy efficiency is required. The HF-Performer III range has a robust design, meets all relevant international safety and performance standards and is energy efficient (CELMA EEI A2).

Product data

General Information

| | |
|--|--------------|
| Application code | III |
| Lamp type | PL-T/C |
| Number of lamps | 2 piece/unit |
| Number of products on MCB (16 A type B) (nom.) | 28 |
| Automatic restart | Yes |

Operating and Electrical

| | |
|--------------------------------|--------------|
| Input Voltage | 220 to 240 V |
| Input frequency | 50 to 60 Hz |
| Operating frequency (max.) | - kHz |
| Operating frequency (min.) | 42 kHz |
| Operating frequency (nom.) | 45 kHz |
| Ignition method | Warm Start |
| Crest factor (max.) | 1.7 |
| Power factor 100% load (nom.) | 0.95 |
| Ignition time (max.) | 0.40 s |
| Mains voltage performance (AC) | -8% - +6% |
| Mains voltage safety (AC) | -10% - +10% |

| | |
|------------------------------|-------------|
| Earth leakage current (nom.) | 0.5 mA |
| Inrush current width | 0.250 ms |
| Constant wattage deviation | -2%/+2% |
| Ballast factor (nom.) | 1 |
| Power losses (nom.) | 0.68-2.21 W |
| Inrush current peak (max.) | 18 A |
| Efficiency at full load [%] | 87.97 % |

Wiring

| | |
|---|---|
| Connector type input terminals | Insert |
| Cable capacity output wires mutual (nom.) | 100 pF |
| Connector type output terminals | Insert |
| Cable length from device to lamp | 1 m |
| Cable length hot-wiring | 1 m |
| Wire strip length | 8.5-9.5 mm |
| Dual fixture master/slave | Not applicable [Master/Slave oper. not applicable] |
| Input terminal cross section | 0.50-1.50 mm ² |
| Output terminal cross section | 0.50-1.50 mm ² |

HF-Performer III for PL-T/C lamps

| | |
|---|--------|
| Cable capacity output wires to earth (nom.) | 100 pF |
|---|--------|

System characteristics

| | |
|----------------------------|--------------|
| Rated ballast-lamp power | 18 W |
| Rated lamp power on PL-T/C | 2x18/18 W |
| System power on PL-T/C | 33.84/17.9 W |
| Power loss on PL-T/C | 2.64/1.9 W |
| Lamp power on PL-T/C | 31.2/16 W |

Temperature

| | |
|------------------------|--------|
| T-ambient (max.) | 50 °C |
| T-ambient (min.) | -25 °C |
| T storage (max.) | 80 °C |
| T storage (min.) | -40 °C |
| T-case lifetime (nom.) | 75 °C |
| T-Case maximum (max.) | 75 °C |
| T-Ignition (max.) | 50 °C |
| T-Ignition (min.) | -25 °C |

Mechanical and Housing

| | |
|---------|-------------|
| Housing | S 103x67x30 |
|---------|-------------|

Emergency Operation

| | |
|---------------------------------------|--------------|
| Nominal light output after 60 seconds | 100% of EBLF |
| Battery voltage lamp ignition | 198-254 V |
| Normal operating voltage (DC) | 220-240 V |
| Battery voltage lamp operation | 176-254 |
| Battery voltage guaranteed operation | 176-275 V |
| Battery voltage guaranteed ignition | 186-275 V |
| Nominal light output after 5 seconds | 50% of EBLF |

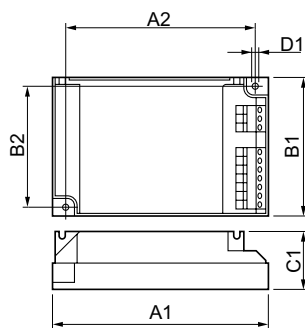
Approval and Application

| | |
|------------------------------------|---|
| Energy efficiency index | A2 BAT |
| IP classification | IP 20 [Ingress Protection 20] |
| EMI 9 kHz ... 30 MHz | EN55015 |
| Safety standard | IEC 61347-2-3 |
| Performance standard | IEC 60929 |
| Quality standard | ISO 9000:2000 |
| Environmental standard | ISO 14001 |
| Harmonic current emission standard | IEC 61000-3-2 |
| EMC immunity standard | IEC 61547 |
| Vibration standard | IEC68-2-6 F c |
| Bumps standard | IEC 68-2-29 Eb |
| Humidity standard | EN 61347-2-3 clause 11 |
| Approval marks | CE marking ENEC certificate VDE-EMV certificate |
| Temperature marking | Yes |
| Emergency standard | IEC 60598-2-22 |
| Humming and noise level | Inaudible |

Product Data

| | |
|-----------------------------------|--------------------------------|
| Full product code | 872790083417800 |
| Order product name | HF-P 1/218 PL-T/C III 220-240V |
| EAN/UPC – product | 8711500881038 |
| Order code | 83417800 |
| SAP numerator – quantity per pack | 1 |
| Numerator – packs per outer box | 12 |
| SAP material | 913700648666 |
| SAP net weight (piece) | 0.130 kg |

Dimensional drawing



HF-P 1/218 PL-T/C III 220-240V 50/60Hz

| Product | D1 | C1 | A1 | A2 | B1 | B2 |
|--------------------------------|--------|---------|----------|---------|---------|---------|
| HF-P 1/218 PL-T/C III 220-240V | 4.2 mm | 30.0 mm | 103.8 mm | 93.5 mm | 67.8 mm | 57.5 mm |

HF-Performer III for PL-T/C lamps

