



# StoreFlux – powerful LED accent lighting that blends perfectly in the store architecture

## StoreFlux gen3 rimless

The StoreFlux gridlight can be equipped with up to four LED modules with a special reflector system to deliver top-quality light that makes your shop and merchandise look great. The combination of multiple LED sources with high lumen packages in one luminaire creates sparkling light effects. StoreFlux offers low maintenance compared with CDM and high efficiency compared to halogen.

### Benefits

- High-quality accent lighting thanks to PerfectAccent reflector's light signature
- Short payback compared with CDM luminaires due to high system efficacy
- Efficient and low-maintenance thanks to LED technology

### Features

- Multiple accent light sources in one luminaire (1, 2, 3 or 4 LED modules)
- High lumen packages: up to 3900 lm per module (up to 3 head version)
- Rim version; rimless variant available; different RAL color combinations possible
- Ease of installation and maintenance (separate installation frame; replaceable LED light engines and reflectors)

### Application

- Retail; fashion
- Hospitality

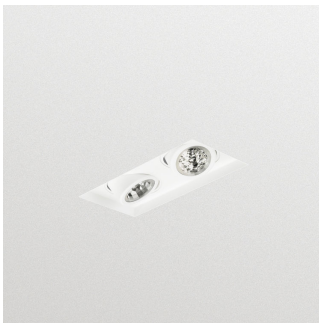
# StoreFlux gen3 rimless

## Specifications

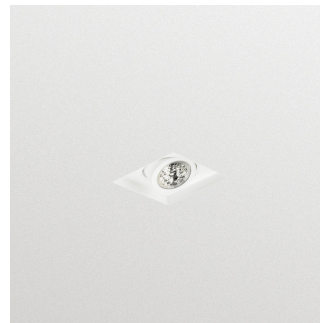
<b>Type</b>	GD611B (rimless, 1 head version)
	GD612B (rimless, 2 head version)
	GD613B (rimless, 3 head version)
	GD614B (rimless, 4 head in a row version)
	GD615B (rimless, 4 head in a square version)
<b>Light source</b>	Non-replaceable LED module
<b>Power (per head)</b>	LED11S: 16.5 W
	LED12S: 12.5 W
	LED20S: 20 W
	LED17S: 16 W
	LED27S: 25 W
	LED39S: 39 W
<b>Beam angle</b>	LED12S/17S/27S/39S: 29 and 35°,
	LED11S/20S: 10°
<b>Luminous flux (at 3000 K)</b>	LED11S: 1100 lm
	LED12S: 1200 lm
	LED20S: 2000 lm
	LED17S: 1700 lm
	LED27S: 2700 lm
	LED39S: 3900 lm
<b>Correlated Color Temperature</b>	2700, 3000 or 4000 K and CrispWhite
<b>Color Rendering Index</b>	80 90 (light color 930) >95 (CRW)
<b>Median useful life L70B50</b>	70,000 hours
<b>Median useful life L80B50</b>	50,000 hours

<b>Median useful life L90B50</b>	25,000 hours
<b>Driver failure rate</b>	1% per 5000 hours
<b>Average ambient temperature</b>	+25 °C
<b>Operating temperature range</b>	+10 to +35 °C
<b>Driver</b>	Separate
<b>Mains voltage</b>	230 or 240 V / 50-60 Hz
<b>Dimming</b>	DALI
<b>Material</b>	Housing: aluminum, steel
	Front glass: acrylic
<b>Color</b>	White (WH-WH)
	Housing, heads and rim can have different color combinations (WH-WH, BK-BK, GR-BK, WH-BK)
<b>Optical cover</b>	Acrylic
<b>Connection</b>	Push-in connector; 3-pole push-in with loop-through (CU3); 5-pole push-in with loop-through (CU5)
<b>Cable options</b>	0.5 m cable with 3-pole Wieland / Adels plug (CW); 0.5 m cable with 3-pole Wieland / Adels plug & lock (CW-L); 1 m cable with external BST14 DALI connector (C1KBST2)
<b>Maintenance</b>	Replaceable light engines and driver
<b>Installation</b>	Directly into the ceiling after installing installation frame
<b>Accessories</b>	Installation frames (ZD51*B CFRM-RML) to be ordered separately
<b>Remarks:</b>	Optical unit tiltable over 30°
	360° rotation of the optical unit

## Versions



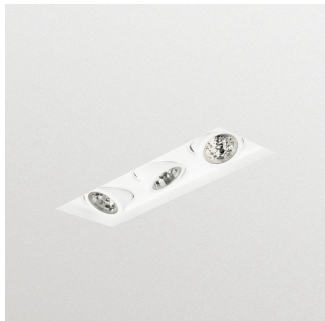
StoreFlux3 - LED Module, system  
flux 1700 lm



StoreFlux3 - LED Module, system  
flux 1200 lm

# StoreFlux gen3 rimless

## Versions



Zapuštěné vícezdrojové  
bezlemové LED svítidlo StoreFlux  
GD613B

## Product details

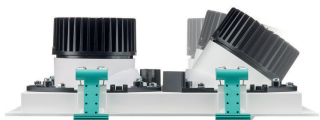
Bottom view excluding drivers



Top view excluding drivers



Side view of rotation system



## Accessories



Installation frame

Ordercode 10026300

# StoreFlux gen3 rimless

## Application Conditions

Ambient temperature range	+10 to +40 °C
Maximum dimming level	Not applicable
Suitable for random switching	No

## Approval and Application

Mech. impact protection code	IK02
Ingress protection code	IP20

## Controls and Dimming

Dimmable	No
----------	----

## Operating and Electrical

Input Voltage	220 to 240 V
---------------	--------------

## General Information

Beam angle of light source	120 °
CE mark	CE mark
Protection class IEC	Safety class II (II)
Optical cover/lens type	ACT
Driver included	Yes
ENEC mark	ENEC mark
Flammability mark	F
Glow-wire test	650/5
Light source replaceable	No
Optic type	MB

## Initial Performance (IEC Compliant)

Initial chromaticity	(0.43, 0.40) SDCM <3
Init. Corr. Colour Temperature	3000 K
Init. Colour rendering index	≥80
Luminous flux tolerance	+/-10%

## Mechanical and Housing

Colour	White and white
--------	-----------------

## General Information

Order Code	Full Product Name	Lamp family code	Number of gear units	Number of light sources	Product family code
88282500	GD612B LED17S/830 PSU-E MB WH-WH	LED17S	2 units	2	GD612B
91064100	GD611B LED17S/830 PSU-E MB WH-WH	LED17S	1 unit	1	GD611B
91066500	GD611B LED27S/830 PSU-E MB WH-WH	LED27S	1 unit	1	GD611B
91073300	GD613B LED17S/830 PSU-E MB WH-WH	LED17S	3 unit	3	GD613B

## Initial Performance (IEC Compliant)

Order Code	Full Product Name	Initial LED luminaire efficacy	Initial luminous flux	Initial input power
88282500	GD612B LED17S/830 PSU-E MB WH-WH	118.05555555555556 lm/W	3400 lm	13.8 W
91064100	GD611B LED17S/830 PSU-E MB WH-WH	118.05555555555556 lm/W	1700 lm	14.4 W

Order Code	Full Product Name	Initial LED luminaire efficacy	Initial luminous flux	Initial input power
91066500	GD611B LED27S/830 PSU-E MB WH-WH	120 lm/W	2700 lm	22.5 W
91073300	GD613B LED17S/830 PSU-E MB WH-WH	118.05555555555556 lm/W	5100 lm	13.8 W

## StoreFlux gen3 rimless

