



ClearFlood Large – The best solution for 1:1 retrofit

ClearFlood Large

ClearFlood Large is designed to meet the requirements of a wide range of floodlighting applications. It also includes all the necessary control features and interfaces to make it future-proof and even more efficient. ClearFlood Large lets you choose the exact number of lumens you need for your application. Incorporating extremely high-efficiency optics and state-of-the-art LEDs, it is a highly competitive solution offering an outstanding lux/euro ratio and energy savings of up to 40% (without the use of additional controls). The wide choice of optics ensures maximum application coverage. ClearFlood Large is easy to install – you simply plug it in and select the best option for your needs. Perfect for replacing conventional technology and enabling intelligent lighting control while retaining the same electrical installation and poles.

Benefits

- Fast payback and low Total Cost of Ownership with energy savings and minimum maintenance costs
- Multiple control options ensure increased efficiency with intelligent lighting
- Combination of lenses and flux options ensures high level of project flexibility

ClearFlood Large

Features

- Designed for 1:1 retrofit up to 1000 W HID
- Wide range of lumen packages between 30 klm and 65 klm
- Gear and PCB easy to replace
- Wide range of control options, such as CityTouch Ready, CLO, DALI, 1-10 V
- LEDs and optics deliver highest level of efficiency
- Components are 100% Philips
- Wide choice of optics to suit all applications: 3x Asymmetrical, 3x Road, 3x Symmetrical, versions with louver (optional)
- Optimized architecture for 4 kV surge (optional 10 kV), IP66 and IK08 protection

Application

- Airports
- Harbors
- Large recreational sports facilities
- Industrial areas
- Roundabouts and motorway junctions

Specifications

| | |
|------------------------------------|--|
| Type | BVP651 |
| Light source | Integral LED-module |
| Power | 252-549 W depending on configuration |
| Luminous flux | 35,000-65,000 lm |
| Luminaire efficacy | Neutral white: 104 to 122 lm/W Warm white: 91 to 108 lm/W |
| Correlated Color | 3000, 4000 or 5700 K |
| Temperature | |
| Color Rendering Index | 70 |
| Useful life L80B10 | >70,000 hours |
| Operating temperature range | -30 to +45 °C |
| Driver | Built-in (self ballasted LED-module) |
| Surge protection | 4 kV (10 kV optional) |
| Power/Data supply | Philips Xitanium 300 W |
| Mains voltage | 220-240 V AC / 50-60 Hz |
| Dimming | Constant light output (CLO) DALI dimming DynaDimmer CityTouch (OLC) |

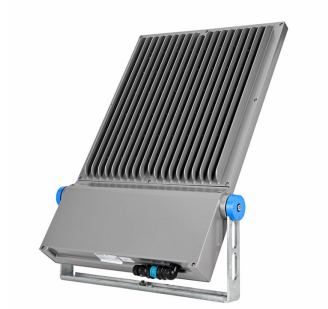
| | |
|------------------------------|--|
| Controls system input | 1-10 V or DALI |
| Optic | Symmetrical or asymmetrical Distribution road comfort, medium, wide or wet road |
| Material | Housing: die-cast aluminum Lenses: PMMA Cover: glass, flat |
| Color | Grey aluminium (RAL9007) |
| Connection | External connector with 5 poles (IP67) |
| Maintenance | From below by opening the housing with a single quick-release clip Serviceable in less than 5 min |
| Installation | Stirrup fixation Max adjustment from the horizontal: -170 to +170° Max vertical aiming: 0 to +360° |
| Accessories | Louver |

ClearFlood Large

Versions



Product details



Universal bracket for mounting / tilting.



Side view



Memory cap.



External connector with 5 poles IP67.



Easy to plug in. No tooling required.

Approval and Application

| | |
|--|--|
| Mech. impact protection code | IK08 |
| Surge Protection (Common/Differential) | Luminaire surge protection level up to 4 kV differential mode and 4 kV common mode |

Controls and Dimming

| | |
|----------|----|
| Dimmable | No |
|----------|----|

General Information

| | |
|--------------------------|-------------------|
| CE mark | CE mark |
| Light source colour | 740 neutral white |
| Optical cover/lens type | FG |
| Driver included | Yes |
| Flammability mark | F |
| Light source replaceable | Yes |
| Number of gear units | 2 units |
| Product Family Code | BVP651 |

Initial Performance (IEC Compliant)

| | |
|--------------------------------|--------|
| Init. Corr. Colour Temperature | 4000 K |
| Init. Colour Rendering Index | 70 |

Light Technical

| | |
|--------------------------------|----|
| Standard tilt angle side entry | 0° |
| Standard tilt angle posttop | 0° |
| Upward light output ratio | 0 |

General Information

| Order Code | Full Product Name | Luminaire light beam spread | Lamp family code | Optic type |
|------------|------------------------------------|-----------------------------|------------------|--------------------------------------|
| 10775800 | BVP651 LED450-4S/740 S ALU PSU | 70° x 21° | LED450 | Symmetrical |
| 10776500 | BVP651 LED450-4S/740 OFA52 ALU PSU | 39° - 11° x 98° | LED450 | Optiflux asymmetrical axis angle 52° |
| 10777200 | BVP651 LED450-4S/740 DM10 ALU PSU | 157° x 111° | LED450 | Distribution medium 10 |
| 10778900 | BVP651 LED450-4S/740 DW10 ALU PSU | 52° - 7° x 151° | LED450 | Distribution wide 10 |
| 10779600 | BVP651 LED450-4S/740 DX10 ALU PSU | 20° - 4° x 150° | LED450 | Distribution extra-wide 10 |
| 10780200 | BVP651 LED450-4S/740 DX50 ALU PSU | 17° - 5° x 132° | LED450 | Distribution extra wide 50 |
| 10781900 | BVP651 LED450-4S/740 DX51 ALU PSU | 14° - 5° x 132° | LED450 | Distribution extra wide 51 |
| 10782600 | BVP651 LED500-4S/740 S ALU PSU | 70° x 21° | LED500 | Symmetrical |
| 10783300 | BVP651 LED500-4S/740 OFA52 ALU PSU | 39° - 11° x 98° | LED500 | Optiflux asymmetrical axis angle 52° |
| 10784000 | BVP651 LED500-4S/740 DM10 ALU PSU | 157° x 111° | LED500 | Distribution medium 10 |
| 10785700 | BVP651 LED500-4S/740 DW10 ALU PSU | 52° - 7° x 151° | LED500 | Distribution wide 10 |
| 10786400 | BVP651 LED500-4S/740 DX10 ALU PSU | 20° - 4° x 150° | LED500 | Distribution extra-wide 10 |
| 10787100 | BVP651 LED500-4S/740 DX50 ALU PSU | 17° - 5° x 132° | LED500 | Distribution extra wide 50 |
| 10788800 | BVP651 LED500-4S/740 DX51 ALU PSU | 14° - 5° x 132° | LED500 | Distribution extra wide 51 |
| 10789500 | BVP651 LED550-4S/740 S ALU PSU | 70° x 21° | LED550 | Symmetrical |
| 10790100 | BVP651 LED550-4S/740 OFA52 ALU PSU | 39° - 11° x 98° | LED550 | Optiflux asymmetrical axis angle 52° |
| 10791800 | BVP651 LED550-4S/740 DM10 ALU PSU | 157° x 111° | LED550 | Distribution medium 10 |
| 10792500 | BVP651 LED550-4S/740 DW10 ALU PSU | 52° - 7° x 151° | LED550 | Distribution wide 10 |
| 10793200 | BVP651 LED550-4S/740 DX10 ALU PSU | 20° - 4° x 150° | LED550 | Distribution extra-wide 10 |
| 10794900 | BVP651 LED550-4S/740 DX50 ALU PSU | 17° - 5° x 132° | LED550 | Distribution extra wide 50 |
| 10795600 | BVP651 LED550-4S/740 DX51 ALU PSU | 14° - 5° x 132° | LED550 | Distribution extra wide 51 |
| 10796300 | BVP651 LED600-4S/740 S ALU PSU | 70° x 21° | LED600 | Symmetrical |
| 10797000 | BVP651 LED600-4S/740 OFA52 ALU PSU | 39° - 11° x 98° | LED600 | Optiflux asymmetrical axis angle 52° |
| 10798700 | BVP651 LED600-4S/740 DM10 ALU PSU | 157° x 111° | LED600 | Distribution medium 10 |

| Order Code | Full Product Name | Luminaire light beam spread | Lamp family code | Optic type |
|------------|---------------------------------------|-----------------------------|------------------|---|
| 10799400 | BVP651 LED600-4S/740 DW10 ALU PSU | 52° - 7° x 151° | LED600 | Distribution wide 10 |
| 10800700 | BVP651 LED600-4S/740 DX10 ALU PSU | 20° - 4° x 150° | LED600 | Distribution extra-wide 10 |
| 10801400 | BVP651 LED600-4S/740 DX50 ALU PSU | 17° - 5° x 132° | LED600 | Distribution extra wide 50 |
| 10802100 | BVP651 LED600-4S/740 DX51 ALU PSU | 14° - 5° x 132° | LED600 | Distribution extra wide 51 |
| 10803800 | BVP651 LED650-4S/740 S ALU PSU | 70° x 21° | LED650 | Symmetrical |
| 10804500 | BVP651 LED650-4S/740 OFA52 ALU PSU | 39° - 11° x 98° | LED650 | Optiflux asymmetrical axis angle 52° |
| 10805200 | BVP651 LED650-4S/740 DM10 ALU PSU | 157° x 111° | LED650 | Distribution medium 10 |
| 10806900 | BVP651 LED650-4S/740 DW10 ALU PSU | 52° - 7° x 151° | LED650 | Distribution wide 10 |
| 10807600 | BVP651 LED650-4S/740 DX10 ALU PSU | 20° - 4° x 150° | LED650 | Distribution extra-wide 10 |
| 10808300 | BVP651 LED650-4S/740 DX50 ALU PSU | 17° - 5° x 132° | LED650 | Distribution extra wide 50 |
| 10809000 | BVP651 LED650-4S/740 DX51 ALU PSU | 14° - 5° x 132° | LED650 | Distribution extra wide 51 |
| 10810600 | BVP651 LED700-4S/740 S ALU PSU | 70° x 21° | LED700 | Symmetrical |
| 10811300 | BVP651 LED700-4S/740 OFA52 ALU PSU | 39° - 11° x 98° | LED700 | Optiflux asymmetrical axis angle 52° |
| 10812000 | BVP651 LED700-4S/740 DM10 ALU PSU | 157° x 111° | LED700 | Distribution medium 10 |
| 10813700 | BVP651 LED700-4S/740 DW10 ALU PSU | 52° - 7° x 151° | LED700 | Distribution wide 10 |
| 10814400 | BVP651 LED700-4S/740 DX10 ALU PSU | 20° - 4° x 150° | LED700 | Distribution extra-wide 10 |
| 10815100 | BVP651 LED700-4S/740 DX50 ALU PSU | 17° - 5° x 132° | LED700 | Distribution extra wide 50 |
| 10816800 | BVP651 LED700-4S/740 DX51 ALU PSU | 14° - 5° x 132° | LED700 | Distribution extra wide 51 |
| 11281300 | BVP651 LED750-4S/740 S ALU PSU | 70° x 21° | LED750 | Symmetrical |
| 11282000 | BVP651 LED750-4S/740 OFA52 ALU PSU | 39° - 11° x 98° | LED750 | Optiflux asymmetrical axis angle 52° |
| 11283700 | BVP651 LED750-4S/740 DM10 ALU PSU | 157° x 111° | LED750 | Distribution medium 10 |
| 11284400 | BVP651 LED750-4S/740 DW10 ALU PSU | 52° - 7° x 151° | LED750 | Distribution wide 10 |
| 11285100 | BVP651 LED750-4S/740 DX10 ALU PSU | 20° - 4° x 150° | LED750 | Distribution extra-wide 10 |
| 11286800 | BVP651 LED750-4S/740 DX50 ALU PSU | 17° - 5° x 132° | LED750 | Distribution extra wide 50 |
| 11287500 | BVP651 LED750-4S/740 DX51 ALU PSU | 14° - 5° x 132° | LED750 | Distribution extra wide 51 |

Initial Performance (IEC Compliant)

| Order Code | Full Product Name | Initial luminous flux | Order Code | Full Product Name | Initial luminous flux |
|------------|------------------------------------|-----------------------|------------|------------------------------------|-----------------------|
| 10775800 | BVP651 LED450-4S/740 S ALU PSU | 39150 lm | 10800700 | BVP651 LED600-4S/740 DX10 ALU PSU | 48600 lm |
| 10776500 | BVP651 LED450-4S/740 OFA52 ALU PSU | 38700 lm | 10801400 | BVP651 LED600-4S/740 DX50 ALU PSU | 49200 lm |
| 10777200 | BVP651 LED450-4S/740 DM10 ALU PSU | 38250 lm | 10802100 | BVP651 LED600-4S/740 DX51 ALU PSU | 30000 lm |
| 10778900 | BVP651 LED450-4S/740 DW10 ALU PSU | 38250 lm | 10803800 | BVP651 LED650-4S/740 S ALU PSU | 56100 lm |
| 10779600 | BVP651 LED450-4S/740 DX10 ALU PSU | 36900 lm | 10804500 | BVP651 LED650-4S/740 OFA52 ALU PSU | 55440 lm |
| 10780200 | BVP651 LED450-4S/740 DX50 ALU PSU | 37350 lm | 10805200 | BVP651 LED650-4S/740 DM10 ALU PSU | 54780 lm |
| 10781900 | BVP651 LED450-4S/740 DX51 ALU PSU | 22500 lm | 10806900 | BVP651 LED650-4S/740 DW10 ALU PSU | 55440 lm |
| 10782600 | BVP651 LED500-4S/740 S ALU PSU | 43000 lm | 10807600 | BVP651 LED650-4S/740 DX10 ALU PSU | 52800 lm |
| 10783300 | BVP651 LED500-4S/740 OFA52 ALU PSU | 42500 lm | 10808300 | BVP651 LED650-4S/740 DX50 ALU PSU | 53460 lm |
| 10784000 | BVP651 LED500-4S/740 DM10 ALU PSU | 42000 lm | 10809000 | BVP651 LED650-4S/740 DX51 ALU PSU | 32340 lm |
| 10785700 | BVP651 LED500-4S/740 DW10 ALU PSU | 42000 lm | 10810600 | BVP651 LED700-4S/740 S ALU PSU | 59500 lm |
| 10786400 | BVP651 LED500-4S/740 DX10 ALU PSU | 40500 lm | 10811300 | BVP651 LED700-4S/740 OFA52 ALU PSU | 58800 lm |
| 10787100 | BVP651 LED500-4S/740 DX50 ALU PSU | 41000 lm | 10812000 | BVP651 LED700-4S/740 DM10 ALU PSU | 58100 lm |
| 10788800 | BVP651 LED500-4S/740 DX51 ALU PSU | 25000 lm | 10813700 | BVP651 LED700-4S/740 DW10 ALU PSU | 58800 lm |
| 10789500 | BVP651 LED550-4S/740 S ALU PSU | 48160 lm | 10814400 | BVP651 LED700-4S/740 DX10 ALU PSU | 56000 lm |
| 10790100 | BVP651 LED550-4S/740 OFA52 ALU PSU | 47600 lm | 10815100 | BVP651 LED700-4S/740 DX50 ALU PSU | 56700 lm |
| 10791800 | BVP651 LED550-4S/740 DM10 ALU PSU | 47040 lm | 10816800 | BVP651 LED700-4S/740 DX51 ALU PSU | 34300 lm |
| 10792500 | BVP651 LED550-4S/740 DW10 ALU PSU | 47040 lm | 11281300 | BVP651 LED750-4S/740 S ALU PSU | 64600 lm |
| 10793200 | BVP651 LED550-4S/740 DX10 ALU PSU | 45360 lm | 11282000 | BVP651 LED750-4S/740 OFA52 ALU PSU | 63840 lm |
| 10794900 | BVP651 LED550-4S/740 DX50 ALU PSU | 45920 lm | 11283700 | BVP651 LED750-4S/740 DM10 ALU PSU | 63080 lm |
| 10795600 | BVP651 LED550-4S/740 DX51 ALU PSU | 28000 lm | 11284400 | BVP651 LED750-4S/740 DW10 ALU PSU | 63840 lm |
| 10796300 | BVP651 LED600-4S/740 S ALU PSU | 51600 lm | 11285100 | BVP651 LED750-4S/740 DX10 ALU PSU | 60800 lm |
| 10797000 | BVP651 LED600-4S/740 OFA52 ALU PSU | 51000 lm | 11286800 | BVP651 LED750-4S/740 DX50 ALU PSU | 61560 lm |
| 10798700 | BVP651 LED600-4S/740 DM10 ALU PSU | 50400 lm | 11287500 | BVP651 LED750-4S/740 DX51 ALU PSU | 37240 lm |
| 10799400 | BVP651 LED600-4S/740 DW10 ALU PSU | 50400 lm | | | |

Mechanical and Housing

| Order Code | Full Product Name | Colour | Order Code | Full Product Name | Colour |
|------------|------------------------------------|--------|------------|------------------------------------|--------|
| 10775800 | BVP651 LED450-4S/740 S ALU PSU | Gray | 10796300 | BVP651 LED600-4S/740 S ALU PSU | Gray |
| 10776500 | BVP651 LED450-4S/740 OFA52 ALU PSU | Gray | 10797000 | BVP651 LED600-4S/740 OFA52 ALU PSU | Gray |
| 10777200 | BVP651 LED450-4S/740 DM10 ALU PSU | Gray | 10798700 | BVP651 LED600-4S/740 DM10 ALU PSU | Gray |
| 10778900 | BVP651 LED450-4S/740 DW10 ALU PSU | Gray | 10799400 | BVP651 LED600-4S/740 DW10 ALU PSU | Gray |
| 10779600 | BVP651 LED450-4S/740 DX10 ALU PSU | Gray | 10800700 | BVP651 LED600-4S/740 DX10 ALU PSU | Gray |
| 10780200 | BVP651 LED450-4S/740 DX50 ALU PSU | Gray | 10801400 | BVP651 LED600-4S/740 DX50 ALU PSU | Gray |
| 10781900 | BVP651 LED450-4S/740 DX51 ALU PSU | Gray | 10802100 | BVP651 LED600-4S/740 DX51 ALU PSU | Gray |
| 10782600 | BVP651 LED500-4S/740 S ALU PSU | Gray | 10803800 | BVP651 LED650-4S/740 S ALU PSU | Gray |
| 10783300 | BVP651 LED500-4S/740 OFA52 ALU PSU | Gray | 10804500 | BVP651 LED650-4S/740 OFA52 ALU PSU | Gray |
| 10784000 | BVP651 LED500-4S/740 DM10 ALU PSU | Gray | 10805200 | BVP651 LED650-4S/740 DM10 ALU PSU | Gray |
| 10785700 | BVP651 LED500-4S/740 DW10 ALU PSU | Gray | 10806900 | BVP651 LED650-4S/740 DW10 ALU PSU | Gray |
| 10786400 | BVP651 LED500-4S/740 DX10 ALU PSU | Gray | 10807600 | BVP651 LED650-4S/740 DX10 ALU PSU | Gray |
| 10787100 | BVP651 LED500-4S/740 DX50 ALU PSU | Gray | 10808300 | BVP651 LED650-4S/740 DX50 ALU PSU | Gray |
| 10788800 | BVP651 LED500-4S/740 DX51 ALU PSU | Gray | 10809000 | BVP651 LED650-4S/740 DX51 ALU PSU | Gray |
| 10789500 | BVP651 LED550-4S/740 S ALU PSU | Gray | 10810600 | BVP651 LED700-4S/740 S ALU PSU | Gray |
| 10790100 | BVP651 LED550-4S/740 OFA52 ALU PSU | Gray | 10811300 | BVP651 LED700-4S/740 OFA52 ALU PSU | Gray |
| 10791800 | BVP651 LED550-4S/740 DM10 ALU PSU | Gray | 10812000 | BVP651 LED700-4S/740 DM10 ALU PSU | Gray |
| 10792500 | BVP651 LED550-4S/740 DW10 ALU PSU | Gray | 10813700 | BVP651 LED700-4S/740 DW10 ALU PSU | Gray |
| 10793200 | BVP651 LED550-4S/740 DX10 ALU PSU | Gray | 10814400 | BVP651 LED700-4S/740 DX10 ALU PSU | Gray |
| 10794900 | BVP651 LED550-4S/740 DX50 ALU PSU | Gray | 10815100 | BVP651 LED700-4S/740 DX50 ALU PSU | Gray |
| 10795600 | BVP651 LED550-4S/740 DX51 ALU PSU | Gray | 10816800 | BVP651 LED700-4S/740 DX51 ALU PSU | Gray |

ClearFlood Large

| Order Code | Full Product Name | Colour |
|------------|------------------------------------|--------|
| 11281300 | BVP651 LED750-4S/740 S ALU PSU | Gray |
| 11282000 | BVP651 LED750-4S/740 OFA52 ALU PSU | Gray |
| 11283700 | BVP651 LED750-4S/740 DM10 ALU PSU | Gray |
| 11284400 | BVP651 LED750-4S/740 DW10 ALU PSU | Gray |

| Order Code | Full Product Name | Colour |
|------------|-----------------------------------|----------|
| 11285100 | BVP651 LED750-4S/740 DX10 ALU PSU | Gray |
| 11286800 | BVP651 LED750-4S/740 DX50 ALU PSU | Aluminum |
| 11287500 | BVP651 LED750-4S/740 DX51 ALU PSU | Gray |

