



# CoreLine Surface-mounted – the clear choice for LED

## CoreLine Surface-mounted

Whether for a new building or renovation of an existing space, customers want lighting solutions that provide quality of light and substantial energy and maintenance savings. The new CoreLine Surface-mounted range of LED products can be used to replace functional luminaires in general lighting applications. The process of selecting, installing and maintaining is so easy – it's a simple switch.

### Benefits

- Enables a simple switch from basic conventional luminaires to LED luminaires
- Energy saving of up to 45% compared to functional TL-D luminaires
- Slim design with a height of less than 40 mm

### Features

- Integrated LED technology
- Slim housing
- Suspension set available as an accessory
- Recessed version also available for use in grid ceilings

### Application

- General lighting

### Warnings and Safety

- The product is IPX0 and as such is not protected against water ingress, so we strongly recommend that the environment in which the luminaire is to be installed is suitably checked
- If the above advice is not taken and the luminaires are subject to water ingress, Philips/Signify cannot guarantee safe failure and product warranty will become void

### Specifications

## CoreLine Surface-mounted

<b>Ambient Temperature</b>	-10 to +40 °C
	0 to +25 °C
<b>Main colour of the luminaire</b>	White
<b>Dimming</b>	No, yes
<b>Driver</b>	Power supply unit with DALI interface (PSD)
	Power supply unit (PSU)

<b>Initial correlated colour temperature</b>	3000 K, 4000 K
<b>Initial input power</b>	22 W / 26 W / 31 W, 25 W / 29 W / 34 W
<b>Initial luminous flux</b>	2800 lm / 3400 lm / 4000 lm, 3100 lm / 3700 lm / 4300 lm
<b>Input frequency</b>	50 or 60 Hz
<b>Input voltage</b>	220 to 240 V
<b>Type</b>	SM136V

### Versions



CORELINE SURFACE GEN3

CORELINE SURFACE GEN3

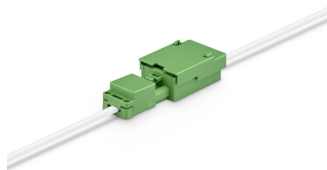
### Product details



CoreLine Surface-mounted  
Mounting clip



CoreLine Recessed connector PSU  
(On/Off)



CoreLine Recessed connector PSU  
(On/Off)



CoreLine Surface-mounted  
Mounting clip

# CoreLine Surface-mounted

## Product details

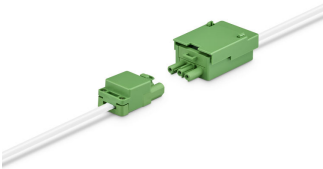
CoreLine Surface-mounted edge



CoreLine Surface-mounted Mounting bracket



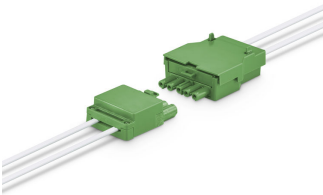
CoreLine Recessed connector PSU (On/Off)



CoreLine Surface-mounted PSU (On/OFF) driver



CoreLine Recessed connector PSD (dali)



CoreLine Surface-mounted backside with PSD (Dali) driver and connector



CoreLine Surface-mounted Backside PSD (dali) driver 20x120



CoreLine Surface-mounted Backside PSU (On/Off) driver 20x150



# CoreLine Surface-mounted

## Product details



CoreLine Surface-mounted  
backside with PSD (Dali) driver  
and Wieland (W5) connector

### Application Conditions

Suitable for random switching Not applicable

### Approval and Application

Mech. impact protection code IK03

Ingress protection code IP20/44

### Operating and Electrical

Input Voltage 220 to 240 V

### General Information

Beam angle of light source - °

CE mark CE mark

Driver included Yes

ENEC mark ENEC mark

Flammability mark F

Glow-wire test 650/30

Light source replaceable No

Number of gear units 1 unit

### Initial Performance (IEC Compliant)

Init. Colour rendering index >80

Luminous flux tolerance +/-10%

### Mechanical and Housing

Colour White

### Application Conditions

Order Code	Full Product Name	Ambient temperature range	Maximum dimming level
97553100	SM136V 31S_37S_43S/840 PSUW20L120NOCELB3	0 to +25 °C	Not applicable
97554800	SM136V 31S_37S_43S/840 PSD W20L120OCELB3	0 to +25 °C	3%
97557900	SM136V 31S_37S_43S/840 PSD W20L120 OC W5	-10 to +40 °C	3%
97558600	SM136V 31S_37S_43S/840 PSU W20L120 NOCW3	-10 to +40 °C	Not applicable
97559300	SM136V 28S_34S_40S/830 PSU W20L120 NOCW3	-10 to +40 °C	Not applicable
97560900	SM136V 28S_34S_40S/830 PSD W20L120 OC W5	-10 to +40 °C	3%
97561600	SM136V 31S_37S_43S/840 PSU W20L120 OC W3	-10 to +40 °C	Not applicable
97562300	SM136V 31S_37S_43S/840 PSD W20L120 NOCW5	-10 to +40 °C	3%
97565400	SM136V 31S_37S_43S/ 840PSDW20L120OCELB3W5	0 to +25 °C	3%
97566100	SM136V 31S_37S_43S/ 840PSUW20L120OCELB3W3	0 to +25 °C	Not applicable
51230600	SM136V 28S_34S_40S/830 PSU W20L120 NOC	-10 to +40 °C	Not applicable
51231300	SM136V 31S_37S_43S/840 PSU W20L120 NOC	-10 to +40 °C	Not applicable
51232000	SM136V 31S_37S_43S/840 PSU W20L120 OC	-10 to +40 °C	Not applicable
51233700	SM136V 31S_37S_43S/840 PSD W20L120 NOC	-10 to +40 °C	3%
51234400	SM136V 28S_34S_40S/830 PSD W20L120 OC	-10 to +40 °C	3%
51235100	SM136V 31S_37S_43S/840 PSD W20L120 OC	-10 to +40 °C	3%
97555500	SM136V 31S_37S_43S/840 PSD W20L150OCELB3	0 to +25 °C	3%
97556200	SM136V 31S_37S_43S/840 PSUW20L150NOCELB3	0 to +25 °C	Not applicable
51236800	SM136V 28S_34S_40S/830 PSU W20L150 NOC	-10 to +40 °C	Not applicable
51237500	SM136V 31S_37S_43S/840 PSU W20L150 NOC	-10 to +40 °C	Not applicable
51238200	SM136V 31S_37S_43S/840 PSU W20L150 OC	-10 to +40 °C	Not applicable
51239900	SM136V 28S_34S_40S/830 PSD W20L150 OC	-10 to +40 °C	3%
51240500	SM136V 31S_37S_43S/840 PSD W20L150 OC	-10 to +40 °C	3%

## Controls and Dimming

Order Code	Full Product Name	Dimmable	Order Code	Full Product Name	Dimmable
97553100	SM136V 31S_37S_43S/840 PSUW20L120NOCELB3	No	97561600	SM136V 31S_37S_43S/840 PSU W20L120 OC W3	No
97554800	SM136V 31S_37S_43S/840 PSD W20L120OCELB3	Yes	97562300	SM136V 31S_37S_43S/840 PSD W20L120 NOCW5	Yes
97557900	SM136V 31S_37S_43S/840 PSD W20L120 OC W5	Yes	97565400	SM136V 31S_37S_43S/840PSDW20L120OCELB3W5	Yes
97558600	SM136V 31S_37S_43S/840 PSU W20L120 NOCW3	No	97566100	SM136V 31S_37S_43S/840PSUW20L120OCELB3W3	No
97559300	SM136V 28S_34S_40S/830 PSU W20L120 NOCW3	No	51230600	SM136V 28S_34S_40S/830 PSU W20L120 NOC	No
97560900	SM136V 28S_34S_40S/830 PSD W20L120 OC W5	Yes	51231300	SM136V 31S_37S_43S/840 PSU W20L120 NOC	No

## CoreLine Surface-mounted

Order Code	Full Product Name	Dimmable
51232000	SM136V 31S_37S_43S/840 PSU W20L120 OC	No
51233700	SM136V 31S_37S_43S/840 PSD W20L120 NOC	Yes
51234400	SM136V 28S_34S_40S/830 PSD W20L120 OC	Yes
51235100	SM136V 31S_37S_43S/840 PSD W20L120 OC	Yes
97555500	SM136V 31S_37S_43S/840 PSD W20L150OCELB3	Yes
97556200	SM136V 31S_37S_43S/840 PSUW20L150NOCELB3	No

Order Code	Full Product Name	Dimmable
51236800	SM136V 28S_34S_40S/830 PSU W20L150 NOC	No
51237500	SM136V 31S_37S_43S/840 PSU W20L150 NOC	No
51238200	SM136V 31S_37S_43S/840 PSU W20L150 OC	No
51239900	SM136V 28S_34S_40S/830 PSD W20L150 OC	Yes
51240500	SM136V 31S_37S_43S/840 PSD W20L150 OC	Yes

### General Information

Order Code	Full Product Name	Protection class IEC	Optic type	Product family code
97553100	SM136V 31S_37S_43S/840 PSUW20L120NOCELB3	Safety class I (I)	100	SM136V
97554800	SM136V 31S_37S_43S/840 PSD W20L120OCELB3	Safety class II (II)	Beam angle 84°	SM136V
97557900	SM136V 31S_37S_43S/840 PSD W20L120 OC W5	Safety class II (II)	Beam angle 84°	SM136V
97558600	SM136V 31S_37S_43S/840 PSU W20L120 NOCW3	Safety class I (I)	100	SM136V
97559300	SM136V 28S_34S_40S/830 PSU W20L120 NOCW3	Safety class I (I)	100	SM136V
97560900	SM136V 28S_34S_40S/830 PSD W20L120 OC W5	Safety class II (II)	Beam angle 84°	SM136V
97561600	SM136V 31S_37S_43S/840 PSU W20L120 OC W3	Safety class I (I)	Beam angle 84°	SM136V
97562300	SM136V 31S_37S_43S/840 PSD W20L120 NOCW5	Safety class II (II)	100	SM136V
97565400	SM136V 31S_37S_43S/840PSDW20L120OCELB3W5	Safety class II (II)	Beam angle 84°	SM136V
97566100	SM136V 31S_37S_43S/840PSUW20L120OCELB3W3	Safety class I (I)	Beam angle 84°	SM136V
51230600	SM136V 28S_34S_40S/830 PSU W20L120 NOC	Safety class I (I)	100	-
51231300	SM136V 31S_37S_43S/840 PSU W20L120 NOC	Safety class I (I)	100	-

Order Code	Full Product Name	Protection class IEC	Optic type	Product family code
51232000	SM136V 31S_37S_43S/840 PSU W20L120 OC	Safety class I (I)	Beam angle 84°	-
51233700	SM136V 31S_37S_43S/840 PSD W20L120 NOC	Safety class II (II)	100	-
51234400	SM136V 28S_34S_40S/830 PSD W20L120 OC	Safety class II (II)	Beam angle 84°	-
51235100	SM136V 31S_37S_43S/840 PSD W20L120 OC	Safety class II (II)	Beam angle 84°	-
97555500	SM136V 31S_37S_43S/840 PSD W20L150OCELB3	Safety class II (II)	Beam angle 84°	SM136V
97556200	SM136V 31S_37S_43S/840 PSUW20L150NOCELB3	Safety class I (I)	100	SM136V
51236800	SM136V 28S_34S_40S/830 PSU W20L150 NOC	Safety class I (I)	100	-
51237500	SM136V 31S_37S_43S/840 PSU W20L150 NOC	Safety class I (I)	100	-
51238200	SM136V 31S_37S_43S/840 PSU W20L150 OC	Safety class I (I)	Beam angle 84°	-
51239900	SM136V 28S_34S_40S/830 PSD W20L150 OC	Safety class II (II)	Beam angle 84°	-
51240500	SM136V 31S_37S_43S/840 PSD W20L150 OC	Safety class II (II)	Beam angle 84°	-

### Initial Performance (IEC Compliant) (1/2)

## CoreLine Surface-mounted

Order Code	Full Product Name	Initial chromaticity	Init. Corr. Colour Temperature	Initial LED luminaire efficacy	Initial luminous flux	Order Code	Full Product Name	Initial chromaticity	Init. Corr. Colour Temperature	Initial LED luminaire efficacy	Initial luminous flux
97553100	SM136V 31S_37S_43S/840 PSUW20L120NOCELB3	(0.38, 0.38)	4000 K	126 lm/W	3100, 3700, 4300 lm	51232000	SM136V 31S_37S_43S/840 PSU W20L120 OC	(0.38, 0.38)	4000 K	140 lm/W	3100, 3700, 4300 lm
97554800	SM136V 31S_37S_43S/840 PSD W20L120OCELB3	(0.38, 0.38)	4000 K	126 lm/W	3100, 3700, 4300 lm	51233700	SM136V 31S_37S_43S/840 PSD W20L120 NOC	(0.38, 0.38)	4000 K	140 lm/W	3100, 3700, 4300 lm
97557900	SM136V 31S_37S_43S/840 PSD W20L120 OC W5	(0.38, 0.38)	4000 K	140 lm/W	3100, 3700, 4300 lm	51234400	SM136V 28S_34S_40S/830 PSD W20L120 OC	(0.43, 0.40)	3000 K	130 lm/W	2800, 3400, 4000 lm
97558600	SM136V 31S_37S_43S/840 PSU W20L120 NOCW3	(0.38, 0.38)	4000 K	140 lm/W	3100, 3700, 4300 lm	51235100	SM136V 31S_37S_43S/840 PSD W20L120 OC	(0.38, 0.38)	4000 K	140 lm/W	3100, 3700, 4300 lm
97559300	SM136V 28S_34S_40S/830 PSU W20L120 NOCW3	(0.43, 0.40)	3000 K	130 lm/W	2800, 3400, 4000 lm	97555500	SM136V 31S_37S_43S/840 PSD W20L150OCELB3	(0.38, 0.38)	4000 K	126 lm/W	3100, 3700, 4300 lm
97560900	SM136V 28S_34S_40S/830 PSD W20L120 OC W5	(0.43, 0.40)	3000 K	130 lm/W	2800, 3400, 4000 lm	97556200	SM136V 31S_37S_43S/840 PSUW20L150NOCELB3	(0.38, 0.38)	4000 K	126 lm/W	3100, 3700, 4300 lm
97561600	SM136V 31S_37S_43S/840 PSU W20L120 OC W3	(0.38, 0.38)	4000 K	140 lm/W	3100, 3700, 4300 lm	51236800	SM136V 28S_34S_40S/830 PSU W20L150 NOC	(0.43, 0.40)	3000 K	130 lm/W	2800, 3400, 4000 lm
97562300	SM136V 31S_37S_43S/840 PSD W20L120 NOCW5	(0.38, 0.38)	4000 K	140 lm/W	3100, 3700, 4300 lm	51237500	SM136V 31S_37S_43S/840 PSU W20L150 NOC	(0.38, 0.38)	4000 K	140 lm/W	3100, 3700, 4300 lm
97565400	SM136V 31S_37S_43S/840PSDW20L120OCELB3W5	(0.38, 0.38)	4000 K	126 lm/W	3100, 3700, 4300 lm	51238200	SM136V 31S_37S_43S/840 PSU W20L150 OC	(0.38, 0.38)	4000 K	140 lm/W	3100, 3700, 4300 lm
97566100	SM136V 31S_37S_43S/840PSUW20L120OCELB3W3	(0.38, 0.38)	4000 K	126 lm/W	3100, 3700, 4300 lm	51239900	SM136V 28S_34S_40S/830 PSD W20L150 OC	(0.43, 0.40)	3000 K	130 lm/W	2800, 3400, 4000 lm
51230600	SM136V 28S_34S_40S/830 PSU W20L120 NOC	(0.43, 0.40)	3000 K	130 lm/W	2800, 3400, 4000 lm	51240500	SM136V 31S_37S_43S/840 PSD W20L150 OC	(0.38, 0.38)	4000 K	140 lm/W	3100, 3700, 4300 lm
51231300	SM136V 31S_37S_43S/840 PSU W20L120 NOC	(0.38, 0.38)	4000 K	140 lm/W	3100, 3700, 4300 lm						

### Initial Performance (IEC Compliant) (2/2)

Order Code	Full Product Name	Initial input power	Order Code	Full Product Name	Initial input power
97553100	SM136V 31S_37S_43S/840 PSUW20L120NOCELB3	25, 29, 34 W	97566100	SM136V 31S_37S_43S/840PSUW20L120OCELB3W3	25, 29, 34 W
97554800	SM136V 31S_37S_43S/840 PSD W20L120OCELB3	25, 29, 34 W	51230600	SM136V 28S_34S_40S/830 PSU W20L120 NOC	22, 26, 31 W
97557900	SM136V 31S_37S_43S/840 PSD W20L120 OC W5	22, 26, 31 W	51231300	SM136V 31S_37S_43S/840 PSU W20L120 NOC	22, 26, 31 W
97558600	SM136V 31S_37S_43S/840 PSU W20L120 NOCW3	22, 26, 31 W	51232000	SM136V 31S_37S_43S/840 PSU W20L120 OC	22, 26, 31 W
97559300	SM136V 28S_34S_40S/830 PSU W20L120 NOCW3	22, 26, 31 W	51233700	SM136V 31S_37S_43S/840 PSD W20L120 NOC	22, 26, 31 W
97560900	SM136V 28S_34S_40S/830 PSD W20L120 OC W5	22, 26, 31 W	51234400	SM136V 28S_34S_40S/830 PSD W20L120 OC	22, 26, 31 W
97561600	SM136V 31S_37S_43S/840 PSU W20L120 OC W3	22, 26, 31 W	51235100	SM136V 31S_37S_43S/840 PSD W20L120 OC	22, 26, 31 W
97562300	SM136V 31S_37S_43S/840 PSD W20L120 NOCW5	22, 26, 31 W	97555500	SM136V 31S_37S_43S/840 PSD W20L150OCELB3	25, 29, 34 W
97565400	SM136V 31S_37S_43S/840PSDW20L120OCELB3W5	25, 29, 34 W	97556200	SM136V 31S_37S_43S/840 PSUW20L150NOCELB3	25, 29, 34 W

## CoreLine Surface-mounted

Order Code	Full Product Name	Initial input power
51236800	SM136V 28S_34S_40S/830 PSU W20L150 NOC	22, 26, 31 W
51237500	SM136V 31S_37S_43S/840 PSU W20L150 NOC	22, 26, 31 W
51238200	SM136V 31S_37S_43S/840 PSU W20L150 OC	22, 26, 31 W

Order Code	Full Product Name	Initial input power
51239900	SM136V 28S_34S_40S/830 PSD W20L150 OC	22, 26, 31 W
51240500	SM136V 31S_37S_43S/840 PSD W20L150 OC	22, 26, 31 W

